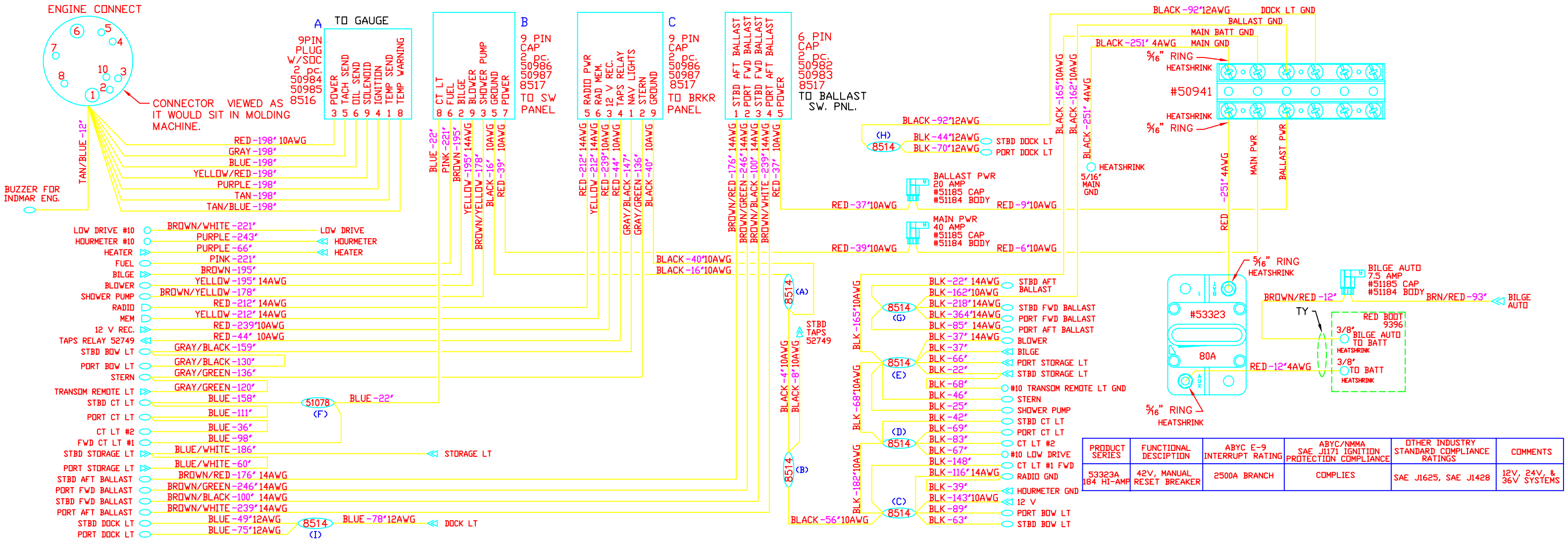
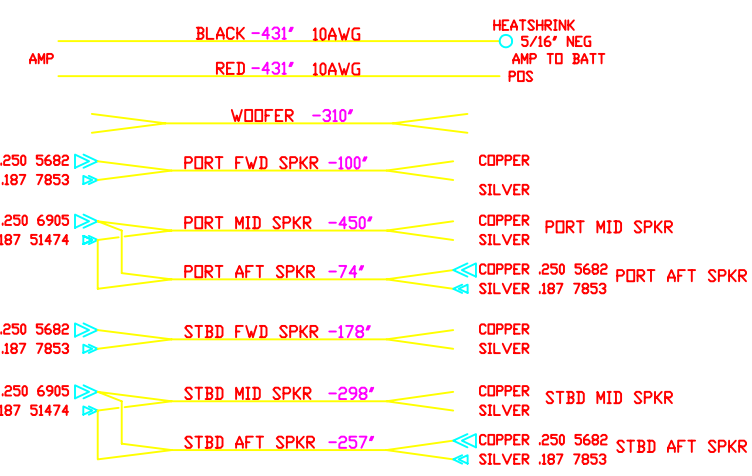


ENGINE CONNECT LEGEND	
PIN#	DESCRIPTION
1	-
2	TACH SNDR GRAY 16AWG 192"
3	TEMP SNDR TAN 16AWG 192"
4	TEMP WARNING TAN/BLUE 16AWG 204"
5	IGNITION PURPLE 16AWG 192"
6	BATTERY POS. RED 10AWG 192"
7	SOLENOID YELLOW/RED 16AWG 192"
8	OIL SNDR BLUE 16AWG 192"
10	BUZZER FOR INDMAR ENG. BLUE/TAN 12"

REVISIONS			
REV	DESCRIPTION	DATE	BY
B	ADD TRANSOM REMOTE LT & HOUR METER LEADS, DELETED GND FROM ENG HARN. TO PREVENT GND LOOP PER EDDY G. AT TIGE	8-7-01	RP
C	REVISED SPKR WIRES AND TERMINALS, REVISED 8 WAY TO 9 PIN PLUG PER RYAN, ADDED 12" TO PORT BOW LT	1-8-02	RP
D	REVISED BREAKER & BILGE AUTO FUSE	1-25-02	RP
E	ADDED AMP LEADS AND MODIFIED WIRE LENGTHS & TERMINALS	4-23-02	RKA
F	ADDED BALLAST LEADS & CONN, 80A BRKR. & BUSS BAR, CHANGED BREAKERS TO AUTO FUSES, & MODIFIED WIRES	4-9-03	RKA
G	ADDED 27" TO LENGTH OF FUEL LEADS	9-8-03	RKA
H	ADDED 6" TO STBD CT LT, STBD AFT SPKR, PORT CT LT, PORT AFT SPKR, CT LT, & MAIN HARNESS BETWEEN STERN LT & HEATER, SHORTENED CT LT #2 BY 58", ADDED CONDUIT TO PORT MID SPKR, ADDED 20" TO STBD BOW, & ADDED DOCK LTS	2-23-04	RKA
J	CHANGED CONDUIT TO GRAY, ADD 12" TAN/BLUE FOR INDMAR ENGINE BUZZER, ADDED 12" TO BOW LIGHT WIRE AND 24" FORWARD COURTESY LIGHT, RUN CT LT THROUGH B CONNECTOR AND DELETED FRESHWATER AND ACC 1, ADD 24" TO CT LT 2	10-15-04	JTK
K	ADD SHOWER PUMP BACK IN PER CURT	1-27-05	KMH



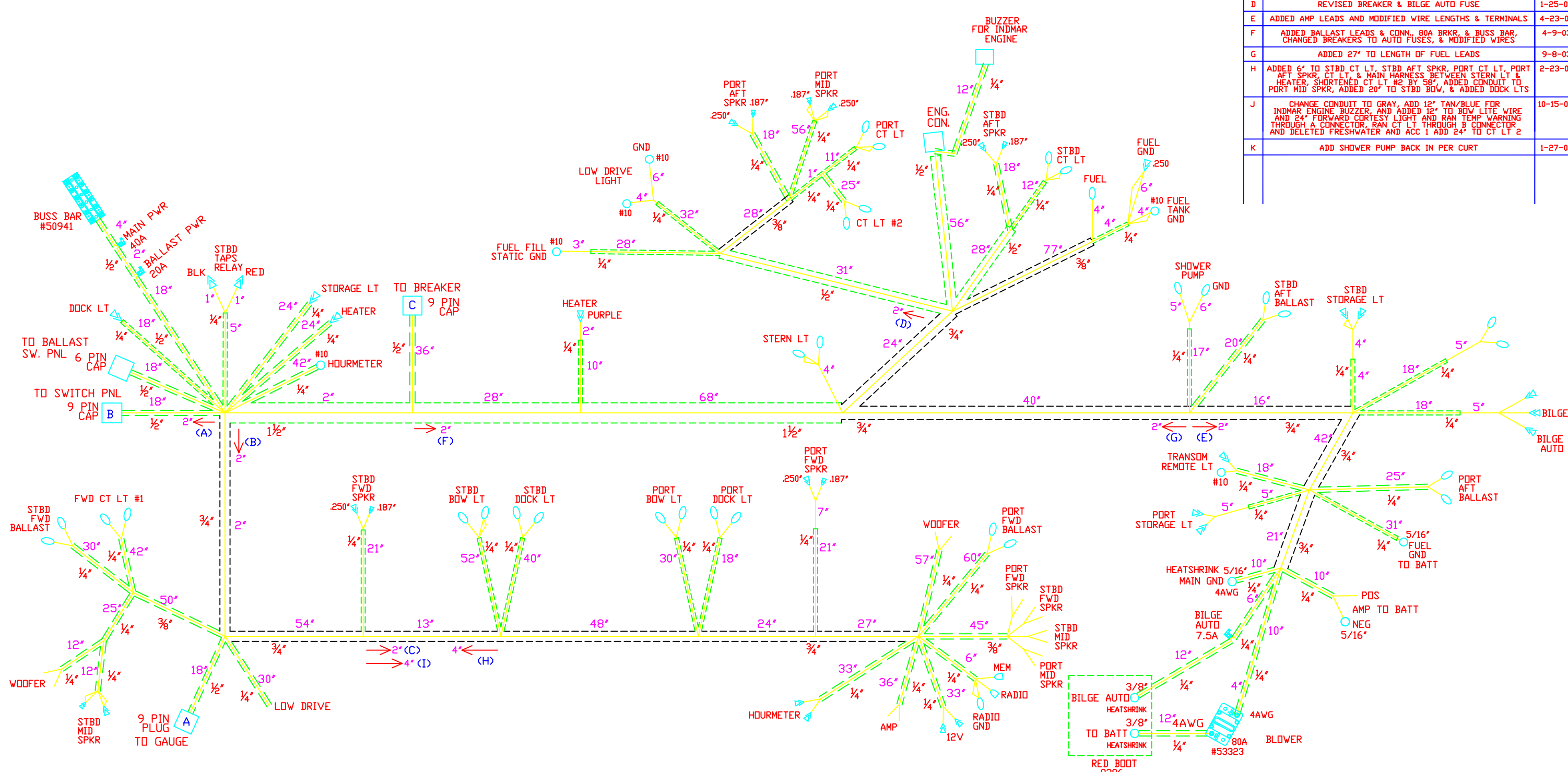
COMPONENT	WIRE COLOR & GAUGE	LENGTH	TERMINAL
LOW DRIVE #10	BROWN/WHITE	-221"	LOW DRIVE
HOURLMETER #10	PURPLE	-243"	HOURLMETER
HEATER	PURPLE	-66"	HEATER
FUEL	PINK	-221"	FUEL
BILGE	BROWN	-195"	BILGE
BLOWER	YELLOW	-195"	14AWG
SHOWER PUMP	BROWN/YELLOW	-178"	
RADIO	RED	-212"	14AWG
MEM	YELLOW	-212"	14AWG
12 V REC.	RED	-239"	10AWG
TAPS RELAY 52749	RED	-44"	10AWG
STBD BOW LT	GRAY/BLACK	-159"	
PORT BOW LT	GRAY/BLACK	-130"	
STERN	GRAY/GREEN	-136"	
TRANSOM REMOTE LT	GRAY/GREEN	-120"	
STBD CT LT	BLUE	-158"	
PORT CT LT	BLUE	-111"	
CT LT #2	BLUE	-36"	
FWD CT LT #1	BLUE	-98"	
STBD STORAGE LT	BLUE/WHITE	-186"	STORAGE LT
PORT STORAGE LT	BLUE/WHITE	-60"	
STBD AFT BALLAST	BROWN/RED	-176"	14AWG
PORT FWD BALLAST	BROWN/GREEN	-246"	14AWG
STBD FWD BALLAST	BROWN/BLACK	-100"	14AWG
PORT AFT BALLAST	BROWN/WHITE	-239"	14AWG
STBD DOCK LT	BLUE	-49"	12AWG
PORT DOCK LT	BLUE	-75"	12AWG



PRODUCT SERIES	FUNCTIONAL DESCRIPTION	ABYC E-9 INTERRUPT RATING	ABYC/NMMA SAE J1171 IGNITION PROTECTION COMPLIANCE	OTHER INDUSTRY STANDARD COMPLIANCE RATINGS	COMMENTS
53323A 184 HI-AMP	42V, MANUAL RESET BREAKER	2500A BRANCH	COMPLIES	SAE J1625, SAE J1428	12V, 24V, & 36V SYSTEMS

UNLESS OTHERWISE SPECIFIED DIMENSIONS ARE IN INCHES		PROJECT		UNIFORCE TECHNOLOGIES	
TOLERANCES ARE:	ANGLES	TIGE	DATE	NORTH LITTLE ROCK, AR (501) 945-3283	
DECIMALS .001	± 1°	APPROVALS	7-24-01	HARN, ACC 20 V, N BOAT	
XX ± .03		DRAWN RP			
XXX ± .010		CHECKED -		SIZE D	FILE NAME 36550SH1
		ENGINEER -		DWG NO. 36550	REV K
APPLICATION	DO NOT SCALE DRAWING	ISSUED KMH	2-3-05	SCALE NTS	SHEET 1 OF 2

REVISIONS			
REV	DESCRIPTION	DATE	BY
B	ADD TRANSOM REMOTE LT & HOUR METER LEADS, DELETED GND FROM ENG HARN. TO PREVENT GND LOOP PER EDDY G. AT TIGE	8-7-01	RP
C	REVISED SPKR WIRES AND TERMINALS, REVISED 8 WAY TO 9 PIN PLUG PER RYAN, ADDED 12" TO PORT BOW LT	1-8-02	RP
D	REVISED BREAKER & BILGE AUTO FUSE	1-25-02	RP
E	ADDED AMP LEADS AND MODIFIED WIRE LENGTHS & TERMINALS	4-23-02	RKA
F	ADDED BALLAST LEADS & CONN, 80A BRKR, & BUSS BAR, CHANGED BREAKERS TO AUTO FUSES, & MODIFIED WIRES	4-9-03	RKA
G	ADDED 27" TO LENGTH OF FUEL LEADS	9-8-03	RKA
H	ADDED 6" TO STBD CT LT, STBD AFT SPKR, PORT CT LT, PORT AFT SPKR, CT LT, & MAIN HARNESS BETWEEN STERN LT & HEATER, SHORTENED CT LT #2 BY 58", ADDED CONDUIT TO PORT MID SPKR, ADDED 20" TO STBD BOW, & ADDED DOCK LTS	2-23-04	RKA
J	CHANGE CONDUIT TO GRAY, ADD 12" TAN/BLUE FOR INDMAR ENGINE BUZZER, AND ADDED 12" TO BOW LITE WIRE AND 24" FORWARD CORTESY LIGHT AND RAN TEMP WARNING THROUGH A CONNECTOR, RAN CT LT THROUGH B CONNECTOR AND DELETED FRESHWATER AND ACC 1 ADD 24" TO CT LT 2	10-15-04	JTK
K	ADD SHOWER PUMP BACK IN PER CURT	1-27-05	KMH



LABEL ALL CONNECTORS W/MARKER

CONDUIT FLAME RETARDANT

SPOT TAPE

NOTE: PUT TAN TAPE #52135 WHERE GND SPLICES ARE

UNLESS OTHERWISE SPECIFIED DIMENSIONS ARE IN INCHES		PROJECT		UNIFORCE TECHNOLOGIES	
TOLERANCES ARE: DECIMALS ± .03 XX ± .03 XXX ± .010	ANGLES ± 1°	TIGE		NORTH LITTLE ROCK, AR (501) 945-3283	
MATERIAL		APPROVALS	DATE	HARN, ACC 20 V, N BOAT	
		DRAWN RP	7-24-01	SIZE D	FILE NAME 36550SH2
		CHECKED		ENGINEER	DWG NO. 36550
		ISSUED KMH	2-3-05	SCALE NTS	REV K
APPLICATION	DO NOT SCALE DRAWING				SHEET 2 OF 2