

MINN-KOTA®



i▶Pilot® **LINK**

**INTEGRATED WIRELESS GPS TROLLING SYSTEM
USER MANUAL**

<https://www.boat-manuals.com/>

TABLE OF CONTENTS

Introduction.....	3
Warranty and Warnings	4-5
Installation	6-25
Parts List.....	6-7
Preparing for Installation	8
Installation of i-Pilot Link	9-25
Getting Started.....	26-37
Knowing Your Remote	26-27
Settings Menu.....	28-31
Controls Menu	32
Remote Battery.....	33
Controller Operations	33-35
System Startup	35
Software Updates	36-37
i-Pilot Setup	38-41
Manual Control.....	42-43
GPS Motor Control	44-83
Spot-Lock.....	48-53
Waypoints.....	54-57
iTracks	58-63
BackTrack	64-65
Follow The Contour.....	66-69
Route Navigation.....	70-72
AutoPilot /Advanced AutoPilot	73-78
Cruise Control	79
Data Management	80-83
Frequently Asked Questions.....	84-85
Troubleshooting	86-87
Glossary.....	88
Compliance Statements.....	89
Notes.....	90-91

INTRODUCTION

Overview

Thank you for purchasing the Minn Kota i-Pilot® Link™. This revolutionary boat control system enables your Minn Kota® trolling motor and your Humminbird® Fishfinder to communicate with each other, delivering unprecedented levels of automatic navigation. Find, store, and revisit your most productive fishing spots and tracks, taking control of it all from either the i-Pilot Link wireless remote control or directly from the Humminbird Fishfinder. Add an i-Pilot compatible LakeMaster® digital map card and unlock the ability to automatically follow depth contours for even higher levels of boat control. All with GPS accuracy so you spend less time positioning your boat and more time catching fish.

This i-Pilot Link Owner's Manual is divided into four main sections: Installation, Getting Started, Manual Control, and GPS Motor Control. A waterproof and easy-to-read Quick Reference Guide is included as a supplement to the User Manual.

A French version of the manual is available online at minnkotamotors.com

Une version français du manuel est disponible en ligne à minnkotamotors.com

Safety and Cautions while using Link

You are responsible for the safe and prudent operation of your vessel. We have designed i-Pilot Link to be an accurate and reliable tool that will enhance boat operation and improve your ability to catch fish. This product does not relieve you from the responsibility for safe operation of your boat. You must avoid hazards to navigation and always maintain a permanent watch so you can respond to situations as they develop. You must always be prepared to regain manual control of your boat. Learn to operate your i-Pilot Link in an area free from hazards and obstacles.

Warranty and Registration

To receive all the benefits of your product warranty please fill out and mail the warranty registration card. You may also register your product online at minnkotamotors.com.

Correctly installing i-Pilot Link on a Minn Kota trolling motor will not void the original motor warranty or the warranty of any previously installed accessories. Installing i-Pilot Link will not extend the warranty of any Minn Kota product it is being installed into or in conjunction with.

TRADEMARKS

Minn Kota®, Riptide®, i-Pilot®, AutoPilot™, CoPilot™, Link™, PowerDrive™, Terrova™ are trademarked by or registered trademarks of Johnson Outdoors Marine Electronics, Inc.

LIMITED TWO-YEAR WARRANTY ON ENTIRE I-PILOT LINK PRODUCT:

Johnson Outdoors Inc. warrants to the original purchaser that the purchaser's entire i-Pilot Link System® accessory is free from defects in materials and workmanship appearing within two (2) years after the date of purchase. Johnson Outdoors Inc. will, at its option, either repair or replace, free of charge, any parts found to be defective during the term of this warranty. Such repair or replacement shall be the sole and exclusive liability of Johnson Outdoors Inc. and the sole and exclusive remedy of the purchaser for breach of this warranty.

These limited warranties do not apply to i-Pilot Link Systems used commercially, nor do they cover normal wear and tear, blemishes that do not affect the operation, or damage caused by accidents, abuse, alteration, modification, misuse or improper care or maintenance. **DAMAGE CAUSED BY THE USE OF OTHER REPLACEMENT PARTS NOT MEETING THE DESIGN SPECIFICATIONS OF THE ORIGINAL PARTS WILL NOT BE COVERED BY THIS LIMITED WARRANTY.** The cost of normal maintenance or replacement parts that are not defective are the responsibility of the purchaser.

To obtain warranty service in the U.S., the part believed to be defective and proof of original purchase (including the date of purchase) must be presented to a Minn Kota Authorized Service Center or to Minn Kota's factory service center in Mankato, MN. Any charges incurred for service calls, transportation or shipping/freight to/from the Minn Kota Authorized Service Center or factory, labor to haul out, remove, re-install or re-rig products removed for warranty service, or any other similar items are the sole and exclusive responsibility of the purchaser. i-Pilot Link systems purchased outside of the U.S. (or parts of such systems) must be returned prepaid with proof of purchase (including the date of purchase and serial number) to any Authorized Minn Kota Service Center in the country of purchase. Warranty service can be arranged by contacting a Minn Kota Authorized Service Center listed on the enclosed sheet or by contacting the factory at 1-800-227-6433, 1-507-345-4623 or fax 1-800-527-4464. Note: Do not return your i-Pilot Link or parts to your retailer. Your retailer is not authorized to repair or replace them.

THERE ARE NO EXPRESS WARRANTIES OTHER THAN THESE LIMITED WARRANTIES. IN NO EVENT SHALL ANY IMPLIED WARRANTIES, INCLUDING ANY IMPLIED WARRANTIES OF MERCHANTABILITY OR FITNESS FOR PARTICULAR PURPOSE, EXTEND BEYOND TWO YEARS FROM THE DATE OF PURCHASE. IN NO EVENT SHALL JOHNSON OUTDOORS MARINE ELECTRONICS L.L.C. BE LIABLE FOR INCIDENTAL, CONSEQUENTIAL OR SPECIAL DAMAGES.

Some states do not allow limitations on how long an implied warranty lasts or the exclusion or limitation of incidental or consequential damages, so the above limitations and/or exclusions may not apply to you. This warranty gives you specific legal rights, and you may also have other legal rights which vary from state to state.

"WARNING: This product contains chemical(s) known to the state of California to cause cancer and/or reproductive toxicity."

HUMMINBIRD WARRANTY AND REGISTRATION

Please refer to your Humminbird product manual for details.

HUMMINBIRD WARNINGS

WARNING! This device should not be used as a navigational aid to prevent collision, grounding, boat damage, or personal injury. When the boat is moving, water depth may change too quickly to allow time for you to react. Always operate the boat at very slow speeds if you suspect shallow water or submerged objects.

WARNING! The electronic chart in your Humminbird® unit is an aid to navigation designed to facilitate the use of authorized government charts, not to replace them. Only official government charts and notices to mariners contain all of the current information needed for the safety of navigation, and the captain is responsible for their prudent use.

WARNING! Humminbird® is not responsible for the loss of data files (waypoints, routes, tracks, groups, recordings, etc.) that may occur due to direct or indirect damage to the unit's hardware or software. It is important to back up your control head's data files periodically. Data files should also be saved to your PC before restoring the unit's defaults or updating the software. See your Humminbird® online account at humminbird.com and the Waypoint Management Guide on your Humminbird® Manual CD for details.

WARNING! Do not travel at high speed with the unit cover installed. Remove the unit cover before traveling at speeds above 20 mph.

WARNING! Disassembly and repair of this electronic unit should only be performed by authorized service personnel. Any modification of the serial number or attempt to repair the original equipment or accessories by unauthorized individuals will void the warranty.

WARNING! This product contains chemicals known to the State of California to cause cancer and/or reproductive harm.

ATTENTION INTERNATIONAL CUSTOMERS: Products sold in the U.S. are not intended for use in the international market. Humminbird® international units provide international features and are designed to meet country and regional regulations. Languages, maps, time zones, units of measurement, and warranty are examples of features that are customized for Humminbird® international units purchased through our authorized international distributors. To obtain a list of authorized international distributors, please visit our Web site at humminbird.com or contact our Customer Resource Center at (334) 687-6613.

NOTE: The illustrations in this manual may not look the same as your product, but your unit will function in the same way.

NOTE: Some features discussed in this manual require a separate purchase, and some features are only available on international models. Every effort has been made to clearly identify those features. Please read the manual carefully in order to understand the full capabilities of your model.

NOTE: To purchase accessories for your control head, visit our Web site at humminbird.com or contact our Customer Resource Center at 1-800-633-1468.

NOTE: The procedures and features described in this manual are subject to change without notice. This manual was written in English and may have been translated to another language. Humminbird® is not responsible for incorrect translations or discrepancies between documents.

NOTE: Product specifications and features are subject to change without notice.

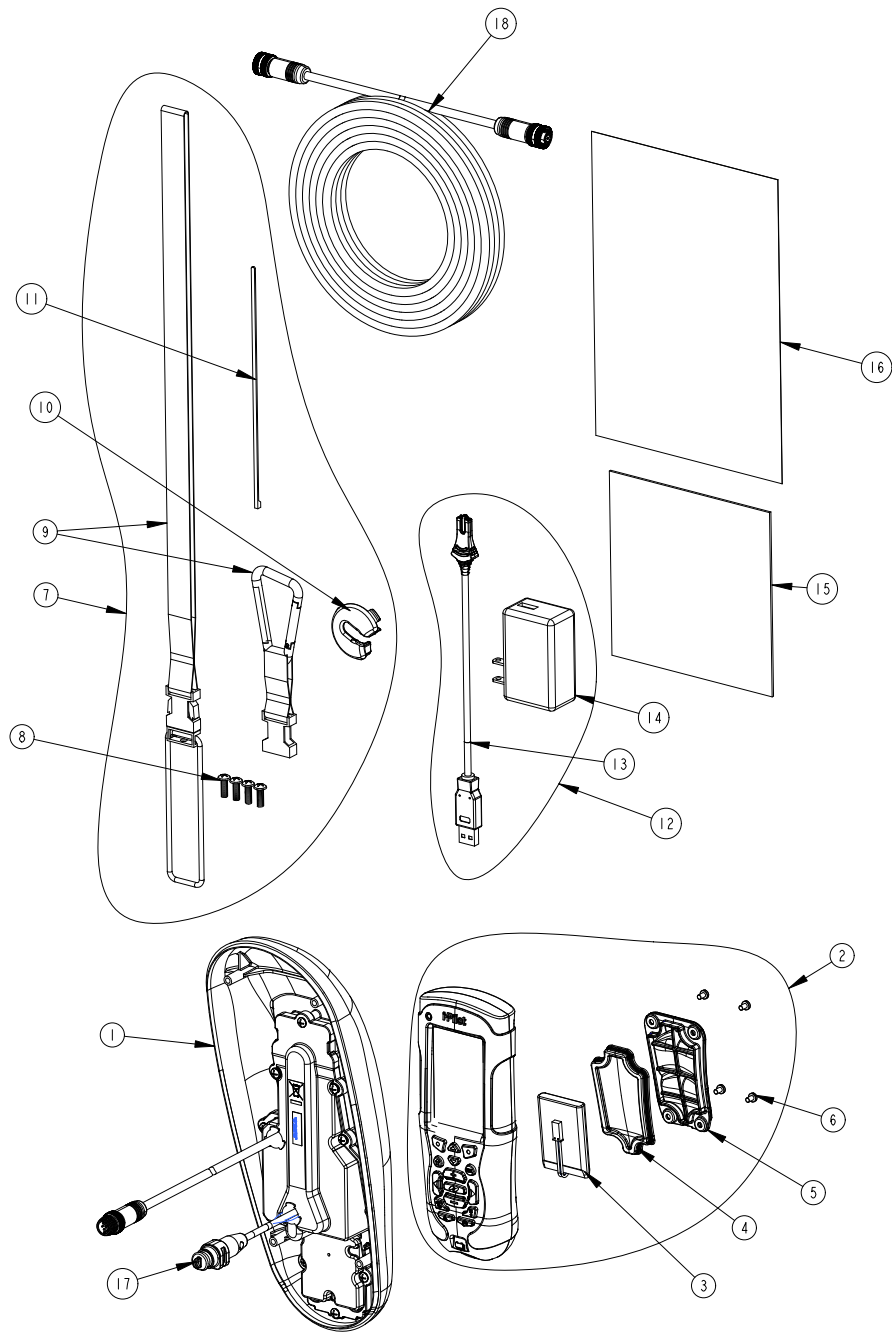
NOTE: Humminbird® verifies maximum stated depth in saltwater conditions, however actual depth performance may vary due to transducer installation, water type, thermal layers, bottom composition and slope.

NOTE: The maximum number of iTracks, Spot-Locks, waypoints, routes, and tracks may vary due to the setup of your Waypoint Management directory. Groups and sub-groups also use storage, and the storage limit is influenced by the complexity of your Waypoint Management directory. See your Waypoint Management Guide for details.

TRADEMARKS

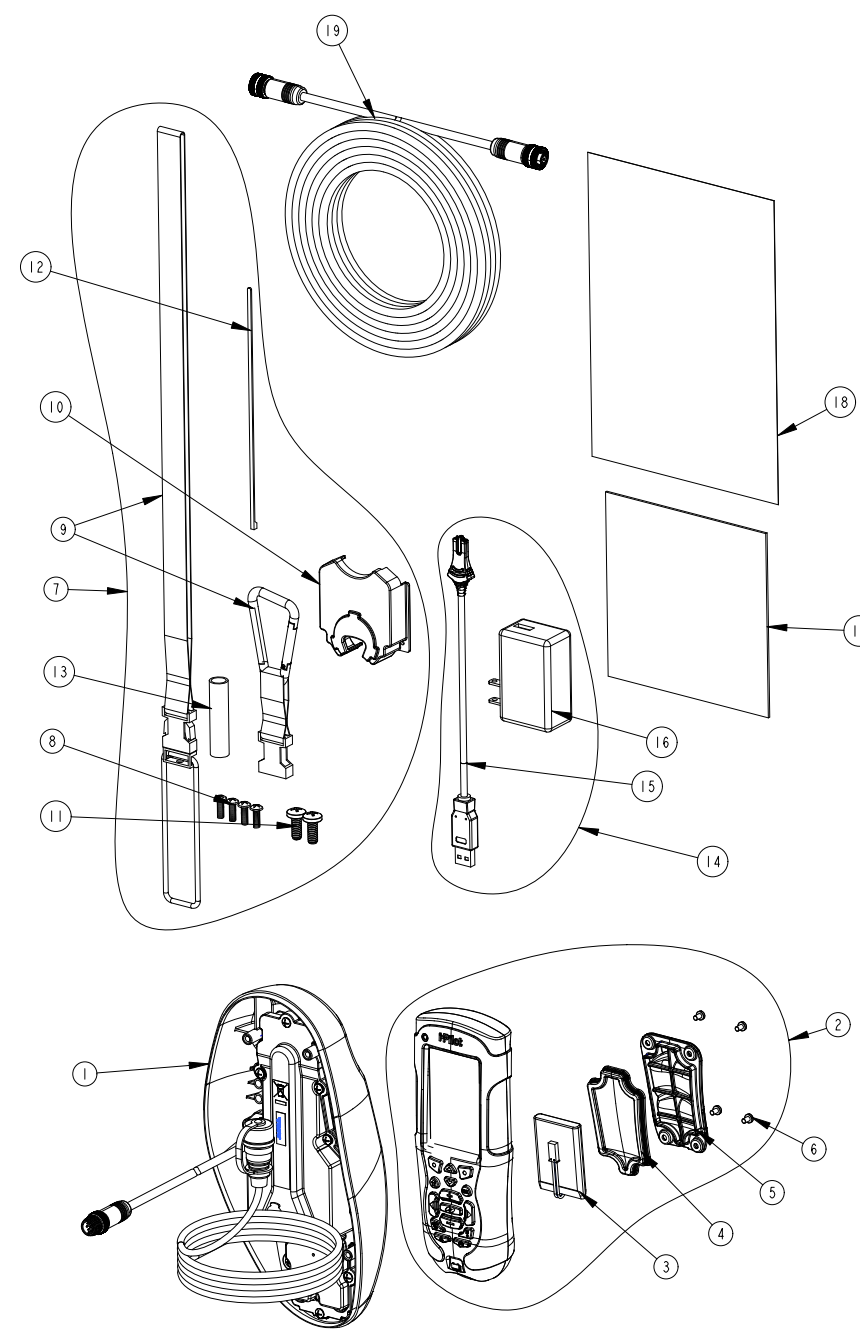
700 Series™, 800 Series™, 900 Series™, 1100 Series™, HumminbirdPC™, Humminbird®, LakeMaster®, Side Imaging®, and X-Press™ Menu are trademarked by or registered trademarks of Johnson Outdoors Marine Electronics, Inc.

PARTS LIST VIEW TERROVA & RIPTIDE ST



ITEM #	PART NUMBER	DESCRIPTION	QTY
TERROVA			
1	2990280	HEAD ASSY,TERROVA, IP2	1
2	2994180	REMOTE ASSY, i-PILOT LINK	1
3	2370712	BATTERY, LIPO PACK	1
4	2374637	O-RING, BATTERY SEAL	1
5	2376421	DOOR, BATTERY	1
6	2383442	SCREW-3MM X .5 PPH MACHINE	4
7	2994907	BAG ASSY, i-PILOT LINK,TRRV	1
8	2372100	SCREW-#8-18 X 5/8 THD* (SS)	4
9	2370817	LANYARD,RMT w/CARABINER	1
10	2224704	INSERT-PLUG, BLK, i-PILOT LINK	1
11	2376312	TIE WRAP,BLACK,UV RESIST. NYLON	5
12	2994909	BAG ASSY, i-PILOT LINK, POWER	1
13	2373241	CABLE, USB REMOTE CHARGER	1
14	2375900	ADAPTER, USB POWER PORT	1
15	2377156	MANUAL-CD, i-PILOT LINK	1
16	2377155	MANUAL QCK REF, i-PILOT LINK	1
17	2320203	CAP-DUST,CONNECTOR,FEMALE	1
18	490389-1	CABLE, ETH (M12-M-M12-F, 30'	1
RIPTIDE ST			
1	2990281	HEAD ASSY, ST, IP2	1
2	2994180	REMOTE ASSY, i-PILOT LINK	1
3	2370712	BATTERY, LIPO PACK	1
4	2374637	O-RING, BATTERY SEAL	1
5	2376421	DOOR, BATTERY	1
6	2383442	SCREW-3MM X .5 PPH MACHINE	4
7	2994907	BAG ASSY, i-PILOT LINK,TRRV	1
8	2372100	SCREW-#8-18 X 5/8 THD* (SS)	4
9	2370817	LANYARD,RMT w/CARABINER	1
10	2224704	INSERT-PLUG, BLK, i-PILOT LINK	1
11	2376312	TIE WRAP,BLACK,UV RESIST. NYLON	5
12	2994909	BAG ASSY, i-PILOT LINK, POWER	1
13	2373241	CABLE, USB REMOTE CHARGER	1
14	2375900	ADAPTER, USB POWER PORT	1
15	2377156	MANUAL-CD, i-PILOT LINK	1
16	2377155	MANUAL QCK REF, i-PILOT LINK	1
17	2320203	CAP-DUST,CONNECTOR,FEMALE	1
18	490389-1	CABLE, ETH (M12-M-M12-F, 30'	1

PARTS LIST VIEW POWERDRIVE V2 & RIPTIDE SP



ITEM #	PART NUMBER	DESCRIPTION	QTY
POWERDRIVE V2			
1	2990282	HEAD ASSY, V2, IP2	1
2	2994180	REMOTE ASSY, i-PILOT LINK	1
3	2370712	BATTERY, LIPO PACK	1
4	2374637	O-RING, BATTERY SEAL	1
5	2376421	DOOR, BATTERY	1
6	2383442	SCREW-3MM X .5 PPH MACHINE	4
7	2994908	BAG ASSY, i-PILOT LINK, V2	1
8	2372100	SCREW-#8-18 X 5/8 THD* (SS)	4
9	2370817	LANYARD,RMT w/CARABINER	1
10	2376716	PLUG, STRAIN RELIEF V2/SP	1
11	2332104	SCREW-1/4-20 X 5/8 S/S	2
12	2376312	TIE WRAP,BLACK,UV RESIST. NYLON	5
13	2375403	HEATSHRK .375X2 ADHV LINED	4
14	2994909	BAG ASSY, i-PILOT LINK, POWER	1
15	2373241	CABLE, USB REMOTE CHARGER	1
16	2375900	ADAPTER, USB POWER PORT	1
17	2377156	MANUAL-CD, i-PILOT LINK	1
18	2377155	MANUAL QCK REF, i-PILOT LINK	1
19	490389-1	CABLE, ETH (M12-M-M12-F, 30'	1
RIPTIDE SP			
1	2990283	HEAD ASSY, SP, IP2	1
2	2994180	REMOTE ASSY, i-PILOT LINK	1
3	2370712	BATTERY, LIPO PACK	1
4	2374637	O-RING, BATTERY SEAL	1
5	2376421	DOOR, BATTERY	1
6	2383442	SCREW-3MM X .5 PPH MACHINE	4
7	2994908	BAG ASSY, i-PILOT LINK, V2	1
8	2372100	SCREW-#8-18 X 5/8 THD* (SS)	4
9	2370817	LANYARD,RMT w/CARABINER	1
10	2376716	PLUG, STRAIN RELIEF V2/SP	1
11	2332104	SCREW-1/4-20 X 5/8 S/S	2
12	2376312	TIE WRAP,BLACK,UV RESIST. NYLON	5
13	2375403	HEATSHRK .375X2 ADHV LINED	4
14	2994909	BAG ASSY, i-PILOT LINK,POWER	1
15	2373241	CABLE, USB REMOTE CHARGER	1
16	2375900	ADAPTER, USB POWER PORT	1
17	2377156	MANUAL-CD, i-PILOT LINK	1
18	2377155	MANUAL QCK REF, i-PILOT LINK	1
19	490389-1	CABLE, ETH (M12-M-M12-F, 30'	1



PREPARING FOR INSTALLATION

Preparing for Installation

Tools you will need during installation

Terrova and Riptide ST

- Phillips screwdriver

PowerDrive V2

- Phillips screwdriver
- Needle-nose pliers
- Utility knife
- Heat gun or other heat source for installing heat shrink

Riptide SP

- Phillips screwdriver
- Needle-nose pliers
- Utility knife
- Heat gun or other heat source for installing heat shrink

To help with future service work or ordering replacement parts, please refer to the information box in the Notes section located on the back pages of this manual.

Before installing i-Pilot Link on your motor, make sure the trolling motor is properly installed on your boat. Find a clean and dry location for performing the installation.

Most importantly, disconnect all power to the trolling motor before installation. Not only will this protect you but also the sensitive electronics you are about to install.

Read through the entire installation process before performing the installation.

If you need help or need further instruction on installing i-Pilot Link, please call Minn Kota technical service at 1-800-227-6433 to talk to a customer service representative.

Humminbird Fishfinder

Depending on your Humminbird model and system configuration, you may need to purchase additional cables, as shown below. Visit our Web site at humminbird.com or call the Customer Resource Center at 1-800-633-1468.

- 700 Series with Ethernet: To connect the Ethernet cable to the Fishfinder, you will need to purchase the Ethernet Adapter Cable (AS EC QDE).
- Extension Cables are available for the Ethernet Cable if you need to extend the connection longer than the 30 feet provided. See humminbird.com for details.



INSTALLATION OF I-PILOT LINK CONTROLLER

For PowerDrive V2 and Riptide SP trolling motors go to page 12.

i-Pilot Link Installation on Terrova and Riptide ST Trolling Motors

* *i-Pilot Link will override all CoPilot functionality. CoPilot remotes will not function with i-Pilot Link.*

* *The Terrova foot pedal is fully functional and supported when i-Pilot Link is installed correctly.*

1. Disconnect all power to the trolling motor.
2. Remove control box cover screws and cover using Phillips screwdriver. (Figure 1)
3. If the trolling motor has the AutoPilot feature, unplug the AutoPilot control board and remove it from the control box. (Figures 2 and 3)
4. Remove grommet by pulling back on coil cord strain relief and pushing down on grommet. (Figure 4)



FIGURE 1



FIGURE 2



FIGURE 3



FIGURE 4



FIGURE 5

5. Route the Ethernet cable through the grommet hole and through the center of the coil cord. (Figure 5)
6. Plug the i-Pilot Link controller connector into the accessory connector as shown. (Figure 6) Be careful to orient connector properly prior to pushing together. The plug will click twice when pushing it together and the yellow end will be fully covered when installed properly.
 - Make sure connector is aligned properly. (Figure 7)
 - Ensure connector is fully seated as shown. (Figure 7)



FIGURE 6



FIGURE 7



7. Install new grommet supplied with i-Pilot Link by snapping it into the hole located in front of the coil cord strain relief. (Figure 8)
8. Place the i-Pilot Link controller where the control box cover was installed and secure with supplied #8 screws. Do not over tighten screws. (Figure 9)
9. i-Pilot Link is now installed on the motor. Skip ahead to page 22 to verify the installation.



FIGURE 8



FIGURE 9



FIGURE 10



FIGURE 11



FIGURE 12

i-Pilot Link Installation on PowerDrive V2 and Riptide SP

**Note: Once i-Pilot Link is installed in a PowerDrive V2 or Riptide SP motor, the foot pedal cannot be used again unless i-Pilot Link is fully uninstalled.*

1. Disconnect all power to the trolling motor
2. If a CoPilot is installed, it must be removed as follows:
 - a. Disconnect motor connector and foot pedal connector from CoPilot. (Figure 10)
 - b. Remove the CoPilot receiver from the motor by removing both mounting screws. Do not replace these screws as the side plates will be removed in step 13 of this installation. (Figure 11)
3. Remove the control box cover screws and cover using Phillips screwdriver. (Figure 12)



4. If the trolling motor has AutoPilot, it must be removed as follows:
 - a. Disconnect all six AutoPilot connectors from AutoPilot controller, using a needle-nose pliers and a utility knife to remove any heat shrink insulation that may exist. (Figure 13)
 - b. Remove the AutoPilot controller from the head of the trolling motor (Figure 14). This is done by pushing out the locking tabs then lifting the circuit board out. Finally, lift out the compass.
5. Remove grommet by pulling back on coil cord strain relief and pushing down on grommet until it pops out. (Figure 15)



FIGURE 13

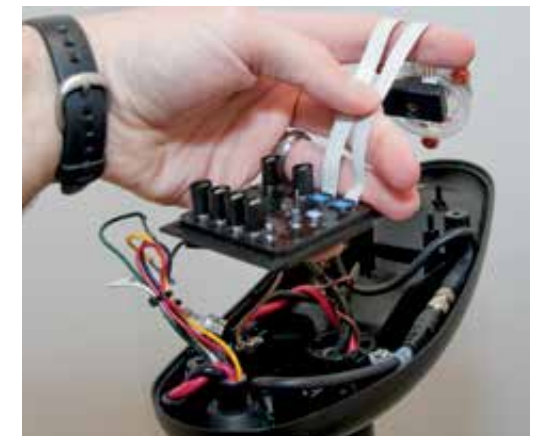


FIGURE 14



FIGURE 15

Sonar Cable (Universal Sonar Motors Only)

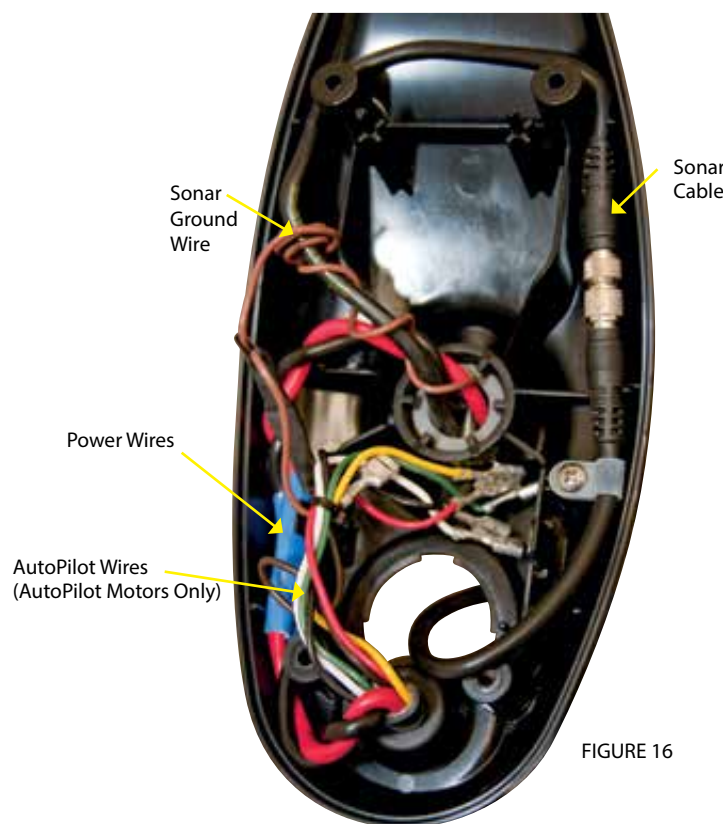


FIGURE 16

6. Review the cables in the head of the trolling motor
 - a. If a sonar cable is present, it must be routed around the outer perimeter of the control box. The sonar ground wire should also be routed as shown. (Figure 16)
 - b. The motor power wires must be routed as shown. (Figure 16)
7. Route the i-Pilot Link controller cable through the grommet hole and through the center of the coil cord (Figure 17).



FIGURE 17



8. If AutoPilot was removed, insulate the loose AutoPilot connectors as follows:
 - a. For Powerdrive V2 Motors: Using a needle-nose pliers push all six AutoPilot connectors that were disconnected in step 4 onto terminal holders located on the underside of the i-Pilot Link Controller. (Figure 18)

IMPORTANT: Pull on each wire to make sure it is secured properly. Loose wires can cause damage to i-Pilot Link Controller and the entire motor.

AutoPilot connectors must be placed onto holders exactly as shown. (Figure 19)
 - b. For Riptide SP motors: Apply heat shrink insulation supplied in bag assembly to the ends of all six loose AutoPilot connectors as shown (Figure 20). Use a zip tie to bundle connectors together. Trim the zip tie and place connector bundle in the middle of the control box as shown. (Figure 21)



FIGURE 18 Insert AutoPilot wires into terminal holders.



FIGURE 19

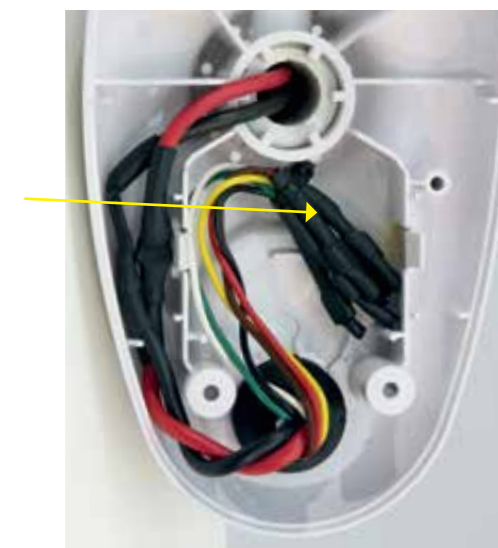


FIGURE 21 Place insulated AutoPilot wires in the bottom center of the control box as shown.

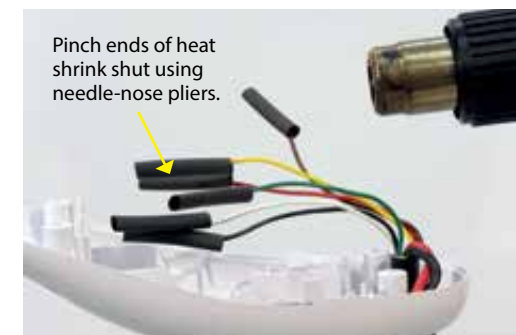


FIGURE 20 Insulate and seal six AutoPilot wires on Riptide SP motors with supplied heat shrink.



FIGURE 22

9. Install new grommets supplied with i-Pilot Link by snapping it into the hole located in front of the coil cord strain relief. The i-Pilot Link controller cable must be placed in the pass-through slot of the grommet. (Figure 22)

10. Place the i-Pilot Link controller where the control box cover was installed. Pull any extra controller cable out of the control box by gently pulling on the cable. (Figure 23)

11. Secure cover with supplied #8 screws. Do not over tighten screws. (Figure 24)

12. Secure the i-Pilot Link controller cable to the motor coil cord in all three locations shown using zip ties provided. (Figure 25) Trim zip ties using utility knife. Failure to secure cable will result in possible damage to the cabling during operation.

13. Remove the left and right side plates of trolling motor by loosening all four side plate screws using a Phillips screwdriver (Figure 26)



FIGURE 23



FIGURE 24



FIGURE 25



FIGURE 26



14. Remove center housing by pushing in on both sides and lifting up at the same time. This will expose the main control board and wiring. (Figure 27)

15. The steering motor cable passes through the top of the center housing removed in step 14. This cable contains a black and white wire. Disconnect these two wires by pulling each connector apart. (Figure 28) Riptide SP motors will have these connections covered with heat shrink which must be removed with a utility knife.

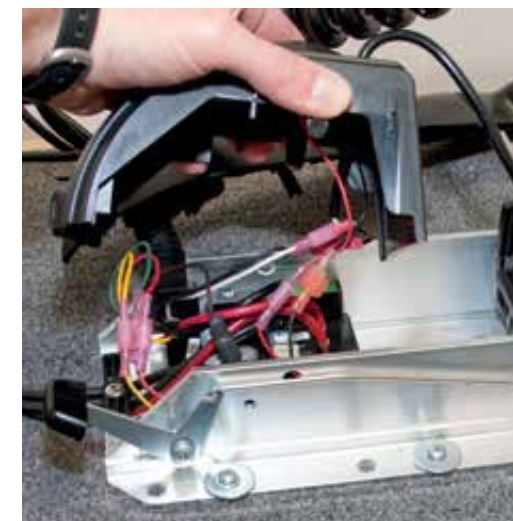


FIGURE 27

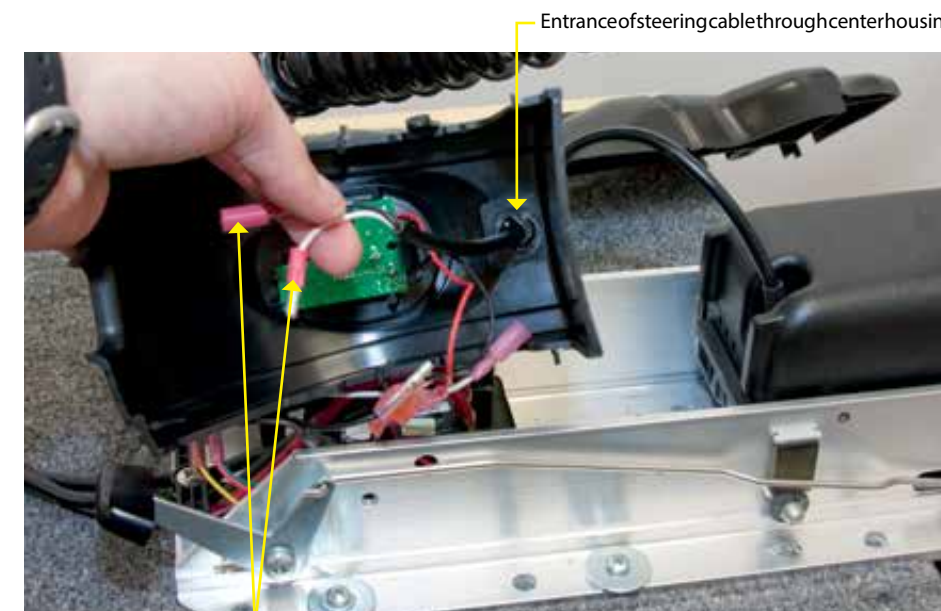


FIGURE 28

Entrance of steering cable through center housing
Disconnect both wires by removing heat shrink and pulling them apart.



- 16. Loosen the cable strain relief that is secured to the base of the motor and install the i-Pilot Link controller steering cable into the open strain relief slot. (Figure 29)
- 17. Tighten the cable strain relief as shown. The i-Pilot Link controller steering cable should slide freely through the strain relief when installed properly. (Figures 30 and 31)

FIGURE 29



Foot Pedal Cable
Motor Power Cable

FIGURE 30

i-Pilot Link Controller Steering Cable



Reinstall strain relief screw.

FIGURE 31



- 18. Slide four pieces of heat shrink insulation over each side of the wires that were disconnected in step 15. (Figure 32)

Slide heat shrink over steering motor wires.

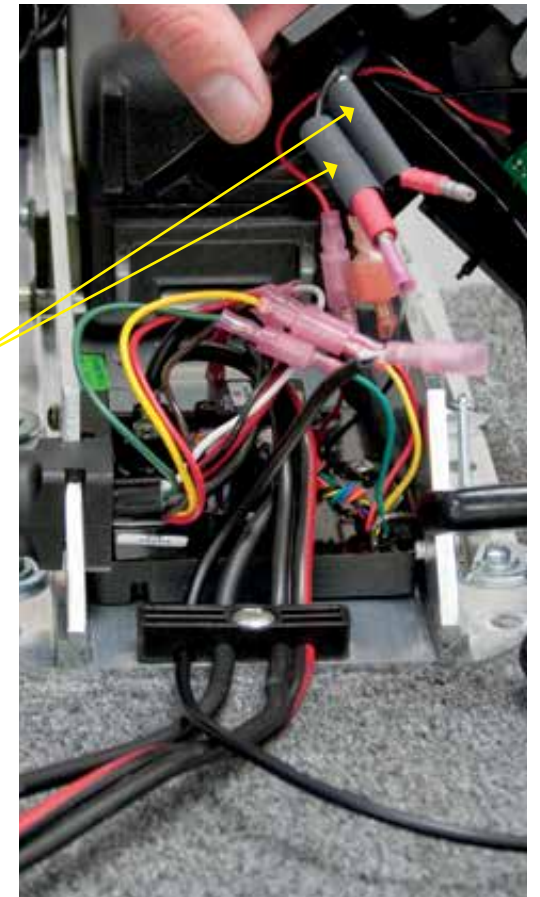
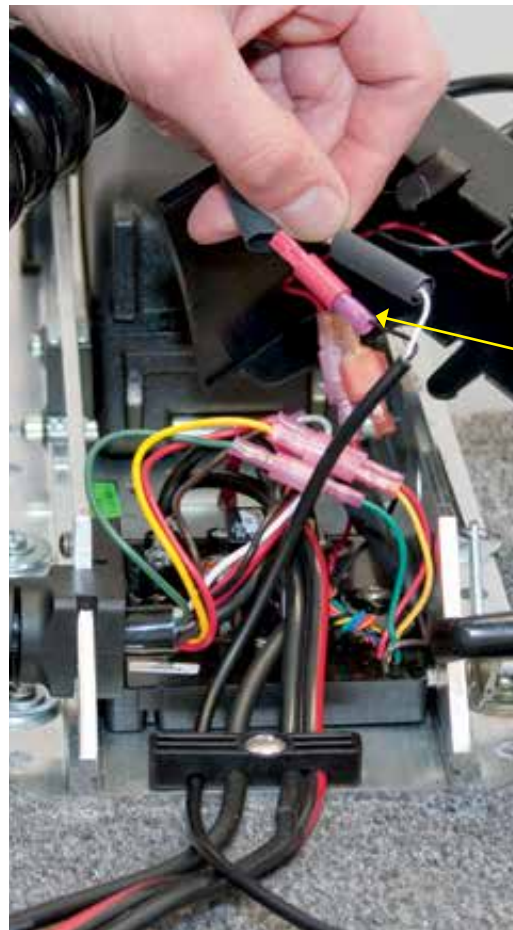


FIGURE 32



Connect steering wires: white to white black to black

19. Connect the black and white wires from the i-Pilot Link controller cable to the black and white steering motor wires, making sure black is connected to black and white is connected to white. (Figure 33)
20. Complete the installation by positioning the heat shrink over the connections and shrink down, using a heat gun or other heat source, being careful not to overheat any wire or parts.

Seal connections with heat shrink.

IMPORTANT: DO NOT OVERHEAT WIRES OR SURROUNDING PARTS WHEN INSTALLING HEAT SHRINK!

21. Reinstall center housing over control board by pushing it down until the side fingers lock into place. The new i-Pilot Link Controller steering cable should be exiting the cable exit hole at the center and bottom of the center housing. (Figure 34)



FIGURE 34



22. Reinstall both side plates using Phillips screwdriver. If a Co-Pilot was uninstalled, use new 1/4-20 x 5/8" Phillips screws provided. (Figure 35)
23. If a foot pedal is connected to the trolling motor, it must be disconnected. Once i-Pilot Link has been installed the foot pedal cannot be used unless i-Pilot Link is completely uninstalled.
24. Connect i-Pilot Link controller cable to the foot pedal connector, making sure the connector nut is tight (Figure 36)

IMPORTANT: DO NOT place dielectric grease or any type of lubricant in the connector.

25. i-Pilot Link is now installed on the motor. Skip ahead to the next section to verify the installation.



FIGURE 35



FIGURE 36



VERIFYING INSTALLATION OF I-PILOT LINK CONTROLLER AND REMOTE

It is important to verify your i-Pilot Link installation prior to going on the water. If this cannot be done, it is highly recommended that system verification be done in an open area on a calm day with a fully operational outboard motor for a backup means of powering your boat.

To verify that i-Pilot Link is working properly before going on the water, follow the steps below.

1. Trolling motor should be correctly installed and mounted to the bow of a boat.
2. The boat and trolling motor must be located outside and have a direct view of the sky to obtain GPS satellite signals.
3. Verify that all obstructions are away from the prop in all directions in both the stowed and deployed positions.
4. Connect power to the trolling motor.
5. Deploy the motor so the motor shaft is completely vertical.
6. The i-Pilot Link controller will emit four short beeps on startup.
7. Turn on the remote by pressing the OK key and verify the LCD comes on.
8. When i-Pilot Link is powered up, it starts to gather satellite information about its location. A minimum satellite signal level must be achieved before all i-Pilot Link functionality is available. This minimum level is one bar on the GPS signal icon. With no bars showing, only manual functions will be available.
9. Verify all manual functions by pressing and .
10. If you experience any problems with any of the steps above, or cannot obtain a GPS satellite signal, refer to the troubleshooting section.



CONNECT THE I-PILOT LINK TO THE HUMMINBIRD FISHFINDER

The i-Pilot Link can be connected directly to the Humminbird Fishfinder or to the Humminbird Ethernet Switch (optional). If you purchase the Ethernet Switch, install it using the instructions in the Ethernet Accessory Guide.

WARNING! The power source must be turned off before you proceed with this installation.

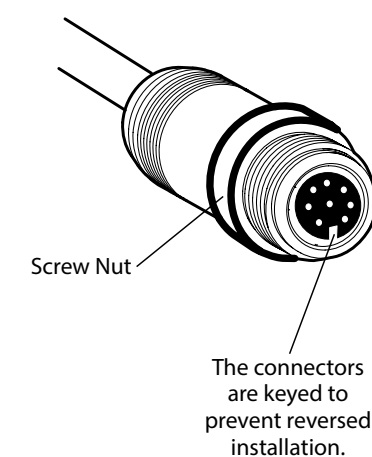
NOTE: The Ethernet extension cable is optional for your installation. If you need to purchase additional extension cables, visit our Web site at humminbird.com or call the Humminbird Customer Resource Center at 1-800-633-1468.

1. Locate the Ethernet cable on the i-Pilot Link.
2. If you are using the Ethernet extension cable for your installation, connect it to the Ethernet cable on the i-Pilot Link. The connectors are keyed to prevent reversed installation, so be careful not to force the connectors together. Hand-tighten the screw nut.
If you do not need the Ethernet extension cable for your installation, proceed to step 3.
3. Route the cable to the Humminbird Fishfinder (or the optional Ethernet Switch).

NOTE: The cable should be routed through an established routing system on the boat, in an area with minimal interference. Inspect the selected route carefully to ensure that there are no sharp edges, obstacles, or obstructions that may damage the cables.

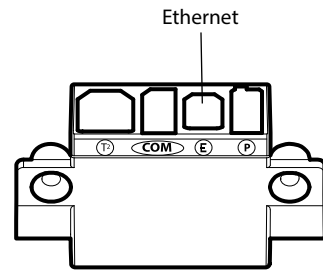
4. 700 Series: Connect the Ethernet Cable to the Ethernet Adapter Cable (AS EC QDE). Insert the connector into the Ethernet port on the cable collector. See your Humminbird installation guide for details about installing the quick disconnect mount.
800/900/1100 Series: Insert the other end of the Ethernet Cable into the Ethernet port on the Fishfinder. Hand-tighten the screw nut.

Hand-Tightening the Screw Nut

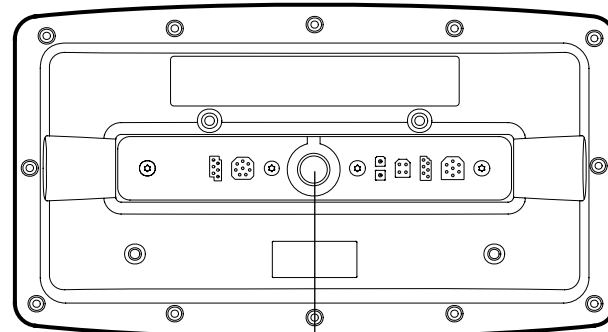




700 Series Cable Collector with Ethernet

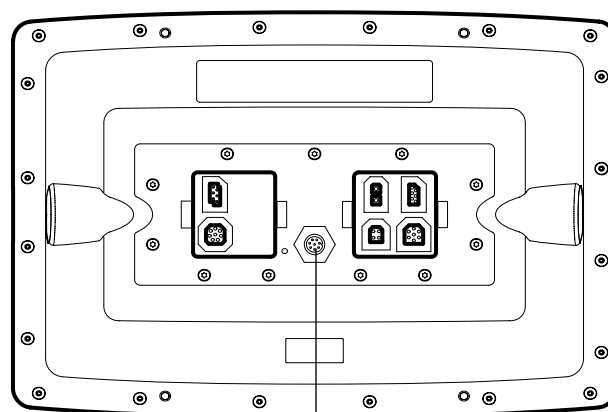


800/900 Series (rear view)



Ethernet Port

1100 Series (rear view)



Ethernet Port



VERIFYING INSTALLATION ON THE HUMMINBIRD FISHFINDER

All equipment should be connected and powered before you turn on the Fishfinder. When the i-Pilot Link is detected, *i-Pilot Link Connected* will display briefly on the screen. You can also confirm the installation connections using the following instructions.

1. Press the **Ⓢ** POWER/LIGHT key on the Fishfinder.
2. When the Title screen is displayed, press the MENU key to open the Start-Up Options Menu.
3. Use the 4-WAY Cursor Control key to select Normal, and press the RIGHT Cursor key.
4. Press and hold the VIEW key. Select System > Accessory Test. Confirm that i-Pilot Link is listed as connected. It may take a minute for the equipment to be detected.
5. Press and hold the VIEW key. Select System > GPS Diagnostic View. Confirm that External GPS is displayed and the Fix Type indicates Enhanced or 3D.

Title Screen



NOTE: A GPS Receiver is required to enable the navigation features on the Fishfinder. The Fishfinder uses the data from the GPS Receiver attached directly to it or selected from the Ethernet network.

NOTE: If the GPS Diagnostic View or Accessory Test is not displayed in the View Rotation, press the MENU key twice to open the Main Menu. Select the Views tab > GPS Diagnostic View or Accessory Test. Change the setting for each view to Visible.

Confirming that i-Pilot Link is Detected

SYSTEMSTATUS	
ACCESSORY TEST	
Aux. Temperature	UNCONNECTED
CannonLink	UNCONNECTED
GPS	CONNECTED
InterLink	UNCONNECTED
Speed	UNCONNECTED
Temperature	UNCONNECTED
WeatherSense	UNCONNECTED
XM Weather	UNCONNECTED
iPilot v.1.036	CONNECTED

Depth	m	N	34°36.849'	Speed	kph	COG	°T	VLT	V
197			W 084°37.909'	0.0	216	13.8			

GPS listed as connected

i-Pilot Link listed as connected

Confirming the GPS Fix Type

GPS Diagnostic View	
Fix Type	Enhanced
HDOP	1.00
Est Pos Error	17ft
Altitude	1083ft
Speed	5.6mph
Course	277°t
External GPS	
7/19/07	NORTH 25°53.999'
11:58:45AM	WEST 080°07.648'
SD Card	43/120MB
SD Card	----

Depth	ft	Temp	°F	Speed	mph	Course	°T	VLT	V
36.4		74.3		5.6	277	11.7			

Fix Type should be 3D or Enhanced

KNOWING YOUR REMOTE

Remote Layout

See diagram to the right.

Power

To turn the remote on, press the OK key.

To turn the remote off, press and hold the OK key or select Home > Settings > Off – OK

Construction

The remote is waterproof and floats in water.

Range

The range of the remote will be greatly reduced if it is used near or mounted to any metal object including aluminum or steel. It is also recommended that the front end of the remote not be obstructed during use.

HEADER

State-of-Charge indicator for the remote battery.

Charging Battery

Full Battery

Low Battery

GPS Signal Strength
Flashing indicates no GPS fix.

12:13 PM OCT 18 **Time and Date**
This data is provided by the GPS.

Humminbird Connection
Highlights when the i-Pilot controller is in communications with the Humminbird.
When there are no communications, the arrows turn gray.

DASHBOARD

GPS Speed

Motor Speed

Cruise Control Target Speed

Navigation Mode

Spot-Lock Paused

Legacy AutoPilot

Spot-Lock

Navigating to End

Following a Contour

Advanced AutoPilot

Navigating to Start

Navigating to Waypoint

Navigating a Route

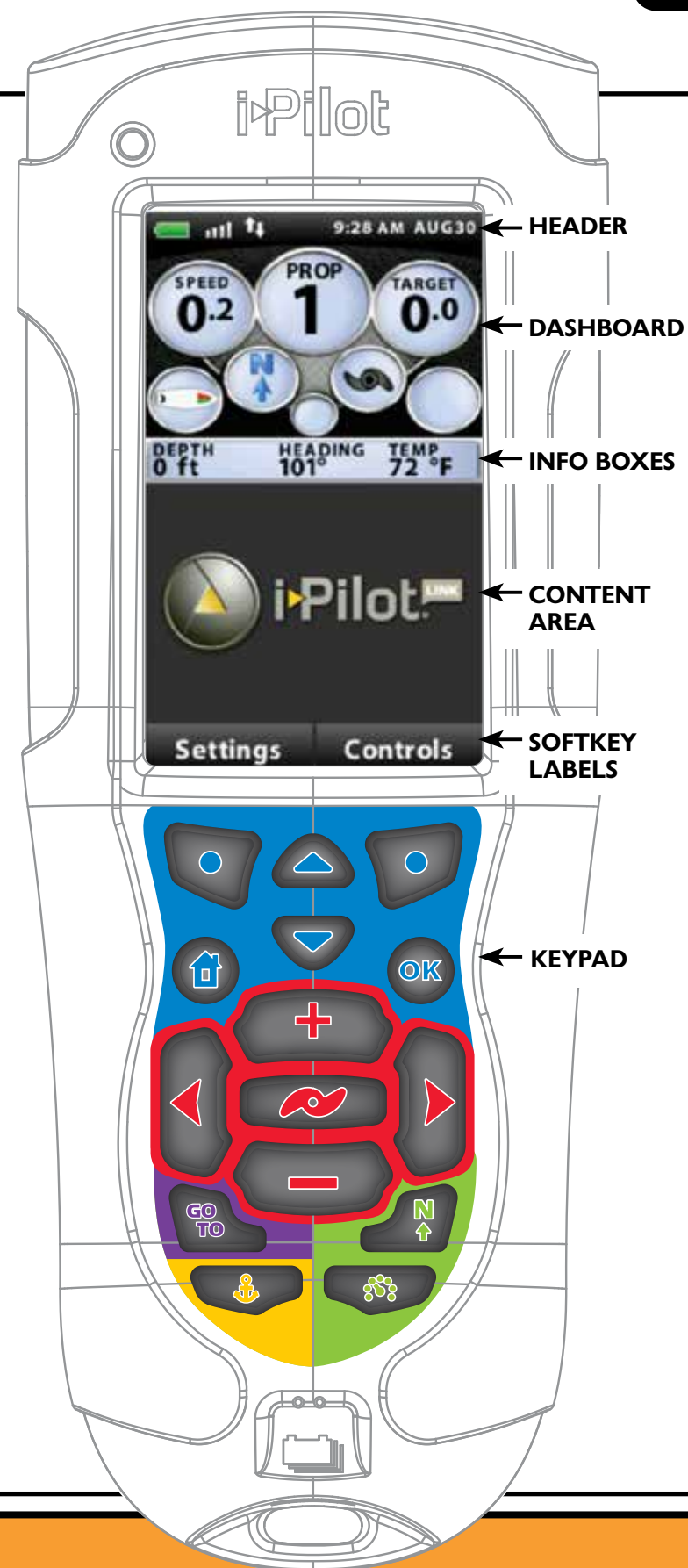
Recording an iTrack
When the red dot is shown, it indicates that Link is currently recording an iTrack.

Prop Status
The states of the prop icon are:

- Prop icon is not on = prop is disabled.
- On steady but not rotating = prop is enabled but the prop speed is zero.
- Rotating = prop is enabled and speed is greater than zero.
- Blinking = prop is disabled but Link is in a mode of navigation and the user is being reminded to enable the prop.

Cruise Control
When the icon is shown, the Cruise Control feature is enabled.

2377155 Revision B



KEYPAD

MENU CONTROL KEYS

Left Softkey & Right Softkey
These keys change function based on mode of operation and which screen is presently displayed. The Softkey Labels at the bottom of the LCD indicate their current function.

Menu Up & Menu Down
Used to navigate the menus.

Home
Pressing this key will always bring up the Home Screen.

OK
Press to accept menu selections.

Remote power:

- Press and release to turn the remote on.
- Press and hold for 3 seconds to turn the remote off.

MANUAL CONTROL KEYS

Speed Up **Steer Left**

Speed Down **Steer Right**

Prop On/Off

NAVIGATION KEYS

GOTO
Opens the list of iTracks, Spot-Locks and Waypoints that are within navigable range. Also used to switch from the Home Screen to the Active Screen during i-Pilot navigation.

Spot-Lock
Press to enable Spot-Lock.
Press and hold to mark a Waypoint on the Humminbird (Spot-Lock will not engage).

Auto Pilot
Press to enable AutoPilot or Advanced AutoPilot.
The default mode is selected through the Controls Menu on the remote.

Cruise Control
Press to bring up the Cruise Control Access screen. Target speed is adjusted using the + and – keys and accepted using the OK key.



SETTINGS MENU

To enter the Settings Menu, select Home > Settings Softkey



Settings menu

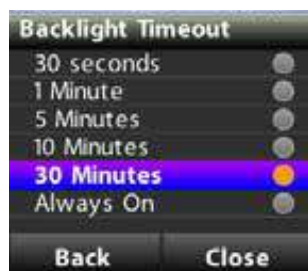
Backlight Settings:

Settings Menu > Backlight Softkey



Backlight Settings > Brightness

This screen allows the user to manually control the brightness of the backlight. Use the up/down arrow keys to adjust. Select the Back or Close Softkey to save the setting and exit.



Backlight Settings > Timeout

The selections on this screen control how long the backlight will stay on after the last key press. Use the up/down arrow keys to select a new value and press the OK key to accept.



Keypad Lock:

To lock the keypad: From the Settings menu, press and hold the Lock Softkey.

To Unlock the keypad: Press and hold either Unlock Softkey.



Keypad Lock

Settings:

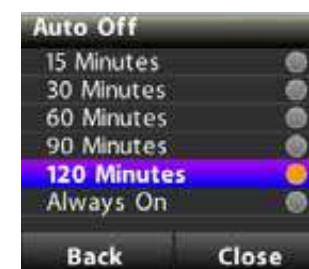
Settings > Configurations

Configurations menu

Enter this menu by selecting Home>Settings Softkey> Configurations > OK

Configurations > Restore Softkey

This selection allows the user to reset the configurations on the remote to factory defaults.



Configurations > Auto Off

The selections on this menu control how long after the last key press the remote will automatically shut off. Use the up/down arrow keys to select a new value and press the OK key to accept. Select the Back or Close Softkey to save the setting and exit.



Settings > Configurations

Configurations > Audio Mode

a. The selections on this menu control how long after the last key press the remote will automatically shut off. Use the up/down arrow keys to select a new value and press the OK key to accept. Select the Back or Close softkey to save the setting and exit.

b. Refer to the Audio Modes section of the manual for further details.



Configurations > Language

Configurations > Language

From this menu, the user has the option of changing the language of the text that appears on the remote screen. Use the up/down arrow keys to select a new language and press the OK key to accept the setting and exit the menu. Or, select the Back or Close Softkey to exit without making changes.



Configurations > Time

Configurations > Time

From this menu, the user configures the following:

- 12-hour/24-hour: This controls the format that the time appears in on the screen header. Use the up/down arrow keys to select the desired format a new value and press the OK key to accept. Select the Back or Close Softkey to save the setting and exit.
- Time Zone: Choosing this selection will bring up a list of time zones.
- Daylight Savings: This checkbox is used to configure the Link remote and controller to account for Daylight Savings Time. Highlight this checkbox and use the OK key to enable/disable the feature and select the Back or Close Softkey to exit the screen.



Configurations > Date

From this menu, the user configures the format that the date appears on GOTO screen on remote. Use the up/down arrow keys to select a new value and press the OK key to accept. Select the Back or Close Softkey to save the setting and exit.



Configurations > Date

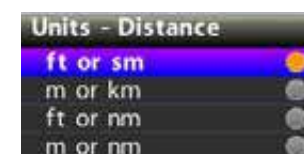
Configurations > Units

From this menu, the user configures the following:



- Depth: Choosing this selection will bring up a list of units to use when displaying depth.

Use the up/down arrow keys to select a new value and press the OK key to accept. Select the Back or Close Softkey to save the setting and exit.



- Distance: Choosing this selection will bring up a list of units to use when displaying distance.

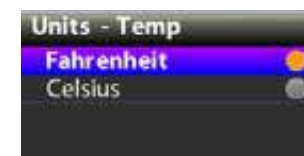
Use the up/down arrow keys to select a new value and press the OK key to accept. Select the Back or Close Softkey to save the setting and exit.

ft or sm = feet or statute miles
m or km = meters or kilometers
ft or nm = feet or nautical miles
m or nm = meters or nautical miles



- Speed: Choosing this selection will bring up a list of units to use when displaying speed.

Use the up/down arrow keys to select a new value and press the OK key to accept. Select the Back or Close Softkey to save the setting and exit.



- Temperature: Choosing this selection will bring up a list of units to use when displaying temperature.

Use the up/down arrow keys to select a new value and press the OK key to accept. Select the Back or Close Softkey to save the setting and exit.

Settings > About

Displays the current revisions of software for the remote and the controller

Settings > Learn

Used during the process of learning the remote to a controller (see details on page 33)

Settings > Update Software

Used to check for and initiate software updates for the remote. See details in the Software Update section.



CONTROLS MENU

To enter the Controls Menu, select Home > Controls Softkey



Controls Menu

Controls > Resume

When navigation is paused (Spot-Locked), selecting Resume will restart the original navigation mode. Note that this selection is only available when navigation is currently paused.

Controls > Reverse

While navigating an iTrack or contour line, selecting Reverse will change the direction of travel. Note that this selection is only available while navigating these types of features.

Controls > Record

Select Record to begin recording an iTrack. This selection is also used to return to the Record Active screen if a recording is in process and the user has brought up a different screen.

Controls > Arrival Mode

The selections on this menu are used to tell i-Pilot Link what to do when a destination is reached during certain types of navigation. Use the up/down arrow keys to select the setting and press the OK key to accept. Select the Back or Close softkey to save the setting and exit.

a. This same configuration is accessible through the Humminbird.



Controls > Arrival Mode

Controls > Autopilot Mode

From this menu the user configures which version of AutoPilot to use when AutoPilot is engaged. Use the up/down arrow keys to select the setting and press the OK key to accept. Select the Back or Close Softkey to save the setting and exit.

a. This same configuration is accessible through the Humminbird.



Controls > Autopilot Mode

Controls > Sort Order

The selections on this menu control the order in which navigational points appear on the GOTO screen. Use the up/down arrow keys to select a new value and press the OK key to accept. Select the Back or Close softkey to save the setting and exit.



Controls > Sort Order

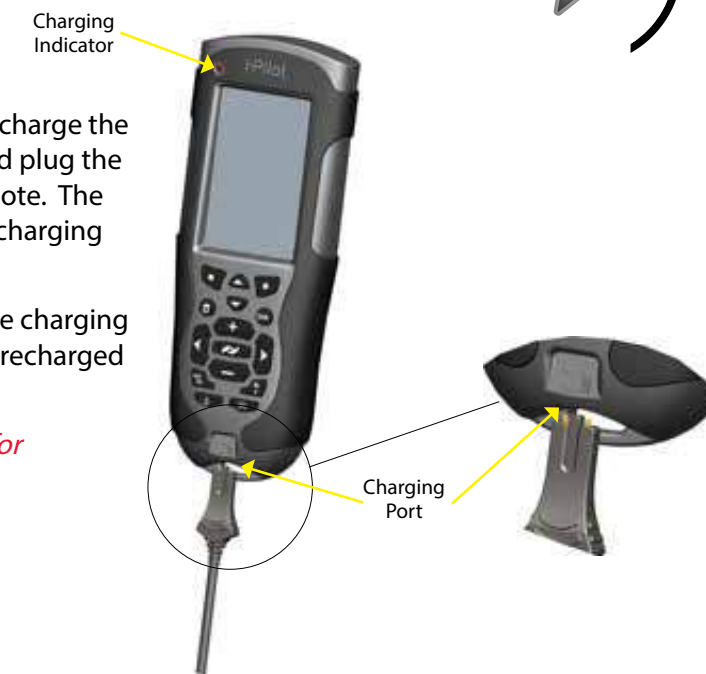


REMOTE BATTERY

The i-Pilot Link remote contains a rechargeable battery. To charge the battery, plug the USB end into the included AC adapter and plug the other (two pronged) end into the charging port of the remote. The Charging Indicator will illuminate whenever an energized charging cable is connected.

The user also has the option of plugging the USB end of the charging cable into any USB type power source. The remote can be recharged while the remote is on or off.

NOTE: The USB end of the charging cable is not intended for prolonged exposure to saltwater environments.



KNOWING YOUR I-PILOT LINK CONTROLLER

Construction

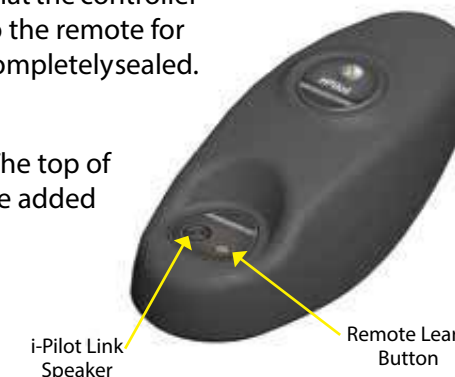
The i-Pilot Link controller contains a very sensitive digital compass and is where all GPS satellite and i-Pilot Link remote signals are received. It is very important that the controller has a clear view of the sky in all directions and has a clear line of sight to the remote for optimum performance. All electronics within the controller enclosure are completely sealed.

Remote Learning

The i-Pilot Link remote is prelearned to the controller from the factory. The top of the controller has a single learn button to allow additional remotes to be added to the system. To learn additional remotes:

1. Power up the trolling motor.
2. Push and hold the learn button down. A steady audio tone will be heard while holding this button.
3. While holding the learn button on the controller, from the remote home screen select: Settings > Learn and press the OK key
4. If the learn process was successful, the controller will respond with four beeps. In addition, the Dashboard section of the remote will begin to display motor status information such as prop speed.

A remote can only be learned to one controller at a time. A controller can have up to 4 remotes learned to it and actively communicating with it.





Audio Modes

The i-Pilot Link Controller also contains an internal speaker which can be programmed to work in two different audio modes. The speaker is programmed to operate in audio mode one from the factory. To select the different audio modes, from the Home screen go to: Settings > Configurations > Audio Mode. For an explanation of each audio mode and their sounds see the table below.

WHAT CONDITION CAUSES IT	AUDIO MODE	AUDIO PATTERN
Start up	Modes 1 and 2	4 short beeps
Manual prop on	Mode 2	Single beep
Manual prop off	Mode 2	Double beep
Speed +	Mode 2	Single beep
Speed -	Mode 2	Single beep
Enabling any of these functions: GoTo iTrack, GoTo Waypoint, Spot-Lock, AutoPilot, Cruise Control	Mode 2	Single beep
When GPS signal strength goes to no bars while in a GPS-based mode	Modes 1 and 2	Error
Attempting to enable a GPS-based mode when no signal strength bars are shown	Modes 1 and 2	Error
MOM button on the footpedal is pressed and a remote button press attempts to override it	Mode 2	Error
End of an iTrack is reached and the termination option is set to OFF	Mode 2	4 longer beeps
Learn button is pressed	Modes 1 and 2	Steady tone
Learn successfully completed	Modes 1 and 2	4 longer beeps



Power

The i-Pilot Link controller will turn on whenever the trolling motor has power. For Terrova and Riptide ST motors this is when the green system ready light is on. For PowerDrive V2 and Riptide SP motors this is whenever the motor is connected to power.

**For this reason it is very important to disconnect a PowerDrive V2 or Riptide SP motor from power when not in use or battery drain will occur.*

Accuracy

The accuracy and responsiveness with which i-Pilot Link controls your boat is highly dependent upon many variables. Just a few of these variables and their general effects on responsiveness and accuracy are given below so that the behavior of the system can be understood.

VARIABLE	EFFECT
Ratio of motor thrust to boat weight	Excessive thrust on a smaller boat can cause i-Pilot Link to overcorrect. Not enough thrust on a large boat can cause i-Pilot Link to respond slowly.
Wind	Excessive wind and/or current can reduce i-Pilot Link's positioning accuracy.
GPS signal strength	The greater number of GPS signal bars the greater the accuracy.
Trolling motor battery power level	A fully charged battery will give the best performance.

System Startup

Once you have verified i-Pilot Link's installation it's time to start using it on the water. Follow these simple steps each time you power up your trolling motor for successful operation:

1. Connect trolling motor to power.
2. Deploy trolling motor into water.
3. Turn the remote on by pressing the OK key. Verify the Dashboard section of the screen shows all motor status information.
4. You are now able to use all manual functions: and .
5. After i-Pilot Link has obtained a minimum GPS signal strength of one bar, all remaining functions will become available.



SOFTWARE UPDATES

Set up an online account at humminbird.com so that you will receive the latest Humminbird news and software updates for your Fishfinder. The i-Pilot Link remote and controller software are also updated through the Humminbird Fishfinder.

WARNING! Humminbird is not responsible for the loss of data files (waypoints, routes, tracks, groups, snapshots, recordings, etc.) that may occur due to direct or indirect damage to the unit's hardware or software. It is important to back up your Fishfinder's data files periodically. Data files should also be saved to your PC before restoring the unit's defaults or updating the software. See your Humminbird online account at humminbird.com and the Waypoint Management Guide.

Required Equipment

Personal computer with Internet access, a formatted SD memory card, a USB Memory Card Reader (AS CR), and an i-Pilot Link compatible Humminbird Fishfinder.


NOTE: To purchase equipment, visit our Web site at humminbird.com or contact our Customer Resource Center at 1-800-633-1468.

1. Download the Software

1. Install a formatted SD memory card into the card reader connected to your PC.
2. Register your Fishfinder: Log on to humminbird.com. Click My Account. Set up a new account or log into your current account and add the i-Pilot Link to your My Equipment tab.
3. Download: From My Account\My Profile\My Equipment, click the file name of the latest software update (unit name [version #]) for your Fishfinder.
 - Read the instructions in the dialog box and click Download.
 - Follow the on-screen instructions to save the software files directly to the SD Card.
4. Repeat step 3 to download the i-Pilot Link controller and remote software files.

NOTE: The timing of software updates may vary, so there might not be 3 files required for download every time you visit your Humminbird online account.

2. Prepare the Equipment

1. Turn on the main power source.
2. Power on the trolling motor. If you have a Terrova or Riptide ST trolling motor, deploy it into the water.
3. Turn on the remote by pressing the OK key. Ensure the battery is well charged. If the battery charge is not sufficient, you will be prompted during the process to plug in the charger.
4. Turn on the Fishfinder by pressing the  POWER/LIGHT key, and follow the on-screen prompts to start Normal mode.



5. Press and hold the Fishfinder VIEW key. Select System > Accessory Test.
6. Confirm that i-Pilot Link is listed as connected. It may take a minute for the equipment to be detected. You will refer to this view throughout the update. Note the current software version number shown next to i-Pilot Link.

NOTE: If the Accessory Test View is not shown in the submenu, select the Main Menu > Views tab > Accessory Test > Visible.

3. Update the Software

1. Install the SD card with the updated software files into the Fishfinder card slot.
2. Fishfinder Update: The Fishfinder will recognize the new software. Follow the dialog box instructions to confirm software installation.

i-Pilot Link Update: The software will be updated automatically. It may take up to two minutes for the software to be detected on the network, and the Fishfinder will display on-screen dialog boxes to indicate that the update is in progress.

NOTE: You may notice that the i-Pilot Link will disconnect and then reconnect during the software update. This is part of the update process.

3. When the i-Pilot Link software has been updated, the new software version number will be displayed on the Fishfinder Accessory Test View.
4. To finish updating the remote and controller, proceed to the next section.

4. Update the Remote

The new software for the remote is now loaded on the Link Controller. You must now go to the remote and initiate the download of the remote software to the remote itself.

1. From the remote Home screen, select: Settings Softkey > Update Software > OK.
2. From this screen, select the Update option.
3. A message saying "Software Updating" will appear along with a progress bar. After that, another message saying "Programming Flash" will appear along with a progress bar.
4. After the second progress bar finishes, the remote will automatically restart.

5. Update the Link Controller

1. Cycle power to the trolling motor to regain proper motor control.



I-PILOT SETUP



From the Humminbird:

ENABLE I-PILOT LINK NAVIGATION

To start i-Pilot Link navigation from the Fishfinder, the i-Pilot Navigation menu option must be turned on. When i-Pilot Navigation is turned on, the related i-Pilot Link menus will be added to the menu system. If i-Pilot Navigation is turned off, your Fishfinder will operate with its traditional Humminbird navigation features.

NOTE: When i-Pilot Navigation is turned on, navigation from other connected autopilots will be cancelled.

1. Main Menu: Press the MENU key twice.
2. Select the Accessories tab > i-Pilot > i-Pilot Navigation > On or Off. (Default = On)

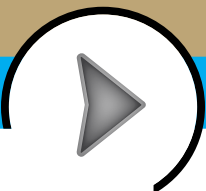
i-Pilot	
i-Pilot Navigation	On
Auto upload Data	On
Arrival Mode	Off
AutoPilot Mode	Advanced
AutoPilot Heading Line	On
i-Pilot Pre-Arrival Alarm	15m
i-Pilot Off Course Alarm	15m

UPLOAD DATA FROM THE I-PILOT LINK

When Auto Upload Data is turned on, the Fishfinder copies the i-Pilot Link's saved iTracks and Spot-Locks. In this case, the Fishfinder and i-Pilot Link are synchronized, so if you delete a Spot-Lock or iTrack on the Fishfinder, it will be deleted on the i-Pilot Link. When Auto Upload Data is off, deleting an item on the Fishfinder will not affect the data stored on the i-Pilot Link and vice versa.

1. Main Menu: Press the MENU key twice.
2. Select the Accessories tab > i-Pilot > Auto Upload Data > On or Off. (Default = On)

NOTE: The maximum number of iTracks, Spot-Locks, waypoints, routes, and tracks may vary due to the setup of your Waypoint Management directory. Groups and sub-groups also use storage, and the storage limit is influenced by the complexity of your Waypoint Management directory. See Manage your i-Pilot Link Navigation Data for details.



SET THE ARRIVAL MODE

When you are navigating with the i-Pilot Link and reach the destination, set the Arrival Mode menu option to tell the system what to do next. The setting will determine if you will control the boat manually or transition to another type of i-Pilot Link navigation after the destination point is reached in a waypoint, route, or iTrack.

NOTE: The Arrival Mode menu setting does not apply to Spot-Lock or Follow the Contour.

Off returns the unit to manual mode after navigation is finished. You must be prepared to take manual control of the boat.

Spot-Lock creates a Spot-Lock and engages a Spot-Lock after navigation is finished.

AutoPilot continues navigation towards the set AutoPilot heading.

From the Humminbird:

1. Main Menu: Press the MENU key twice.
2. Select the Accessories tab > i-Pilot > Arrival Mode.
3. Press the RIGHT or LEFT Cursor keys to select Off, Spot-Lock, or AutoPilot. (Default = Off)

From the remote:

1. From the Home screen, select the Controls Softkey > Arrival Mode > OK.
2. Use the up/down arrow keys to select a new value and press the OK key to accept. Select the Back or Close Softkey to save the setting and exit.



SET THE I-PILOT PRE-ARRIVAL ALARM

You can set the alarm to provide an alert when the boat is within the set distance to the destination point in a waypoint, route, or iTrack. For example, if i-Pilot Link is navigating an iTrack, and the Pre-Arrival Alarm is set to 100 feet, the alert will trigger when the boat is within 100 feet from the iTrack End Point.

CAUTION! When the alert sounds, be prepared that the i-Pilot Link will soon transition to the type of navigation set in the Arrival Mode menu option. In which case, you may need to take manual control of the boat.

1. Main Menu: Press the MENU key twice.
2. Select the Accessories tab > i-Pilot > i-Pilot Pre-Arrival Alarm.
3. Press the RIGHT or LEFT Cursor keys to adjust the setting.
(Off to 300 ft, Off to 100 m; Default = Off)

NOTE: When i-Pilot Navigation is turned on, the Arrival Alarm in the Alarms tab is replaced by the Pre-Arrival Alarm, and the Off Course Alarm is replaced by the i-Pilot Off Course Alarm. See Enable i-Pilot Link Navigation for details.



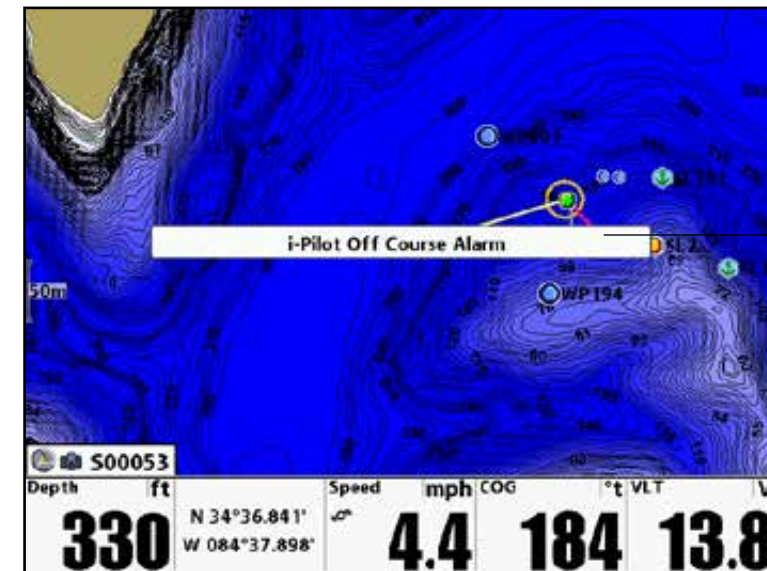
SET THE I-PILOT OFF COURSE ALARM

You can set how far the boat can move off course during i-Pilot Link navigation before an alarm is triggered. If the boat moves off course, an alert will display on the screen.

1. Main Menu: Press the MENU key twice.
2. Select the Accessories tab > i-Pilot > i-Pilot Off Course Alarm.
3. Press the RIGHT or LEFT Cursor keys to adjust the setting.
(Off to 300 ft, Off to 100 m; Default = Off)

NOTE: When i-Pilot Navigation is turned on, the Arrival Alarm in the Alarms tab is replaced by the Pre-Arrival Alarm, and the Off Course Alarm is replaced by the i-Pilot Off Course Alarm. See Enable i-Pilot Link Navigation for details.

i-Pilot Off Course Alarm Displayed



The i-Pilot Off Course alert displays on the screen.



MANUAL CONTROL FUNCTIONALITY

This section describes all Manual Control functions of i-Pilot Link. A manual function is one in which the operator takes full control of the function such as manually steering the motor in a desired direction or manually adjusting the prop speed to the desired setting.

How Do I... Turn the Motor On/Off?

Prop On/Off

To turn the motor on or off press

Refer to the Knowing your Remote section for details on the states of the prop icon.

How Do I... Control Motor Speed?

Motor Speed Control

Increase Motor Speed

To increase the motor speed push on the remote. Each push of will increment the motor speed by 1/2 to a maximum of 10.

Decrease Motor Speed

To decrease the motor speed push on the remote. Each push of will decrement the motor speed by 1/2 to a minimum of 0.

Preset Speeds

Pressing or will bring up the Speed Control screen. When this screen is active, the two Softkeys become presets for motor speed.

To recall a preset speed, bring up the Speed Control screen then press the Softkey for that speed.

To record a new preset speed, bring up the Speed Control screen, adjust the motor speed to the desired value then press and hold either Softkey until the label above the Softkey changes. The example to the right shows preset values of 6.5 and 10



How Do I... Steer the Motor?

Motor Steering Control

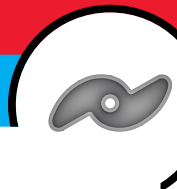
Steer Left

To steer the motor to the left press .

Steer right

To steer the motor to the right press .

If a steering key is held down for more than eight seconds, the steering will stop to prevent the coil cord from wrapping on the motor.



START OR STOP THE PROPELLER

1. Press the POWER/LIGHT key.
2. Select Prop > On or Off. To start the propeller spinning, select On. To stop the propeller, select Off.



ADJUST THE PROPELLER SPEED

The prop speed is established by the trolling motor, and the speed can be adjusted from the Fishfinder.

1. Press the POWER/LIGHT key.
2. Select Prop Speed.
3. Press the RIGHT or LEFT Cursor keys to adjust the speed setting (0 to 10).



UNDERSTANDING HOW THE I-PILOT LINK NAVIGATION WORKS

i-Pilot Link uses GPS satellite signals as well as digital compass data to know where it is, where it is heading and the direction the motor is pointing. Since i-Pilot Link depends on GPS satellite signals for navigation, a minimum GPS signal level of one bar is required in order for GPS navigation controls to be enabled. Best results are achieved when a GPS signal level of four bars can be obtained.

In simple terms, i-Pilot Link remembers and creates points to navigate your boat automatically. i-Pilot Link also uses a method of GPS navigation called arrival circles. These imaginary circles allow i-Pilot Link to understand when it has drifted away from a point and when it has arrived at a point. The size of the arrival circles vary depending on GPS signal strength, thus the greater the signal strength the smaller the arrival circles.

USING I-PILOT LINK WITH THE HUMMINBIRD FISHFINDER

The i-Pilot Link allows you to start navigation commands from the Humminbird Fishfinder and start navigation with the i-Pilot Link. The commands from the remote will also be displayed on the Fishfinder.

The i-Pilot Link features are displayed in Chart View and Bird's Eye View. The Fishfinder uses the data from the GPS Receiver attached directly to it or selected from the Ethernet network.

Some of the i-Pilot Link navigation functions may override traditional Humminbird navigation menu options. The alarms have also been adapted to the i-Pilot Link.

You will need the actions in this section throughout the manual.

Using Chart/Side Imaging View with the i-Pilot Link

Labels in the image:

- SideImagingView
- Chart View
- Spot-Lock Icon
- i-Pilot Link Icon indicates i-Pilot Link navigation is in progress (to the next waypoint in the route)
- Propeller Icon will spin when the i-Pilot Link prop is spinning

Depth	ft XTE	ft Speed	mph COG	TTG
51	3.27	4.4	317	0:25



OPEN THE CHART VIEW

The i-Pilot Link features and Navigation X-Press menu options are displayed in the Chart View and Bird's Eye View. To see all available i-Pilot Link navigation features, use the Chart View.

1. Press and hold the VIEW key.
2. Select Chart > Chart View.

CANCEL I-PILOT LINK NAVIGATION

When i-Pilot Link navigation is in progress, whether with an iTrack, Spot-Lock, route, etc., you can cancel navigation at any time using the following instructions. When you cancel i-Pilot Link navigation, be prepared to take manual control of the boat.

1. During i-Pilot Link Navigation, press the MENU key once.
2. Select Cancel i-Pilot Navigation, and press the RIGHT Cursor key.

From the remote:

1. Go to the Navigation Active Screen by pressing the GOTO key.
2. Select the Cancel Softkey.



RESUME NAVIGATION

If the i-Pilot Link is navigating a route, iTrack, or contour, and it pauses on a Spot-Lock, you can resume navigation using the following instructions.

1. Navigation X-Press Menu: Press the MENU key.
2. Select Resume Navigation, and press the RIGHT Cursor key.

NOTE: You may need to turn on the prop to start traveling (see Manual Control: Start or Stop the Propeller).



Resuming Navigation on a Route from a Spot-Lock

Boat Icon

i-Pilot Icon indicates i-Pilot Link navigation is in progress, and the next waypoint in the route is a Spot-Lock

Route with more than one Spot-Lock

Depth	ft XTE	ft Speed	mph COG	°t TTG
330	0.05	3.8	095	0:59



Open the Navigation X-Press Menu



Select Resume Navigation



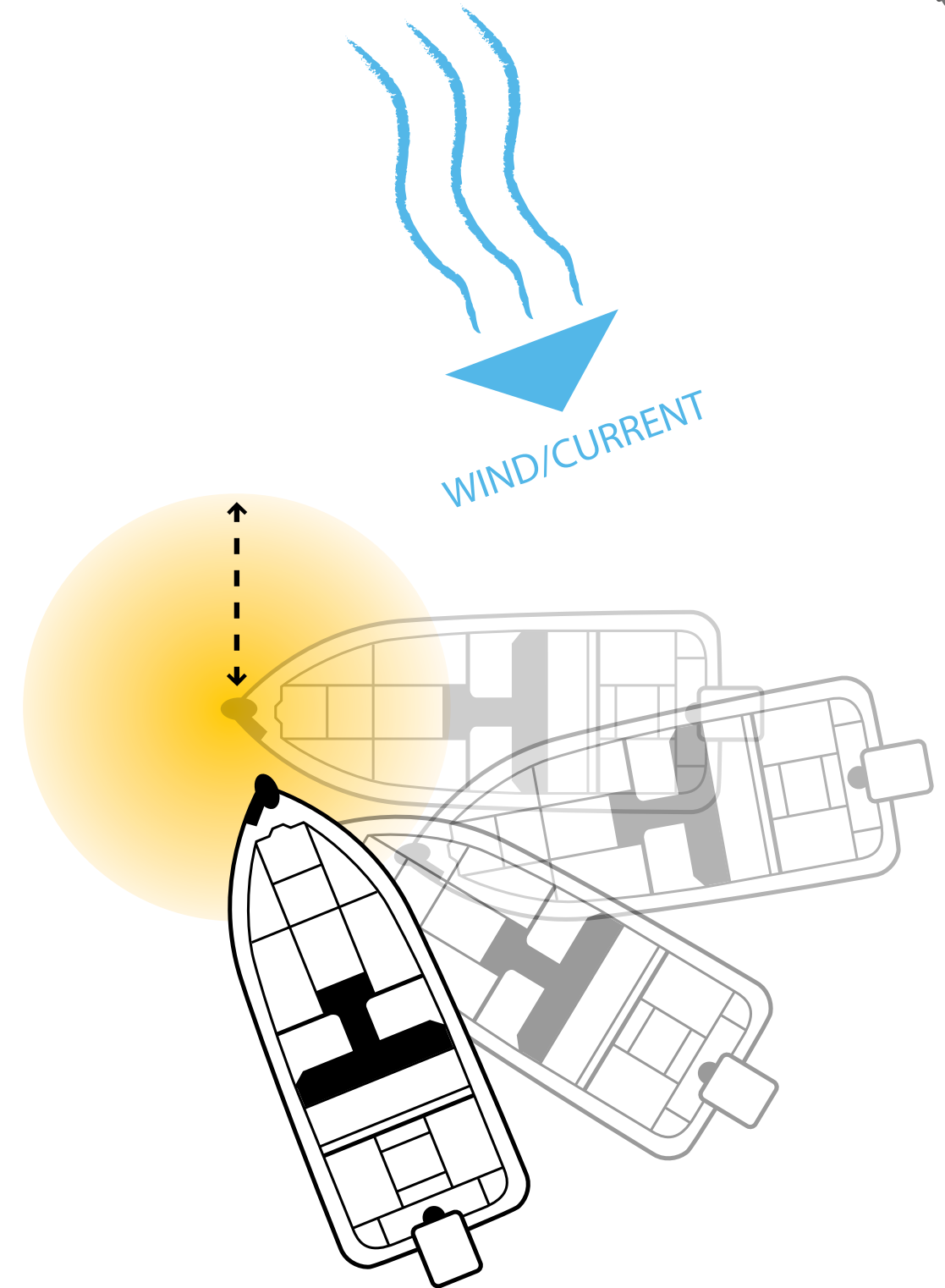
HOW SPOT-LOCK WORKS

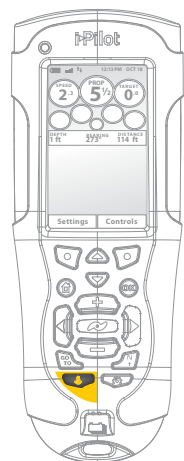
Spot-Lock uses a single point as a reference for the spot you want to stay on. Around the Spot-Lock location i-Pilot Link uses an arrival circle to determine prop speed and direction. If i-Pilot Link sees it is within the circle, it will adjust the motor speed to zero. If i-Pilot Link sees it is outside of the circle, it will control motor speed in an attempt to get the boat back into the circle.

You can save a combination of up to 2,750 Spot-Locks and Waypoints on your Humminbird or up to 16 on the Link Controller when operating without the Humminbird. Spot-Locks are saved with an alphanumeric name that can be edited on the Humminbird through the Navigation X-Press Menu or from the Waypoint Management dialog box.

Note: Link differentiates between a Spot-Lock and a Waypoint only by its icon. A Spot-Lock will have this icon: . Any Waypoint can be converted to a Spot-Lock by changing its icon to the Spot-Lock icon (see Manage your i-Pilot Link Navigation Data).

Spot-Lock can be operationally controlled with the i-Pilot Link remote or the Humminbird Fishfinder.





▶ ENGAGE SPOT-LOCK

1. Press on the remote.
2. This newly created Spot-Lock location is temporary. To save the location for later use, press the Save Softkey on the Spot-Lock Active Screen.



▶ DISENGAGE SPOT-LOCK

1. Press the Cancel Softkey on the Spot-Lock Active Screen OR any of the following keys: or .

NOTE: If you start another mode of iPilot navigation, Spot-Lock will disengage automatically.

▶ NAVIGATE TO A SAVED SPOT-LOCK

1. Manually navigate the boat to within a quarter mile of the saved Spot-Lock location.
2. Press the GOTO key.
3. Select the Spot-Lock from the list and press the OK key.

Be prepared for boat movement as the prop will automatically be enabled and the prop speed will automatically adjust to move the boat to the Spot-Lock location.

▶ SPOT-LOCK PAUSE

iPilot Link allows the user to temporarily engage Spot-Lock while navigating iTracks, Routes and LakeMaster Contour Lines.

1. To engage, press on the remote.
2. To cancel Spot-Lock Pause and resume the previous navigation mode, select: Home screen > Controls Softkey > Resume > OK



▶ ENGAGE SPOT-LOCK AT THE BOAT POSITION

You can quickly Spot-Lock at the current boat position. This type of Spot-Lock is temporary, and unless you save it, the Spot-Lock will be deleted when you start a new mode of navigation.

1. Navigation X-Press Menu: Press the MENU key.
2. Select Spot-Lock at Vessel, and press the RIGHT Cursor key. Spot-Lock will start immediately.
3. Press the EXIT key until the Navigation X-Press Menu is closed.
4. Save (optional): Press the MENU key. Select Save Spot-Lock, and press the RIGHT Cursor key.

NOTE: The Save Spot-Lock menu option is available on the Navigation X-Press Menu when Spot-Lock is active.

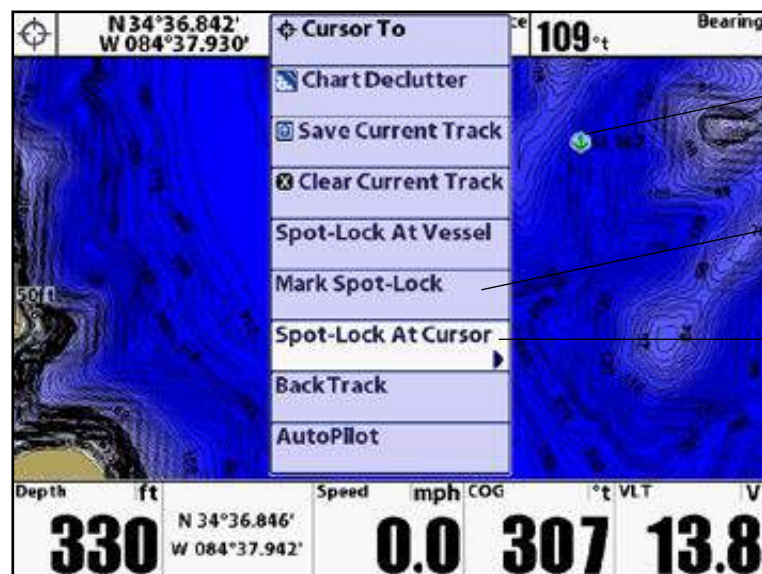
▶ MARK A SPOT-LOCK AT THE CURSOR POSITION

You can use the cursor to mark a Spot-Lock location. The Spot-Lock will be saved automatically to the Fishfinder. This menu option marks the Spot-Lock, but it does not start navigation to the Spot-Lock. To start navigation, see *Mark a Spot-Lock and Start Navigation*.

1. Use the 4-WAY Cursor Control key to move the cursor to a position on the chart.
2. Navigation X-Press Menu: Press the MENU key.
3. Select Mark Spot-Lock, and press the RIGHT Cursor key.
4. Press the EXIT key until the Navigation X-Press Menu is closed.



Marking a Spot-Lock at the Cursor Position



Spot-Lock Icon

To mark the Spot-Lock at the boat position, select Mark Spot-Lock.

To mark the Spot-Lock at the cursor position, select Spot-Lock at Cursor.



Move the Cursor



Open the Navigation X-Press Menu



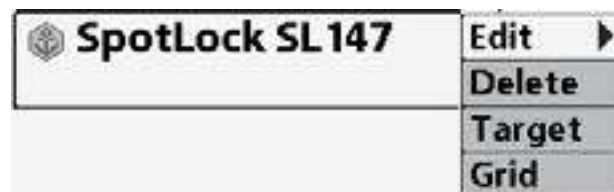
Select a Menu Option

MARK A SPOT-LOCK AND START NAVIGATION

You can mark a Spot-Lock at the cursor location and start navigation towards it automatically. When the boat reaches the point, it will Spot-Lock until you disengage it. This type of Spot-Lock is temporary.

1. Use the 4-WAY Cursor Control key to move the cursor to a position on the chart.
2. Navigation X-Press Menu: Press the MENU key.
3. Select Spot-Lock at Cursor, and press the RIGHT Cursor key. Navigation will start automatically.

When you save a Spot-Lock, it is saved with an alphanumeric name that starts with SL. The name can be edited from the Spot-Lock submenu or the Waypoint Management dialog box. If you change the Spot-Lock icon, the position will change to a waypoint.



ENGAGE SPOT-LOCK AT A WAYPOINT POSITION

1. Use the 4-WAY Cursor Control key to move the cursor to a waypoint on the chart.
2. Navigation X-Press Menu: Press the MENU key.
3. Select the Waypoint name > Spot-Lock. If the waypoint is within a ¼ mile, i-Pilot Link navigation will start towards the waypoint. When the boat arrives at the waypoint, Spot-Lock will start automatically.



NAVIGATE TO A SAVED SPOT-LOCK

If a saved Spot-Lock is within ¼ mile of the boat position, you can start navigation towards it. Spot-Lock will start automatically when the boat reaches the destination Spot-Lock.

1. Use the 4-WAY Cursor Control key to select a Spot-Lock icon on the chart.
 2. Press the GOTO key.
- OR
1. Without the active cursor, press the GOTO key.
 2. Select a Spot-Lock (SL) from the saved points list.
 3. Press the RIGHT Cursor key.



DISENGAGE SPOT-LOCK

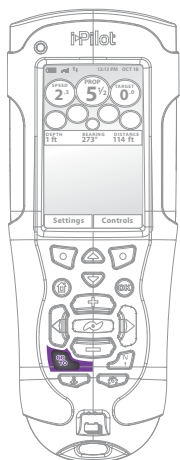
You can disengage Spot-Lock navigation using the Cancel i-Pilot Navigation menu option. When you cancel i-Pilot Link navigation, be prepared to take manual control of the boat.

1. Navigation X-Press Menu: Press the MENU key.
2. Select Cancel i-Pilot Navigation, and press the RIGHT Cursor key.

NOTE: If you start another mode of i-Pilot Link navigation, the Spot-Lock will disengage automatically.

HOW WAYPOINT NAVIGATION WORKS

Waypoints are stored positions that allow you to mark areas of interest or navigation points. Your Fishfinder can save a combination of up to 2,750 Waypoints and Spot-Locks.



▶ MARK A WAYPOINT

1. To create a Waypoint at the boat's position, press and hold the Spot-Lock key. This Waypoint will be saved on the Humminbird.

▶ NAVIGATE TO A SAVED WAYPOINT

1. Manually navigate the boat to within a quarter mile of the Waypoint location.
2. Press the GOTO key.
3. Select the Waypoint from the list and press the OK key.

▶ DISENGAGE NAVIGATION TO A WAYPOINT

1. Press the Cancel Softkey on the GOTO Waypoint Active Screen OR press one of the steering keys.

NOTE: If you start another mode of i-Pilot Link navigation, Navigate to Waypoint will disengage automatically.



MARK A WAYPOINT

1. Press the VIEW key until a Chart View is displayed on the screen.
2. A waypoint can be marked as follows:

To save the waypoint at the boat's position, press the MARK key.

To save a waypoint at the cursor position, use the 4-WAY Cursor Control key to move the cursor to a position on the Chart View. Then, press the MARK key.



NAVIGATE TO A SAVED WAYPOINT

If a saved waypoint is within ¼ mile of the boat position, you can start i-Pilot Link navigation towards it.

1. From the Chart View, press the GOTO key.
2. Select a waypoint from the list, and press the RIGHT Cursor key.

OR

1. Use the 4-WAY Cursor Control key to select a waypoint or position on the chart.
2. Press the GOTO key.

If you've selected a waypoint, navigation will start automatically.

If you've selected a position, select Go To Position from the submenu, and press the RIGHT Cursor key.



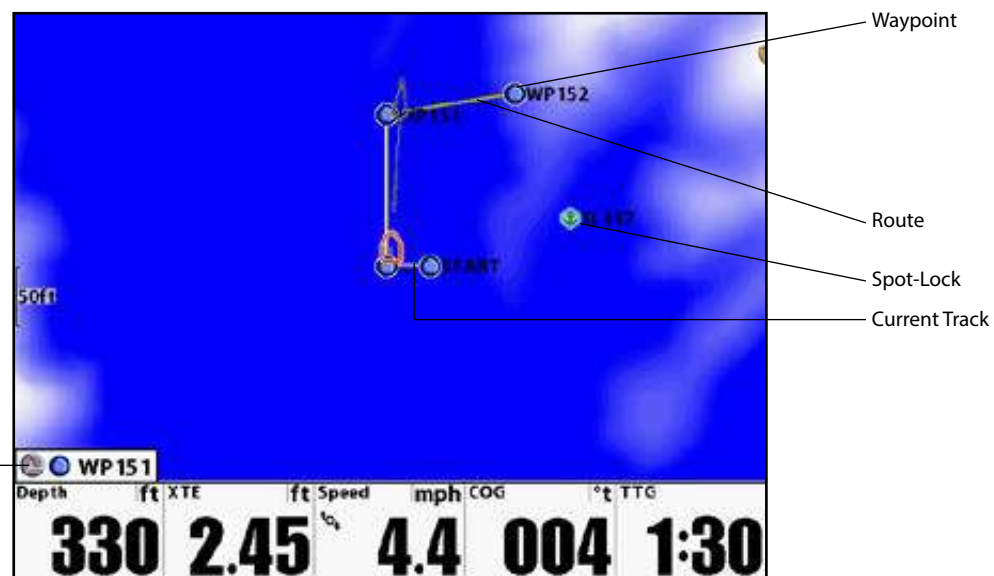
NAVIGATE TO THE MOST RECENTLY CREATED WAYPOINT

1. Navigation X-Press Menu: Press the MENU key.
2. Select the Waypoint name (WP), and press the RIGHT Cursor key to open the submenu.
3. Select Go To, and press the RIGHT Cursor key to start navigation.

NOTE: Waypoints are saved with an alphanumeric name that starts with WP. The name can be edited and managed in the Waypoint Management dialog box (see Manage your i-Pilot Link Navigation Data).



Chart View with Waypoints, Routes, and Tracks



i-Pilot Link icon indicates i-Pilot Link navigation is in progress



Move the Cursor



Mark a Waypoint

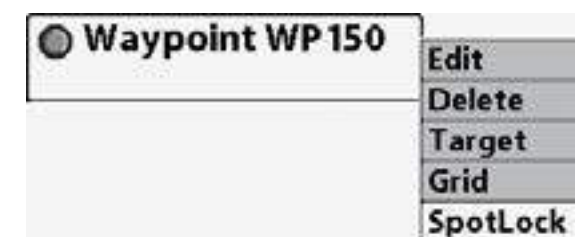


Start Navigation



ENGAGE SPOT-LOCK AT A WAYPOINT POSITION

1. Use the 4-WAY Cursor Control key to move the cursor to a waypoint on the chart.
2. Navigation X-Press Menu: Press the MENU key.
3. Select the Waypoint name > Spot-Lock. If the waypoint is within a ¼ mile, i-Pilot Link navigation will start towards the waypoint. When the boat arrives at the waypoint, Spot-Lock will start automatically.



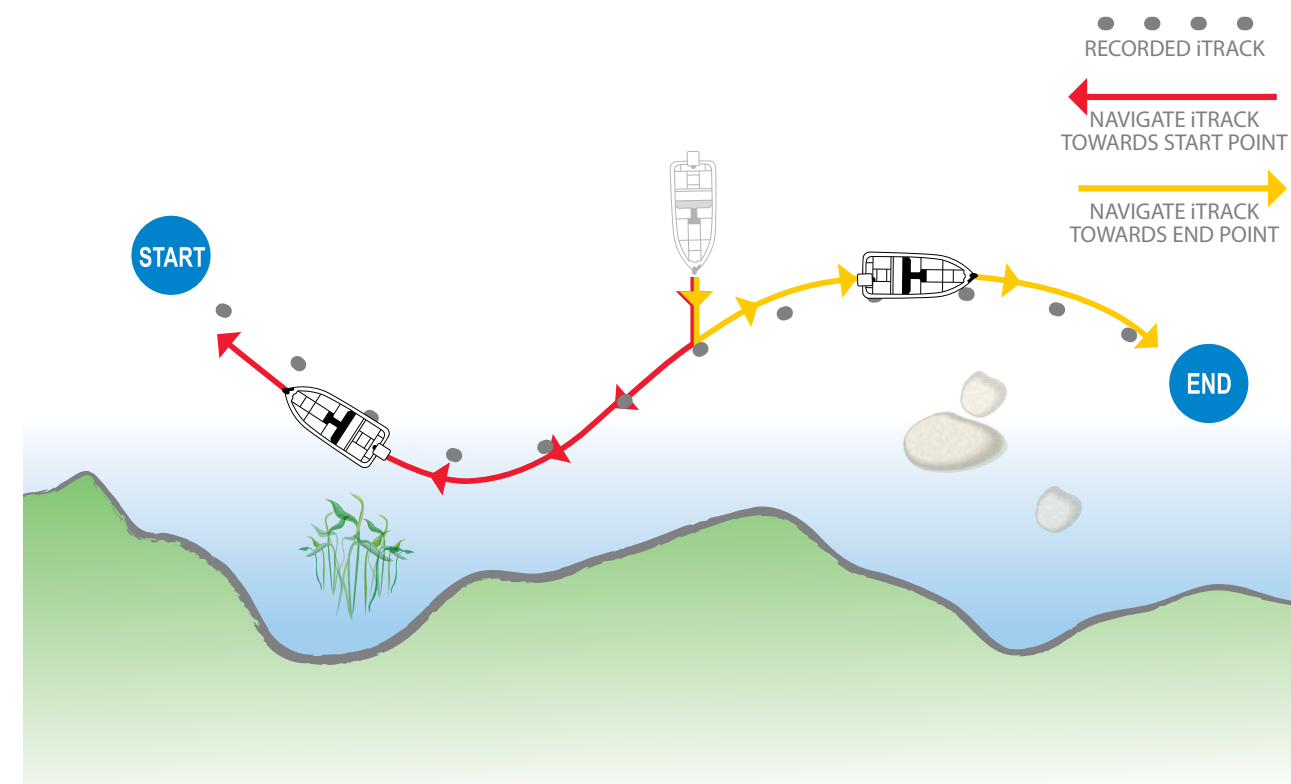
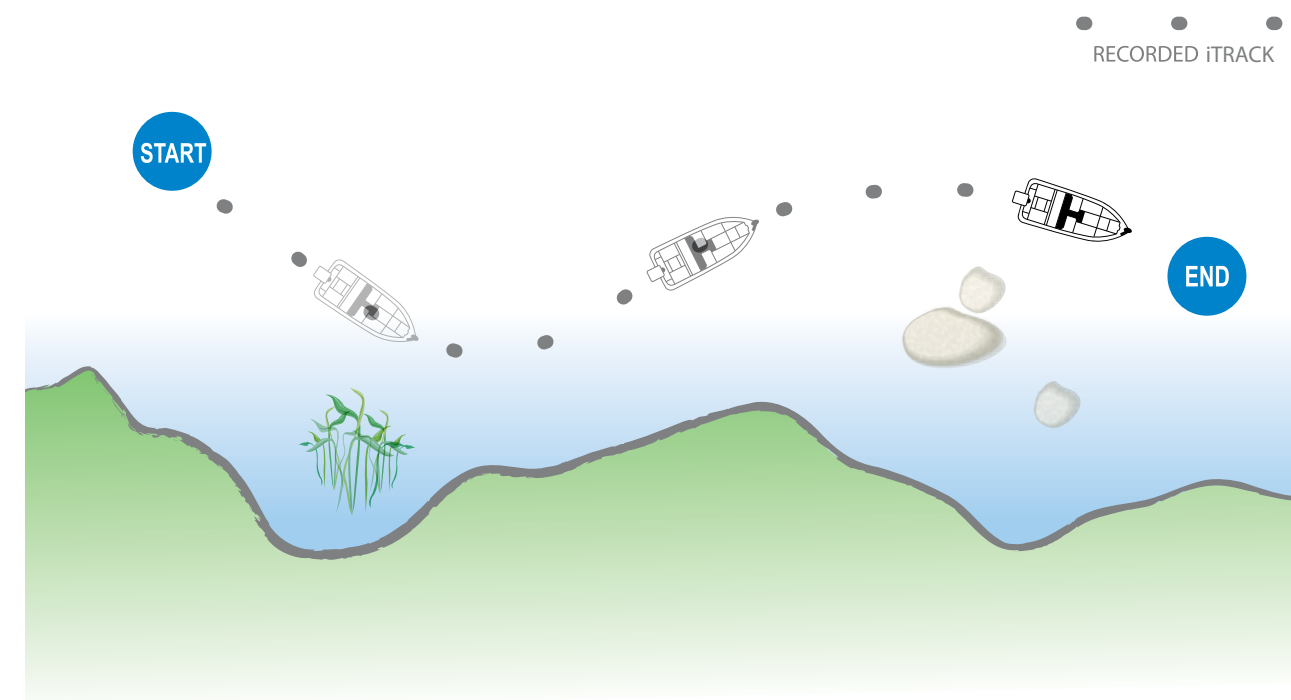


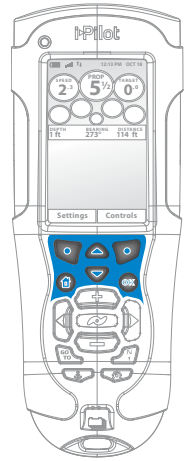
HOW ITRACK RECORDING AND NAVIGATION WORK

When the recording of an iTrack is initiated, i-Pilot Link starts to record GPS position data in the form of track points. The distance between these points varies based on the speed of the boat and the GPS signal strength. The very first track point recorded is called the Start. The last point recorded is called the End. i-Pilot Link sees a recorded iTrack as a series of these track points. When Navigate to Start or Navigate to End is initiated, Link will navigate to the nearest track point. Once this nearest track point is reached, it will then follow the track points in sequence back to either the Start or End based on which mode was selected. Once the end or start track point is reached, Link automatically cancels the iTrack navigation. The user can choose to have Link transition to other modes by configuring the Arrival Mode.

iTracks can be recorded for a distance of up to 2 miles. You can save up to 50 iTracks on your Humminbird or up to 16 on the Link controller when operating without the Humminbird. iTracks are saved with an alphanumeric name that can be edited on the Humminbird through the Navigation X-Press Menu or from the Waypoint Management dialog box. You can also edit the iTrack appearance and whether or not it is visible on the Fishfinder Chart View.

During iTrack navigation, Link takes control over all steering functions; speed can be manually controlled or the Cruise Control function can also be used. The motor speed must be set high enough in order to stay on the iTrack given wind, current and other external forces.





▶ RECORDING AN ITRACK

1. To begin recording, select Home > Controls > Record > OK
2. To stop the recording, press the StopRec Softkey on the iTrack Active Screen.

OR

1. Select Home > Controls Softkey > Stop Record > OK
 - a. The user will then be prompted to Save or Discard the recorded iTrack.



▶ NAVIGATE AN ITRACK

1. Manually navigate the boat to within a quarter mile of any point on the iTrack.
2. Press the GOTO key
3. Select the iTrack from the list and press either the ToStart or ToEnd Softkey to indicate the desired direction of travel and to initiate navigation.



▶ REVERSE DIRECTION

1. During navigation of an iTrack, the direction of travel (To End, To Start) can be reversed by pressing: Home > Controls > Reverse > OK

▶ DISENGAGE ITRACK NAVIGATION

1. Press the Cancel Softkey on the Navigate iTrack Active Screen OR press one of the steering keys.

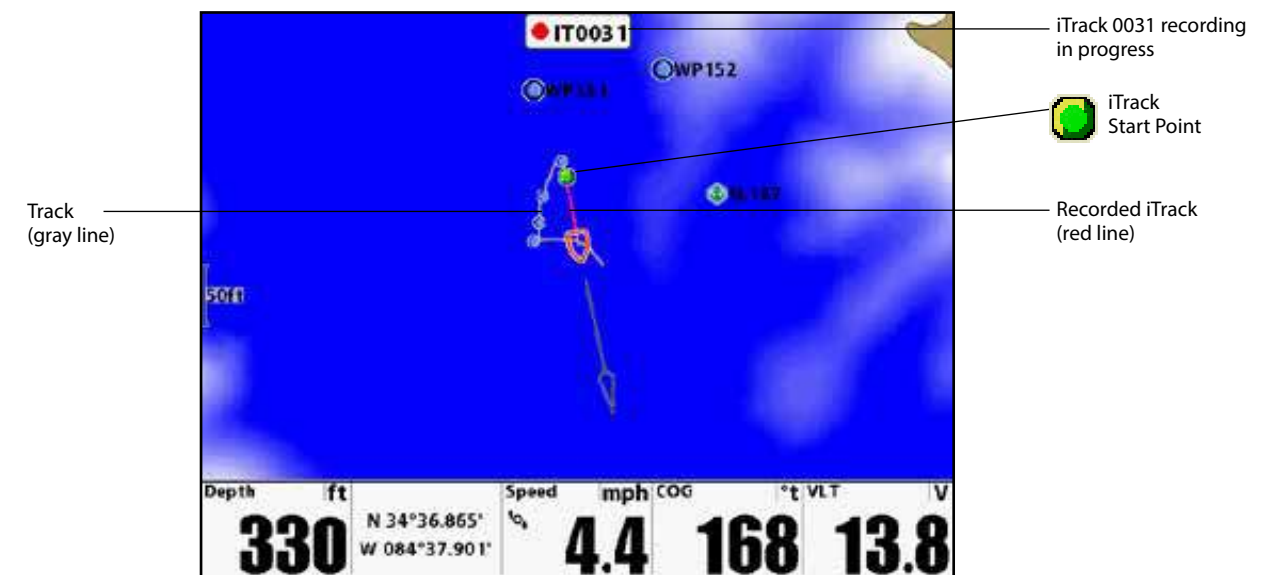
NOTE: If you start another mode of i-Pilot Link navigation, Navigate iTrack will disengage automatically. The exception is Spot-Lock which if this is engaged, iTrack navigation will be paused, not disengaged.



▶ RECORD AN ITRACK

1. Main Menu: Press the MENU key twice.
2. Select the Accessories tab.
3. Select Record iTrack, and press the RIGHT Cursor key.
4. Press the EXIT key until the menu system is closed. As you navigate, the iTrack Recording Icon will flash on the screen periodically to indicate that a recording is in progress.

Recording an iTrack



▶ STOP RECORDING

1. Press the MENU key.
2. Select Stop Recording iTrack, and press the RIGHT Cursor key. Follow the on-screen instructions to save or discard the iTrack.

NOTE: When you save an iTrack, it is saved with an alphanumeric name that starts with IT. The name can be edited from the Waypoint Management dialog box (see Manage your i-Pilot Link Navigation Data).



SELECT AND NAVIGATE A SAVED ITRACK

If a saved iTrack is within ¼ mile of the boat position, you can start navigation towards it. iTrack navigation will start towards the nearest point on the iTrack, and then it will navigate to the Start Point or End Point, depending on your selection. If you select Go To Position, the Fishfinder will mark a waypoint and start i-Pilot Link navigation towards it.

1. Use the 4-WAY Cursor Control key to select a Start Point icon, End Point icon, or a position on the iTrack.
2. Press the GOTO key.
3. Use the 4-WAY Cursor Control key to select one of the submenu actions:
 - To start navigation to the iTrack Start Point, select Navigate to Start.
 - To start navigation to the iTrack End Point, select Navigate to End.
 - To start navigation to a point within the iTrack, select Go To Position.

NOTE: When you select Go To Position, the i-Pilot Link will navigate to the cursor position, but it will not start navigation on the iTrack.



NAVIGATE A SAVED ITRACK FROM THE GO TO LIST

1. Press the GOTO key.
2. Select an iTrack Start or iTrack End from the Go To list. Press the RIGHT Cursor key.



REVERSE DIRECTION DURING ITRACK NAVIGATION

If you are navigating a saved iTrack, you can quickly change the navigation direction toward the Start Point or End Point. For example, if the i-Pilot Link is navigating to the Start Point, selecting Reverse Navigation will start i-Pilot Link navigation in the opposite direction, towards the End Point.

1. During iTrack navigation, press the MENU key once.
2. Select Reverse Navigation, and press the RIGHT Cursor key.



DELETE A SAVED ITRACK

1. Use the 4-WAY Cursor Control key to move the cursor to a Start Point or End Point on the iTrack.
2. Navigation X-Press Menu: Press the MENU key once.
3. Select the iTrack name, and press the RIGHT Cursor key.
4. Select Delete, and press the RIGHT Cursor key.

NOTE: You can also delete iTracks from the Waypoint Management dialog box (see Manage your i-Pilot Link Navigation Data).



Selecting a Saved iTrack from the Go To List

Go To List

Select Point to Go To

Sort By Name

- IT003 1 to start
- IT003 1 to end
- S00027
- S00029
- S00030
- S00039
- S00046
- S00049

Depth ft 330 Speed mph 0.0 COG 307 VLT 13.8

N 34°36.846' W 084°37.942'

GOTO

Open the Go To List

Select a Saved iTrack

Starts navigation to the nearest iTrack point and finishes at the Start Point

Starts navigation to the nearest iTrack point and finishes at the End Point

Navigating to the End Point

Track (gray line)

iTrack Start Point (the closest point on the iTrack)

Arrival Circle (see Set the Pre-Arrival Alarm)

iTrack End Point

iTrack

The yellow line indicates the projected course.

IT0068

Depth ft 202 Speed mph 4.4 VMG 1.5 VLT 13.8

N 34°36.841' W 084°37.898'



HOW BACKTRACK WORKS

Traditional Humminbird tracks consist of detailed position history and are displayed as a breadcrumb trail of trackpoints. The Current Track shows the position history since the unit was powered up. You can clear the Current Track or save it at any time. The Current Track represents your actual path so far.

BackTrack allows you to navigate the Current Track as a recorded iTrack. When BackTrack is selected, the i-Pilot Link will mark a Start Point at the boat's current position, and it will create an iTrack on top of the Current Track, up to 2 miles.

BACKTRACK

To use BackTrack, the Fishfinder must be actively tracking. Once BackTrack navigation starts, you can also use iTrack functions, including Reverse (see the *iTracks* section for more information).

NOTE: You can activate BackTrack on the Current Track. BackTrack is not available on saved Humminbird tracks.

1. Navigation X-Press Menu: Press the Menu key.
2. Select BackTrack, and press the RIGHT Cursor key.

NOTE: If BackTrack is not displayed in the Navigation X-Press Menu, select Main Menu > Current Track > Start Tracking. BackTrack is not available when Follow the Contour is active.



BackTrack Applies an iTrack to the Current Track

When you select BackTrack, the iTrack Start Point begins at the boat position.

BackTrack (The yellow line shows the projected course.)

iTrack End Point

IT0033	Depth	ft	Speed	mph	COG	°t	VLT	V
	330		4.4	142	13.8			
	N 34°36.841'		W 084°37.898'					

HOW FOLLOW THE CONTOUR WORKS (Chart View Only, i-Pilot Compatible LakeMaster Chart Card Required)

Follow the Contour allows you to navigate a contour on a LakeMaster chart. When you start i-Pilot Link navigation to Follow the Contour, all other types of navigation are stopped on the Fishfinder and the Ethernet network.

NOTE: When the i-Pilot Link is following the contour, the Current Track is not saved, and iTracks cannot be recorded.

NOTE: Initiation of Follow the Contour is done through the Humminbird.



SET UP FOLLOW THE CONTOUR

To use Follow the Contour, an i-Pilot compatible LakeMaster chart card must be installed, and the Contour Lines must be set to Visible.

1. Install a LakeMaster chart card into the SD card slot.
2. Main Menu: Press the MENU key twice.
3. Select the Chart tab > Contour Lines > Visible.
4. Press the EXIT key until the menu system is closed.
5. Press and hold the VIEW key.
6. Select Chart View, and press the RIGHT Cursor key.

START FOLLOW THE CONTOUR NAVIGATION

You can start i-Pilot Link navigation if the boat position is within ¼ mile of the selected contour.

1. Use the 4-WAY Cursor Control key to move the cursor to a contour line.
2. Press the GOTO key.
3. Select Follow the Contour, and select a navigation direction from the submenu.

The navigation direction will be previewed in orange or blue on the Chart View. See the illustration *Starting Follow the Contour Navigation*.

NOTE: To quickly reverse the direction of Follow the Contour navigation, press the MENU key once, and select Reverse Navigation from the Navigation X-Press Menu.



Starting Follow the Contour Navigation

Submenu

Navigation Option 1 (orange)

Navigation Option 2 (blue)

Navigation Option 1 (previewed in orange)

Cursor selecting a contour

Navigation Option 2 (previewed in blue)

Contour Line(s)

Boat Icon (idle)

Depth ft: 330, Speed mph: 0.0, COG: 185, VLT: 13.8



Move the Cursor



Open the Contour Submenu



Select a Menu Option

Following the Contour

Projected Course (displayed in yellow when Follow the Contour is active)

Boat Icon (navigating)

i-Pilot Link Icon indicates i-Pilot Link navigation is in progress

Depth ft: 330, DIST: 46.02 ft, Speed mph: 4.4, COG: 271, TTC: ---

Propeller Icon will spin when the i-Pilot Link prop is spinning



SET THE CONTOUR OFFSET

If you don't want to navigate on the contour line, you can set a distance from the contour so that navigation will be offset from the selected contour.

1. Use the 4-WAY Cursor Control key to move the cursor to a contour line.
2. Press the GOTO key.
3. Select Follow the Contour, and select Contour Offset from the submenu.
4. Press the RIGHT or LEFT Cursor keys to set the offset. (-300 to +300 feet [-91 to +91 m], where -300 = shallowest side of the contour and +300 feet = deepest side of the contour; Default = 0)
5. Press the UP or DOWN Cursor keys to select a navigation direction. The navigation direction will be previewed in orange or blue on the Chart View. See the illustration *Starting Follow the Contour Navigation*.



SET THE CONTOUR OFFSET DURING NAVIGATION

The Contour Offset can also be adjusted while Follow the Contour navigation is in progress.

1. During Follow the Contour navigation, press the MENU key once.
2. Select Contour Offset from the Navigation X-Press Menu.
3. Press the RIGHT or LEFT Cursor keys to set the offset. (-300 to +300 feet [-91 to +91 m], where -300 = shallowest side of the contour and +300 feet = deepest side of the contour; Default = 0)

NOTE: To remove the offset, set the Contour Offset setting to 0.



▶ REVERSE DIRECTION

1. During navigation of a contour, the direction of travel can be reversed by pressing: Home > Controls > Reverse > OK

▶ DISENGAGE CONTOUR NAVIGATION

1. Press the Cancel Softkey on the Navigate Contour Active Screen OR press one of the steering keys.

NOTE: If you start another mode of i-Pilot Link navigation, Navigate Contour will disengage automatically. The exception is Spot-Lock which if this is engaged, Contour navigation will be paused, not disengaged.



HOW ROUTE NAVIGATION WORKS

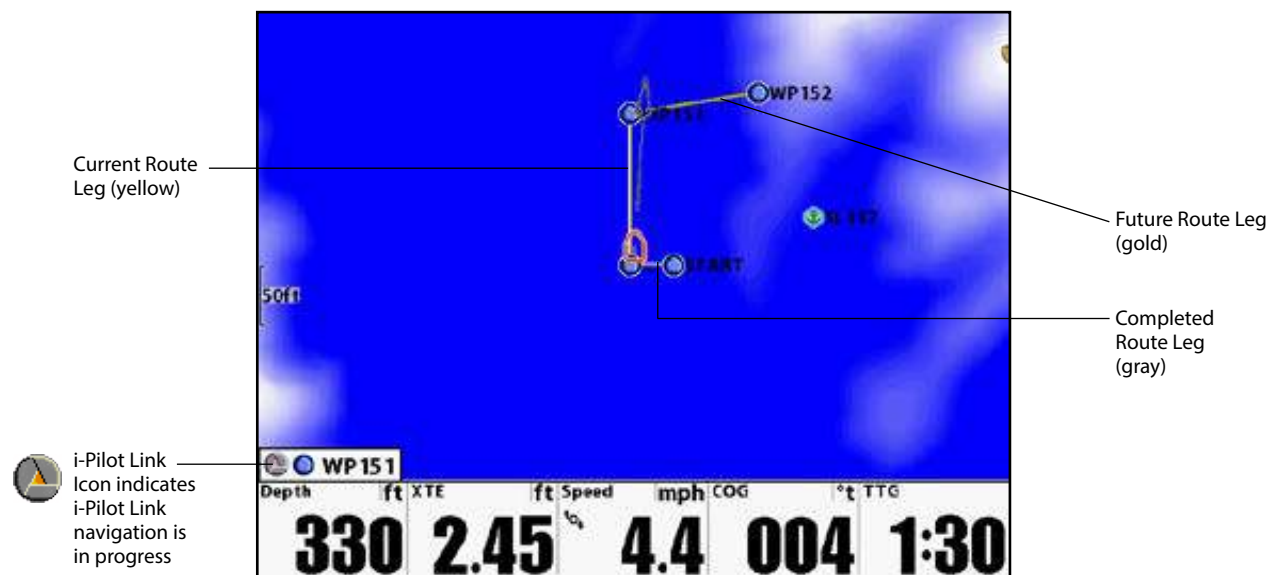
Routes link two or more waypoints together to create a path for navigation and are used in trip planning. Your Fishfinder can store up to 45 routes that can each contain up to 50 waypoints. A route represents your intended navigation and shows the shortest path from each waypoint to the next. As you travel a route, staying on the route line is the most efficient way to get to your destination, although you should always look out for obstacles not shown on the chart.

A Route Leg is the path between each waypoint in a route. The color of each route leg is displayed as follows:

- Completed Route Leg = Gray
- Current Route Leg = Yellow
- Future Route Leg = Gold

i-Pilot Link navigation can start on the route if the boat position is within ¼ mile of the first waypoint in the route.

Navigating a Route



NOTE: When the i-Pilot Link is navigating and reaches a Spot-Lock, it will engage the Spot-Lock. To resume navigation on the route, select Resume Navigation from the Navigation X-Press Menu. See GPS Motor Control: Resume Navigation for more information.



CREATE A ROUTE

1. In a Chart View, use the 4-WAY Cursor Control key to select a waypoint, Spot-Lock, or position on the chart.
2. Press the GOTO key.
3. To add more waypoints or Spot-Locks to the route, repeat steps 1 and 2.

NOTE: If the position you select is also a Contour Line, a submenu will open with related menu options. To add the position to the route, select Go To Position.

SAVE THE CURRENT ROUTE

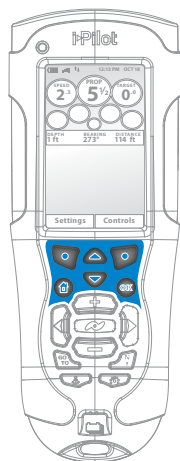
1. While navigating in a Chart View, press the MENU key once.
2. Select Save Current Route. Press the RIGHT Cursor key and follow the on-screen prompts to confirm.

NAVIGATE A SAVED ROUTE

You can select a saved route from the Waypoint Management dialog box. The i-Pilot Link will navigate the route in forward or reverse, depending on your selection.

NOTE: For more information about the Waypoint Management dialog box, see Manage your i-Pilot Link Navigation Data or download the Humminbird Waypoint Management Guide from our Web site at humminbird.com.

1. Main Menu: Press the MENU key twice.
2. Select the Navigation tab > Waypoints, Routes, Tracks. Press the RIGHT Cursor key to open the Waypoint Management dialog box.
3. Press the UP or DOWN Cursor keys to choose a route, and press the RIGHT Cursor key to open the submenu.
4. Select Travel > Forward or Reverse.



NOTE: Initiation of Route navigation is done through the Humminbird.

▶ DISENGAGE ROUTE NAVIGATION

1. Press the Cancel Softkey on the Navigate Route Active Screen OR press one of the steering keys.

NOTE: If you start another mode of iPilot navigation, Navigate Route will disengage automatically. The exception is Spot-Lock which if this is engaged, Route navigation will be paused, not disengaged.



HOW AUTOPILOT WORKS

Two different versions of AutoPilot are available Advanced AutoPilot and Legacy AutoPilot. There are distinct differences between the two AutoPilots and how they control your boat.

Advanced AutoPilot

Advanced AutoPilot not only uses compass heading but also GPS signal data to correct for cross winds, current and other external forces to keep the boat on a straight line. When Advanced AutoPilot is turned on, it generates a set of GPS points in a straight track line in the heading direction. i-Pilot Link now navigates to each individual point on this track line. When the user steers to a new heading, a new track line of GPS points are laid down in the new heading direction.

Legacy AutoPilot

Legacy AutoPilot uses an internal compass to provide heading lock. When Legacy AutoPilot is on, it keeps the motor pointed in the same compass direction. If a manual steering correction is made, Legacy AutoPilot locks onto the new compass heading to which the boat was steered. This method of heading tracking does not take into account external forces such as side winds or currents, which can allow side drift.

Which AutoPilot Do I Use and When?

With all the external variables, this question can be difficult to answer. Both AutoPilots have their benefits based on the type of fishing and bait presentation desired.

Advanced AutoPilot will keep the boat on a true straight path in most conditions. When very extreme conditions exist such as very strong winds or current, the trolling motor may not have enough power to control the boat smoothly. In these extreme cases it may be best to use Legacy AutoPilot and let the boat move with the wind or current if the motor is not powerful enough to overcome it.

Legacy AutoPilot helps you maintain a constant heading but does not compensate for wind or currents.

Both Advanced AutoPilot and Legacy AutoPilot are valuable tools the fisherman can use for accurate and precise bait presentation. We highly recommend getting on the water and trying both Advanced AutoPilot and Legacy AutoPilot in various fishing situations and applications. With experimentation and time you will find which AutoPilot works best for you in a given situation.

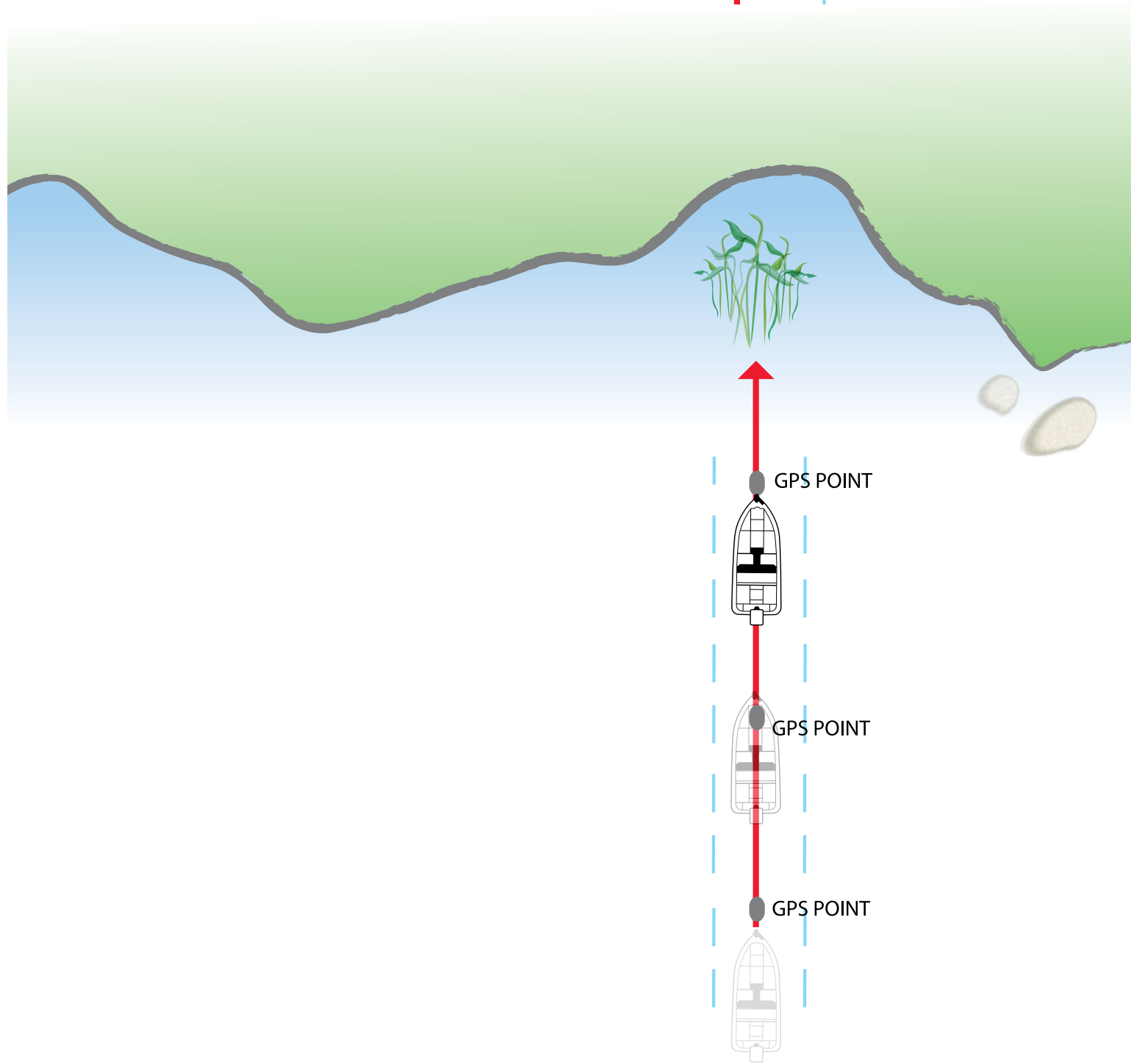
Using AutoPilot with Other i-Pilot Link Functions

AutoPilot can be used in combination with Cruise Control and while recording an iTrack. If another mode of navigation that controls steering is enabled while AutoPilot is enabled, AutoPilot will disable automatically.



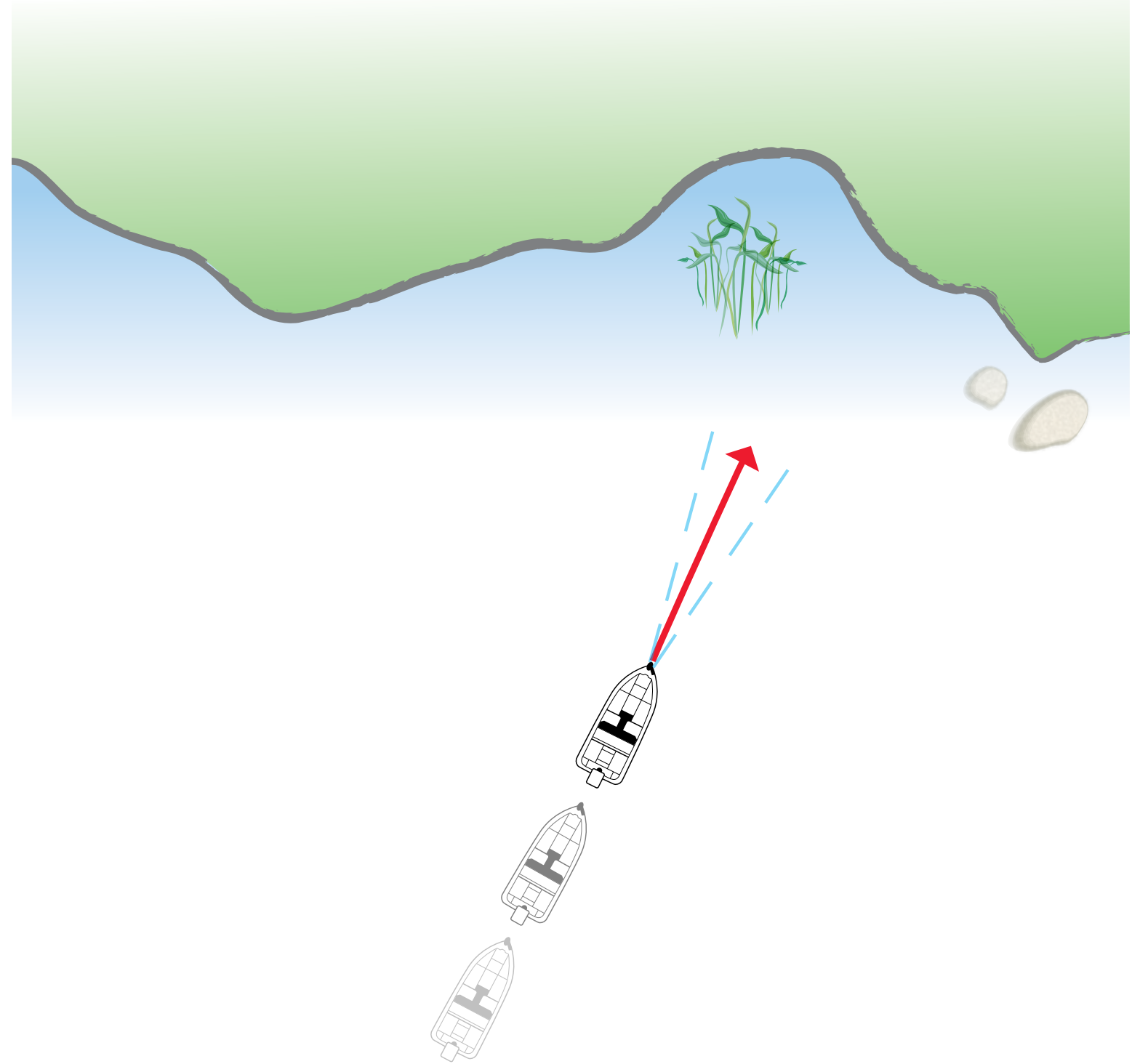
ADVANCED AUTOPILOT HEADING

POSSIBLE DEVIATION DUE TO WIND/CURRENT



LEGACY AUTOPILOT HEADING

POSSIBLE DEVIATION DUE TO WIND/CURRENT








SELECTING AUTOPILOT MODES

The user can choose between Advanced AutoPilot and Legacy AutoPilot either from the remote or from the Humminbird.

From the Remote:

Home > Controls Softkey > AutoPilot Mode

▶ ENGAGING AUTOPILOT

1. To engage AutoPilot, press the AutoPilot key .
2. To adjust the desired heading, use the steering keys  to point the motor in the new direction and Link will lock onto the new heading. 

▶ DISENGAGING AUTOPILOT

1. Press the AutoPilot key.

NOTE: If you start another mode of iPilot navigation, AutoPilot will disengage automatically.



From the Humminbird:

SET THE AUTOPILOT MODE

1. Main Menu: Press the MENU key twice.
2. Select the Accessories tab > iPilot > AutoPilot Mode.
3. Press the RIGHT or LEFT Cursor keys to select Legacy or Advanced. (Default = Advanced)



The blue icon is displayed on the Chart View when Legacy AutoPilot Mode is active.



The yellow icon is displayed on the Chart View when Advanced AutoPilot Mode is active.

START AUTOPILOT TOWARDS THE CURSOR POSITION

Use the cursor to set the heading for AutoPilot navigation. iPilot Link will start navigation and maintain a constant heading towards the cursor position.


1. Use the 4-WAY Cursor Control key to move the cursor to a position on the chart.
2. Navigation X-Press Menu: Press the MENU key.
3. Select AutoPilot, and press the RIGHT Cursor key.

START AUTOPILOT BASED ON THE MOTOR'S HEADING

When you start AutoPilot navigation without an active cursor, the heading will be based on the trolling motor's heading. AutoPilot continues to navigate the boat in the same direction.

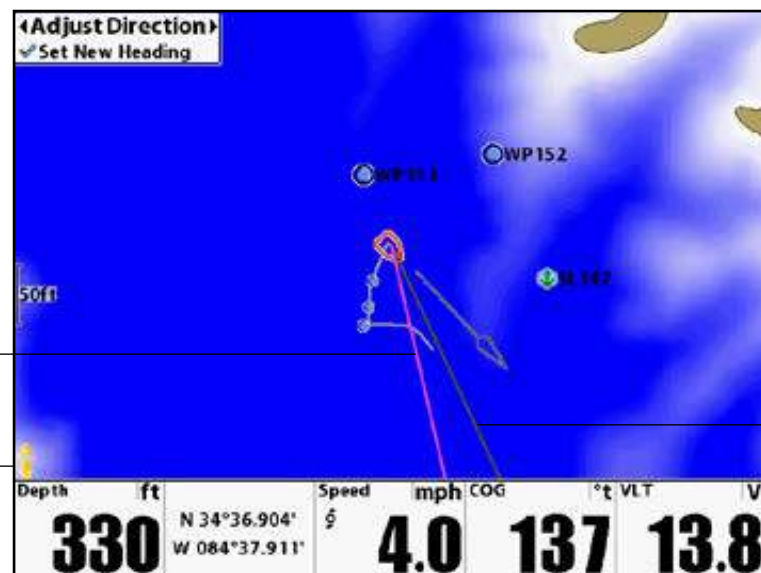
1. Navigation X-Press Menu: Press the MENU key.
2. Select AutoPilot, and press the RIGHT Cursor key.

ADJUST THE HEADING

1. Navigation X-Press Menu: Press the MENU key.
2. Select AutoPilot Adjust, and press the RIGHT Cursor key.
3. Adjust: Press the RIGHT or LEFT Cursor keys.
4. Confirm: Press the  CHECK/INFO key.



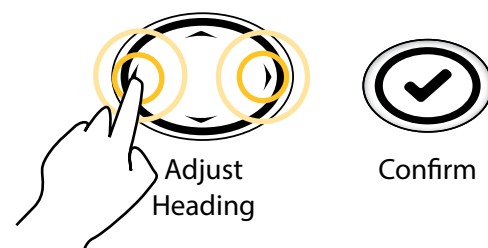
Adjusting the AutoPilot Heading



Adjustment Preview Line (purple)

The yellow AutoPilot icon indicates AutoPilot Mode is set to Advanced.

The AutoPilot Heading Line can be turned on or off.



DISPLAY OR HIDE THE AUTOPILOT HEADING LINE

1. Main Menu: Press the MENU key twice.
2. Select the Accessories tab > i-Pilot > AutoPilot Heading Line.
3. Press the RIGHT or LEFT Cursor keys to select On or Off. (Default = On)

CANCEL AUTOPILOT NAVIGATION

1. Navigation X-Press Menu: Press the MENU key.
2. Select Cancel AutoPilot, and press the RIGHT Cursor key.

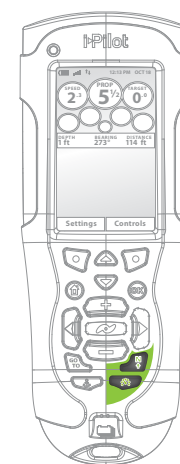


HOW CRUISE CONTROL WORKS

i-Pilot Link's Cruise Control automatically sets the prop speed to maintain constant GPS speed. Because this controls only the prop speed, Cruise Control can be used in conjunction AutoPilot and iTrack Record as well as with navigating iTracks, LakeMaster contour lines, routes, and waypoints.

Cruise Control is interfaced only through the remote.

CAUTION! When Cruise Control is engaged, the prop will automatically be enabled if it is not already enabled.



▶ ENGAGING CRUISE CONTROL

1. Press to bring up the Cruise Control panel.
2. Using and , adjust the Target Speed and press OK to accept the Target Speed and engage Cruise Control.

▶ DISENGAGE CRUISE CONTROL

1. Press or or to bring up the Cruise Control panel.
2. Press the Cancel Softkey.

▶ ADJUSTING TARGET SPEED WITH CRUISE CONTROL ENGAGED

1. Press or or to bring up the Cruise Control panel.
2. Using and , adjust the Target Speed and press OK to accept the Target Speed.

▶ CRUISE CONTROL PRESET SPEED

1. Press or or to bring up the Cruise Control panel.
2. Press the left-side Softkey to adjust the Target Speed to match the current preset value shown in the Softkey Label.
3. To adjust the preset value:
 - a. Press or or to bring up the Cruise Control panel.
 - b. Using and , adjust the Target Speed.
 - c. Press and hold the left Softkey until the Softkey Label changes to match the Target Speed value.



MANAGE YOUR I-PILOT LINK NAVIGATION DATA

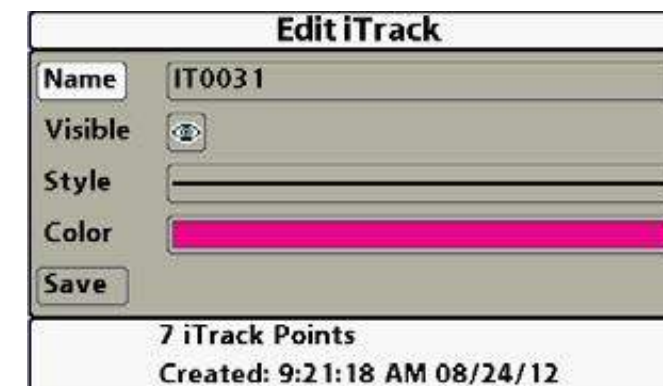
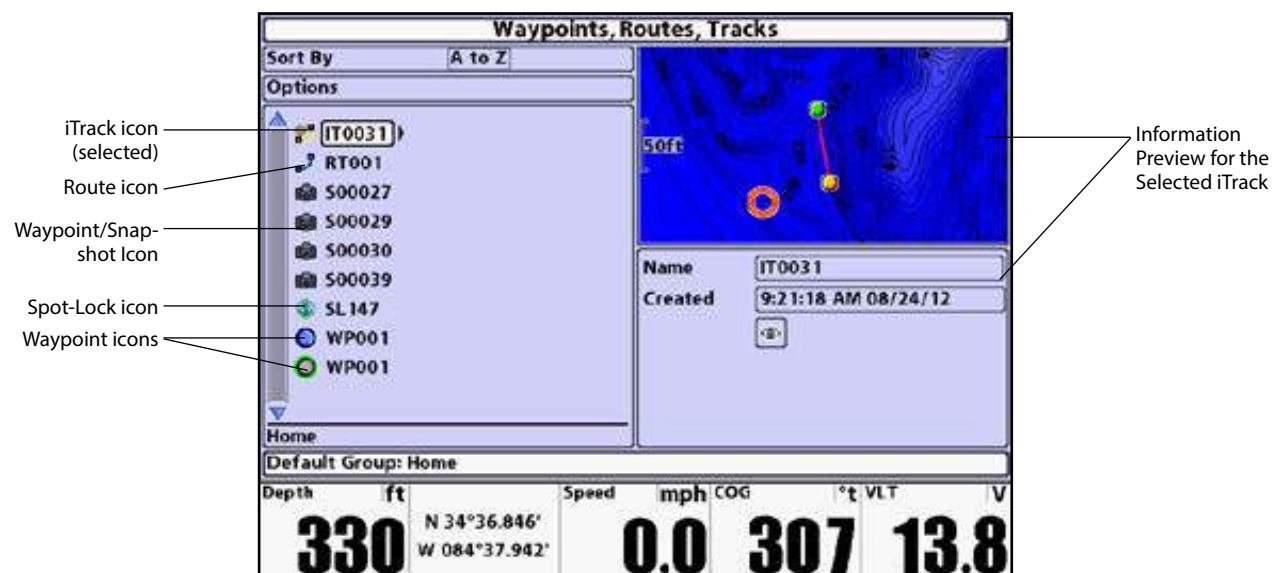
You can edit iTracks and Spot-Locks in the Waypoint Management dialog box in the same way that you can edit other Humminbird navigation data. You can also create new iTracks and Spot-Locks, and you can start navigation to the selected item.

The features that are unique to i-Pilot Link are described in this section. To understand how to use the Waypoint Management dialog box, see your Waypoint Management Guide for details. Visit our Web site at humminbird.com to download the Waypoint Management Guide.

OPEN THE WAYPOINT MANAGEMENT DIALOG BOX

1. Main Menu: Press the MENU key twice.
2. Select the Navigation tab > Waypoints, Routes, Tracks.

Waypoint Management Dialog Box



EDIT AN ITRACK OR A SPOT-LOCK

1. Select a Spot-Lock or iTrack, and press the RIGHT Cursor key.
2. Select Edit from the submenu, and press the RIGHT Cursor key.
3. Use the 4-WAY Cursor Control key to move from field to field, and press the UP or DOWN Cursor keys to change the settings. The available fields will be determined by the item you are editing.

Name: Press the RIGHT or LEFT Cursor keys to move from space to space, and press the UP or DOWN Cursor keys to set the letter or number. All upper and lower case letters are available, as well as digits 0-9 and some punctuation symbols.

Icon Category: Press the UP or DOWN Cursor keys to scroll through the available categories. Select All to view all available icons. (All, Geometry, Alerts, Supplies, Navigation, Recreation, Fish, Environment)

Icon: Press the UP or DOWN Cursor keys to scroll through the available icons used to represent the selected waypoint in Chart Views. The available icons are determined by the category selected in Icon Category.

Shared: Press the UP or DOWN Cursor keys to set the selected item to shared or locked on the Humminbird Ethernet Network.

Visible: Press the UP or DOWN Cursor keys to set the selected item to visible or hidden in the Chart Views.

Latitude/Longitude: Press the RIGHT or LEFT Cursor keys to move from space to space, and press the UP or DOWN Cursor keys to set the letter or number.

4. Select Save, and press the RIGHT Cursor key to confirm your changes.



CAUTION! If you change the Spot-Lock icon, it will change to a waypoint and lose its Spot-Lock capabilities. However, you can change a waypoint back to a Spot-Lock by changing the Waypoint icon to a Spot-Lock icon.



WARNING! Humminbird is not responsible for the loss of data files (waypoints, routes, tracks, groups, snapshots, recordings, etc.) that may occur due to direct or indirect damage to the unit's hardware or software. It is important to back up your Fishfinder's data files periodically. Data files should also be saved to your PC before restoring the unit's defaults or updating the software. See your Humminbird online account at humminbird.com and the Waypoint Management guide.



EXPORT TO THE I-PILOT

Saved iTracks, waypoints, and Spot-Locks can be exported to the i-Pilot. When they are exported, they are copied to the i-Pilot.

The exported data will overwrite the data on the i-Pilot.

1. Main Menu: Press the MENU key twice.
2. Select the Navigation tab > Waypoints, Routes, Tracks. Press the RIGHT Cursor key to open the Waypoint Management dialog box.
3. Select Options > Select Multiple and... > Export to i-Pilot.
4. Select Items: Press the UP or DOWN Cursor keys to scroll through the navigation data. Press the RIGHT Cursor key to select an item. Repeat as needed.
5. Confirm Export: When you are finished selecting items, press the EXIT key to select Export Selected to i-Pilot. Press the RIGHT Cursor key, and follow the on-screen instructions to confirm or cancel the export.

NOTE: To import and share navigation data between the i-Pilot and the Fishfinder, see i-Pilot Setup: Upload Data from the i-Pilot Link.



EXPORT TO AN SD CARD

Your saved iTracks and Spot-Locks should be backed up periodically along with your other navigation data (waypoints, routes, tracks). Export your navigation items to an unlocked, installed SD card, and they can also be managed in HumminbirdPC. See your Waypoint Management Guide for details.

NOTE: An SD Card must be purchased separately.

Export ALL Navigation Items

You can export all of your navigation items to an installed, unlocked SD card.

1. Main Menu: Press the MENU key twice.
2. Select the Navigation tab > Waypoints, Routes, Tracks. Press the RIGHT Cursor key to open the Waypoint Management dialog box.
3. Select Options > Select All and... > Export.
4. Follow the on-screen instructions to confirm or cancel the export.

Export Selected Navigation Items

You can also select specific navigation items and export them to an installed, unlocked SD Card.

1. Main Menu: Press the MENU key twice.
2. Select the Navigation tab > Waypoints, Routes, Tracks. Press the RIGHT Cursor key to open the Waypoint Management dialog box.
3. From a selected group directory in the Waypoint Management dialog box, select Options > Select Multiple and... > Export.
4. Select Items: Press the UP or DOWN Cursor keys to scroll through the navigation data. Press the RIGHT Cursor key to select an item. Repeat as needed.
5. Confirm Export: When you are finished selecting items, press the EXIT key to select Export Selected. Press the RIGHT Cursor key, and follow the on-screen instructions to confirm or cancel the export.

FREQUENTLY ASKED QUESTIONS

- Q. Does i-Pilot Link record the speed I am traveling when recording a iTrack?
- A. No. i-Pilot Link only records its location during track record. It is up to the user to set the desired speed manually or with Cruise Control.
- Q. Why doesn't my GPS Signal Strength icon always show all four bars?
- A. GPS signal strength is impacted by many influences including: i-Pilot Link controller having a clear view of the sky (especially to the southern sky), boat being located alongside a high bank and your geographic location.
- Q. Is i-Pilot Link compatible with CoPilot?
- A. No. None of the components between the two systems are compatible with each other.
- Q. Does the remote float?
- A. Yes.
- Q. How long of an iTrack can I record?
- A. Each individual can be up to two miles in length.
- Q. Can I use multiple remotes with my i-Pilot Link?
- A. Yes, you can use up to four remotes simultaneously. Remember to learn each new remote to the i-Pilot Link controller.
- Q. Why does the LCD screen of the remote have dark blotches on it when I wear my sunglasses?
- A. Polarized sunglasses can dramatically affect the way an LCD looks to the human eye.
- Q. Where can I purchase additional remotes?
- A. Your local Minn Kota retailer should carry additional remotes.
- Q. If I turn off the remote, will i-Pilot Link continue to operate?
- A. Yes. The i-Pilot Link Controller will continue in its current state of operation until the user makes a change either with the remote, Humminbird or foot pedal (Terrova only).

- Q. Does i-Pilot Link help to keep the coil cord from wrapping around the motor shaft?
- A. Yes and no. When in Spot-Lock, i-Pilot Link keeps track of how far it has rotated in either direction. If a new correction will cause the coil cord to wrap, it will rotate in the opposite direction in order to prevent the wrapping. In all other modes, it is up to the user to monitor the coil cord and to rotate the motor accordingly to avoid wrapping.
- Q. Does my i-Pilot remote work with i-Pilot Link?
- A. No
- Q. Will i-Pilot Link control my motor without the Humminbird connected?
- A. Yes. However, your storage for iTracks and Spot-Locks will be limited to what can be stored in the Link controller.
- Q. When in Follow the Contour mode, my Humminbird stops recording the Current Track. Why is that?
- A. This is to protect the proprietary mapping data contained in the LakeMaster chip.
- Q. Where is the navigational data such as iTracks, Spot-Locks, Waypoints and routes stored?
- A. When connected to the Humminbird, this data is stored on the Humminbird. When not connected, newly created iTracks and Spot-Locks are stored in the Link controller.

TROUBLESHOOTING

General Troubleshooting

- Problem:** The motor is making erratic steering corrections while in AutoPilot, Spot-Lock or Track to Start/End.
- Solution:** Be sure to keep all ferrous metallic objects away from the i-Pilot Link controller as they will have an impact on the built-in compass. Such objects include: anchors, metal framework, etc.
- Problem:** When a key on the remote is pressed the motor doesn't always respond.
- Solutions:** Check the status of the battery charge icon on the remote. If low, connect the charger to the remote. Check for large obstructions between the remote and the motor.
- Solution:** If the Lock icon is present on the content area of the LCD, the keypad is locked. Press and hold one of the Softkeys to unlock the keypad.
- Problem:** i-Pilot Link won't let me turn on certain features like: Advanced AutoPilot, Record, Track to Start/End or Spot-Lock.
- Solution:** Verify that the GPS Signal Strength icon on the LCD shows at least one bar. If there are no bars, i-Pilot Link will not allow these GPS-based features to be enabled.
- Problem:** There is a message on the remote screen showing "Motor not Found". Also, the keys on the remote are not controlling the motor.
- Solution:** This message is due to the remote not having wireless communications with the Link controller. This could be due to the motor not being powered up or the remote not being learned to the controller.
- Solution:** Check power to the motor and learn the remote to the controller (see Remote Learning on page 33).
- Problem:** There is a message on the remote screen showing "Motor Error". Also, the keys on the remote are not controlling the motor.
- Solution:** This error is generated when the Link controller loses communications with the Terrova (or ST) motor controller. This error will occur any time the software on the Link controller is updated. To clear the error, cycle power to the motor.

Remote

- Problem:** I'm having a hard time seeing the content on the LCD screen.
- Solution:** With the type of LCD used on the remote, it is able to utilize ambient light to enhance the visibility of the screen content. However, when in indirect or low light conditions, the backlight may be needed. Through the Backlight Settings Menu, you can adjust the intensity of the backlight along with the amount of time it stays on after a button press.
- Problem:** I connected the charging cable but the charging indicator does not come on.
- Solution:** Ensure the power (USB) end is receiving power from the AC adapter or the alternate power source you may be using such as the vehicle power port.
- Solution:** Look inside the charging port on the bottom end of the remote. You should clearly see two metallic contacts. Use an appropriate tool to clean out any debris that may have accumulated in the charging port.
- Solution:** The end of the remote that plugs into the remote includes two spring pins. Ensure the pins are clean and that when pushed in, they spring back out.

Spot-Lock

- Problem:** The boat doesn't seem to keep close enough to the recorded Spot-Lock location.
- Solution:** Verify the trolling motor batteries are sufficiently charged
- Solution:** Check for weeds on the prop.
- Solution:** In more extreme wind and current conditions, the boat will tend to stabilize a little ways down wind from the intended location. Relock the location the same distance upwind and expect that the boat will drift some in the downwind direction.

Cruise Control

- Problem:** The GPS speed displayed on the remote is different than what my other GPS system shows.
- Solution:** If you are using Cruise Control with Advanced AutoPilot or iTrack Navigation, i-Pilot Link calculates the actual speed in the intended direction of travel which may differ from your GPS reported speed.
- Problem:** Cruise Control isn't holding the target speed close enough.
- Solution:** Verify the trolling motor batteries are sufficiently charged.

AutoPilot

- Problem:** When in Advanced AutoPilot in strong winds, there is quite a bit of back and forth movement in the boat.
- Solution:** While Advanced AutoPilot will keep your boat on a true heading, it may be at the expense of the boat having to continuously move to get back on the correct course. In these extreme conditions you may be better off using Legacy AutoPilot and correcting for the wind manually.
- Problem:** Under AutoPilot Mode, I have Advanced selected as the default mode. However, when I engage AutoPilot, it goes into Legacy AutoPilot instead of Advanced.
- Solution:** If the GPS signal strength icon shown no bars, then Link will automatically engage Legacy AutoPilot regardless of the Mode selected. Wait for your GPS signal strength to reach at least one bar, then re-engage AutoPilot.

Track Record and Playback

- Problem:** While navigating an iTrack the propeller suddenly stopped.
- Solution:** Verify you did not accidentally enable another automatic feature such as AutoPilot or Spot-Lock.
- Solution:** You may have the Arrival Mode set to OFF.
- Problem:** While recording an iTrack, the recording suddenly stopped.
- Solution:** You may have reached the two mile limit for recording an iTrack.

PowerDrive V2 /Riptide SP:

- Problem:** Steering does not work properly or at all.
- Solution:** Verify that the steering wires from the i-Pilot Link cable are properly connected directly to the black and white wires coming from the steering housing.

GLOSSARY

Accessory Connector: The accessory connector is a small sealed connector used on the Terrova and Riptide ST family of motors. This connector allows for easy waterproof installation of any Minn Kota Terrova and Riptide ST accessories.

Center Housing: A plastic center housing exists in the center of the trolling motor mount. This center housing covers and protects mechanical and electrical components from the environment. The center housing is temporarily removed from PowerDrive V2 and Riptide SP motors during i-Pilot Link installation.

CoPilot: Co-Pilot is a wireless motor control accessory from Minn Kota available for all Terrova, PowerDrive V2, Riptide ST and Riptide SP lines of motors. The accessory allows for wireless adjustment of all basic motor control functions. The Co-Pilot accessory must be removed from a PowerDrive V2 and Riptide SP motor upon i-Pilot Link installation. Any Co-Pilot accessory installed on a Terrova or Riptide ST motor is electrically disabled once i-Pilot Link is installed.

Control Box Cover: The control box cover is a plastic cover installed on the top head of the motor. The cover protects the inner wiring and electronics from the environment. This part is replaced by the i-Pilot Link controller.

GPS: GPS is an acronym for Global Positioning System. GPS provides accurate position (latitude, longitude, altitude) information virtually anywhere on the earth through satellite technology and personal receivers on the ground. A series of geosynchronous satellites broadcast a unique signal toward the earth once per second. A GPS receiver, which is used in i-Pilot Link, receives the signals from these satellites and is able to determine position based on very slight differences in the time each signal is received and the receiver's knowledge of the location of each of the satellites.

GPSSpeed: The speed calculated by measuring the boat's change in geographical location over a given time using GPS data.

i-Pilot Link Controller: The i-Pilot Link controller is part of the i-Pilot Link system. The controller contains a GPS receiver, compass and electronics to automatically navigate the trolling motor. The controller resembles a motor control box cover and is completely sealed and waterproof. The controller replaces the existing control box cover and AutoPilot controller if one is present.

PowerDrive V2: The PowerDrive V2 is in the latest family of bow-mount, electric-steer trolling motors from Minn Kota. The motor can be identified by the PowerDrive V2 name on the side of the trolling motor mount.

Prop Speed: The speed that the prop is rotating from 0 to 10, which is adjustable in ½ increments.

Riptide SP: The Riptide SP is in the latest family of saltwater bow-mount, electric-steer trolling motors from Minn Kota. The motor can be identified by the Riptide SP name on the side of the trolling motor mount.

Riptide ST: The Riptide ST is in the latest family of saltwater bow-mount, electric-steer trolling motors from Minn Kota. The motor can be identified by the Riptide ST name on the side of the trolling motor mount.

Side Plates: Side plates exist on each side of the trolling motor mount. These side plates cover and protect mechanical and electrical components from the environment. The side plates are temporarily removed from PowerDrive V2 and Riptide SP motors during i-Pilot Link installation.

Terrova: The Terrova is in the latest family of bow-mount, electric-steer trolling motors from Minn Kota. The motor can be identified by the Terrova name on the side of the trolling motor mount.

Track End: The last point on a recorded iTrack, which is made when Track Recording was ended.

Track Start: The first point on a recorded iTrack, which is made when the Track Record key is pressed to start a recording.

COMPLIANCE STATEMENTS



ENVIRONMENTAL COMPLIANCE STATEMENT:

It is the intention of Johnson Outdoors Inc. to be a responsible corporate citizen, operating in compliance with known and applicable environmental regulations and a good neighbor in the communities where we make or sell our products.

WEEE Directive:

EU Directive 2002/96/EC "Waste of Electrical and Electronic Equipment Directive (WEEE)" impacts most distributors, sellers and manufacturers of consumer electronics in the European Union. The WEEE Directive requires the producer of consumer electronics to take responsibility for the management of waste from their products to achieve environmentally responsible disposal during the product life cycle. WEEE compliance may not be required in your location for electrical and electronic equipment (EEE), nor may it be required for EEE designed and intended as fixed or temporary installation in transportation vehicles such as automobiles, aircraft and boats. In some European Union member states, these vehicles are considered outside of the scope of the Directive, and EEE for those applications can be considered excluded from the WEEE Directive requirement. This symbol (WEEE wheeled bin) on product indicates the product must not be disposed of with other household refuse. It must be disposed of and collected for recycling and recovery of waste EEE. Johnson Outdoors Inc. will mark all EEE products in accordance with the WEEE Directive. It is our goal to comply in the collection, treatment, recovery and environmentally sound disposal of those products; however, these requirements do vary within European Union member states. For more information about where you should dispose of your waste equipment for recycling and recovery and/or your European Union member state requirements, please contact your dealer or distributor from which your product was purchased.

APPLICANT: JOHNSON OUTDOORS, INC.

MODEL NUMBER	DESCRIPTION
1866450	i-PILOT LINK REMOTE
1866400	i-PILOT LINK SYSTEM, TERROVA
1866405	i-PILOT LINK SYSTEM, ST
1866410	i-PILOT LINK SYSTEM, PD V2
1866415	i-PILOT LINK SYSTEM, SP

FCC ID:

Remote T62-IPREM20
Controller T62-IPCON20

Industry Canada ID:

Remote 4397A-IPREM20
Controller 4397A-IPCON20

The FCC and IC label for the remote can be found inside the remote battery compartment.

The FCC and IC label for the controller can be found on the underside of the controller.

FCC and Industry Canada Compliance Statement:

This device complies with FCC Rules Part 15 and Industry Canada RSS-210. Operation is subject to the following two conditions: (1) This device may not cause harmful interference (2) This device must accept any interference, including interference that may cause undesired operation of the device

Le présent appareil est conforme aux CNR d'Industrie Canada applicables aux appareils radio exempts de licence. L'exploitation est autorisée aux deux conditions suivantes: (1) l'appareil ne doit pas produire de brouillage, et (2) l'utilisateur de l'appareil doit accepter tout brouillage radioélectrique subi, même si le brouillage est susceptible d'en compromettre le fonctionnement

The radiated output power of the controller is well below the FCC radio frequency exposure limits. The controller should be operated at a minimum distance of 20 cm from a person's body.

Minn Kota and i-Pilot Link are registered trademarks of
Johnson Outdoors Marine Electronics, Inc.



minnkotamotors.com

MINN KOTA CONSUMER
& TECHNICAL SERVICE

P.O. Box 8129
Mankato, MN 56002

121 Power Drive
Mankato, MN 56001
Phone (800) 227-6433
Fax (800) 527-4464

