

Hanse 418 – Sales manual

12.07.2017

Pascal Kuhn



Hanse 
BREAKING RULES . SETTING TRENDS

315 NEW349 NEW388 NEW418 455 505 NEW549 575 588 675

<https://www.boat-manuals.com/hanse/>

www.hanseyachts.com

Highlights

Highlights

- Fast Cruising -

- ▶ Judel / Vrolijk & CO designed hull for optimized performance, stability and balance of the vessel
- ▶ High rig and large sail area for a stunning performance
- ▶ Various keel options to match sailing area and performance
- ▶ ELVSTRÖM CZ Crossover sail - with CX endless furler and storage bag
- ▶ Gennaker for maximum downwind performance



Highlights

- Easy Sailing -

- ▶ Easy sailing concept with all functions operable from the helm position with one set of winches only
- ▶ Deckslayout and coachroof design ensuring optimum view when helming the vessel
- ▶ Twin wheel steering with optional chart plotter at cockpit table
- ▶ Mainsheet on coachroof to allow maximum comfort in cockpit
- ▶ Self-tacking jib for easy manouvering
- ▶ Manual furling systems for easy handling of sails (furling rig optional)
- ▶ Optional secondary winches on coaming for optimum sail trim



Highlights

- Innovative design -

- ▶ Sleek and elegant Hanse exterior profile
- ▶ New „Hanse family look“ - interior and exterior – Design, materials and quality throughout the whole fleet
- ▶ Modern Hanse furniture design with island birth in standard master cabin
- ▶ New decks design with large saloon glass „window“ at companion way with optional openable hatches and 5 openable deck hatches overall in standard
- ▶ Featuring a manual bathing platform with optional swimming stair for improved access to the sea
- ▶ Three deck cockpit lockers and one anchor locker at bow



Highlights

- Individual customization -

- ▶ Various cabin versions featuring an island birth in the master cabin to meet the clients wishes
- ▶ Various wood and fabric choices for interior and exterior
- ▶ Several canvas and canopy options
- ▶ Innovative swimming stair allowing easy access to the sea
- ▶ Optional GRP cockpit table with integrated optional chart plotter
- ▶ TV and entertainment options



Concept

Concept – Rig and Sails

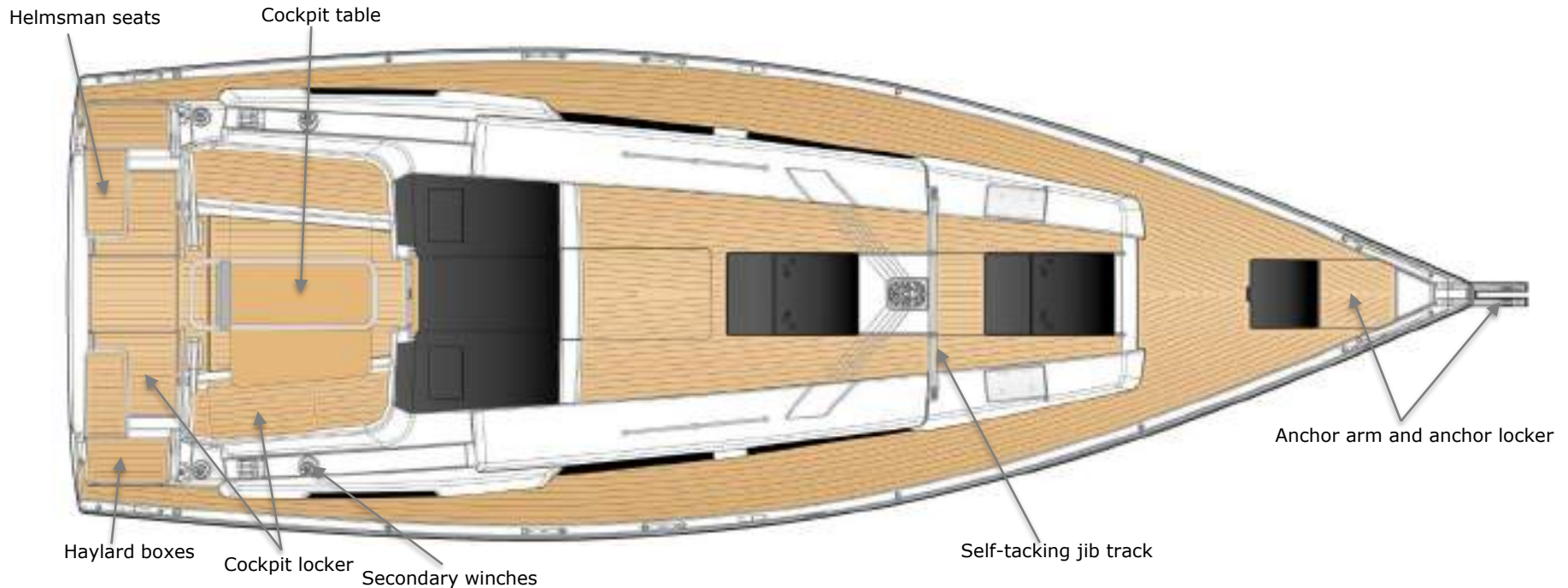


The enormous sail plan makes the Hanse 418 being one of the best performing vessels of its class. Due to the excellent aero- and hydrodynamic concept of Judel / Vrolijk & CO - featuring the Hanse „Crossover“ sail attached to the anchor arm and a huge Gennaker - she is in combination with the two keel options always well balanced and easy to handle.

By this, performance meets the clients requirements at its best - stunning performance, easy to sail and tuned for the clients area.

An optimized and well thought deckslayout, a manual jib furler and a self-tacking jib in standard are completing an astonishing vessel.

Concept – Deckslayout



The new deckslayout features the Hanse easy sailing concept with all functions operable from the helm position with one set of winches only. The large saloon glass „windows“ next to the companion way are one of the key features of this deck design.

The cockpit combines comfort and safety. The halyard boxes, one cockpit locker in the port cockpit bench and two at the

transom keep the deck clean and give stowage for all equipment on board.

An anchor arm at the bow and the anchor locker make the anchoring manoeuvre easy at any time. Optional secondary winches on the coamings give the opportunity for more ambitious sailing and manoeuvring.

Concept – Deck hatches and Windows



Light and view below deck are essential and bring the focus to an extraordinary interior styling. Therefore the Hanse 418 can have overall 7 openable hatches on deck.

The central saloon glass window area is made out of a Size 70 openable flush hatch and a fixed screen. The enormous glass panels next to the glass companion way – with optional „in-glass“ hatches - and four coachroof and two hull

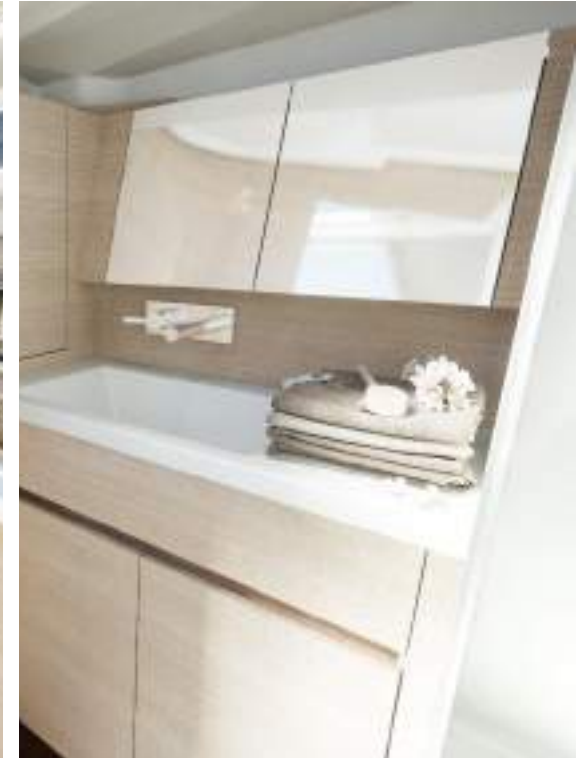
windows are completing the concept.

Two Size 70 hatches - one with an additional fixed screen - two small hatches on the coamings and two hull windows make the owner feel the comfort of his master cabin.

The aft coachroof windows, two hull windows and a cockpit side hatch are providing light to the aft cabins.

A hatch in the coachroof window allows ventilation of the portside head - available for the galley as well.

Concept – Furniture Design



With its innovative and modern furniture design, the Hanse 418 is an extraordinary yacht. Various wood options can be combined - next to the numerous upholstery choices - with upper cupboard fronts in „ Pearl“ or „Dove Grey“. The saloon upholstery is designed to achieve the impression of a settee with still the maximum of stowage below.

Wooden bulkheads, a washing basin in special Hanse Design

and a shower door in the head are just some of the features of the new Hanse 418.

The combination of various cabin layouts and the different choices ensure a modern and individual yacht.

Despite to the Hanse furniture Design all features and materials are in accordance to our „big boats“ with no difference in quality or materials.

Concept – Saloon



The Hanse 418 saloon offers a maximum of comfort and functionality. The settees on both sides can be connected into a huge dining area by the saloon table with its foldable tops. The marine galley can be ordered as short or long version depending on your aft cabin choice.

The head is equipped with the Hanse Design washing basin a toilet which is also a shower stall. The extractable port settee and the lowerable chart table make the saloon become a third or fourth cabin.

Concept – Master Cabin



The modern and stylish master cabin is featuring three cupboards – one at the bow and two aft. It offers a king size island birth of 1.60 x 2 m. Two huge drawers below the birth and upper copboards on the sides complete the enormous amount of stowage. It can be optional delivered with a V-birth and an ensuite head with toilet and shower as per the owners preference.

Concept – Aft Cabins



Two different aft cabin options, in combination with the long or short galley, allow to choose between a two or three cabin version boat. The beds are both 1.60 x 2m. By eliminating the cockpit locker, the port aft cabin became even more comfortable with additional upper lockers. For more stowage the stb aft cabin can turn into a huge locker.

Standards

Principle dimensions



LOA		12.40 m	40' 8"
Hull length		11.99 m	39' 4"
LWL		11.40 m	37' 5"
Beam		4.17 m	13' 8"
Draft			
	shallow keel	1.74 m	5' 9"
	L-keel, medium	2.10 m	6' 11"
Displacement			
	shallow keel	approx. 10.10 t	22.266 lbs
	L-keel, medium	approx. 9.80 t	21.605 lbs
Engine Diesel			
	standard	approx. 39.00 PS	39.00 hp
	option	approx. 57.00 PS	57.00 hp
Fuel tank		approx. 160 l	42 gal
Fresh water		approx. 475 l	125 gal
CE Certificate		A - 10	
	Design	judel / vrolijk & co	
	Interior	HanseYachts Design	
Mast length above WL		approx. 19.60 m	64' 4"
Total sail area		approx. 87.00 qm	936 sq ft
Main sail	standard	approx. 52.50 qm	565 sq ft
Self-tacking jib		approx. 34.50 qm	371 sq ft
Crossover		approx. 76.90 qm	828 sq ft
Gennaker		approx. 120.00 qm	1.292 sq ft

Standards

HULL

- 6 hull windows (3 each side)
- GRP hull, isophthalic gelcoat, colour: Signal White (RAL 9003), 1st layer vinyl ester resin with balsa sandwich core
- Waterline and cove line, isophthalic gelcoat, colour: Dark Grey (RAL 7043)

KEEL

- T-keel, cast iron, draft: 2.10 m

LAYOUT & INTERIOR

- A1: Master cabin with double V-berth, hanging locker and shelves
- B1: Saloon with large L-galley, dining area on stb and sofa on port
- separate head with shower stall on port (only with XL3001)
- C1: Aft cabin with double berth and storage on port, utility room on stb (only with XL2001)
- 2-burner gas stove, 12 V fridge approx. 130 l, waste bin, double stainless steel sink with mixing tab
- Interior furniture in high quality marine plywood, satin varnish
- Hanse companionway closing system
- Saloon table, folding with stowage
- Worktop in galley - Black Quartz

WOOD (FURNITURE, FLOORBOARD)

- Furniture - Mahogany Style, Satin Varnish
- Cupboard fronts in wood colour
- Floorboard - Acacia

UPHOLSTERY, CARPETS & CURTAINS

- Mattresses for all berths
- Upholstery - Monte Carlo, colour: Cream

DECK & OUTSIDE EQUIPMENT

- GRP deck with antislip surface, isophthalic gelcoat, colour: Signal White (RAL 9003), 1st layer vinyl ester resin with balsa sandwich core.
- 1 cockpit locker on stb, stern locker on port and stb, stowage for running rigging at helm position, anchor locker at bow
- Teak on cockpit benches
- Twin wheel steering system with emergency tiller
- 2 stainless steel steering wheels with leather cover
- Cockpit table, stainless steel with folding teak tops
- Pulpit and pushpit, stainless steel

- Railing, incl. stanchions and stainless steel wire
- Covered halyards and control lines lead to cockpit helmposition, organizers and jammers, 4 mooring cleats, handrail on coachroof, bow anchor fitting with step
- 2 LEWMAR 45 ST EVO manual halyard winches
- Swimming ladder
- Self tacking jib system
- Mainsheet system
- 2 deck hatches - openable, anchor locker hatch, stowage on coach roof with acrylic glass hatch
- 6 deck coach roof windows with openable portlight in bathroom, glass next to companionway, glass in saloon and master cabin portlight in cockpit side for aft-cabin port

RIG & SAILS

- Rig, anodized aluminium, deck stepped, with kicker, standing and running rigging and 2 reefs
- ELVSTRÖM Dacron sails - full battened, main and jib

NAVIGATION & INSTRUMENTS

- Illuminated compass
- Navigation lights - LED

PROPULSION

- Fuel tank, approx. 160 l
- Engine (Diesel, approx. 39 hp) - saildrive, 2-blade fix propeller

EQUIPMENT

- 12 V and 230 V electric system with 230 V shore power and sockets in cabins and heads
- AGM battery set, capacity: 1x 90 Ah + 1x 160 Ah AGM
- Country Version: EU / AUS
- Battery charger 35 A
- Manual toilet with sea water flush (B layout)
- Manual toilet with sea water flush (A layout)
- Shower unit in cockpit, warm-/coldwater
- LPG gas system, 1 bottle in stowage
- Blackwater system (appr. 65 l) with deck extraction and seacock for head, electric and manual bilge pump
- Freshwater system with electric pump and 20 l hotwater, heated by main engine

- Fresh water tank, appr. 320 l
- Add. freshwater tank, appr. 200 l

ACCESSORIES

- Mast steps

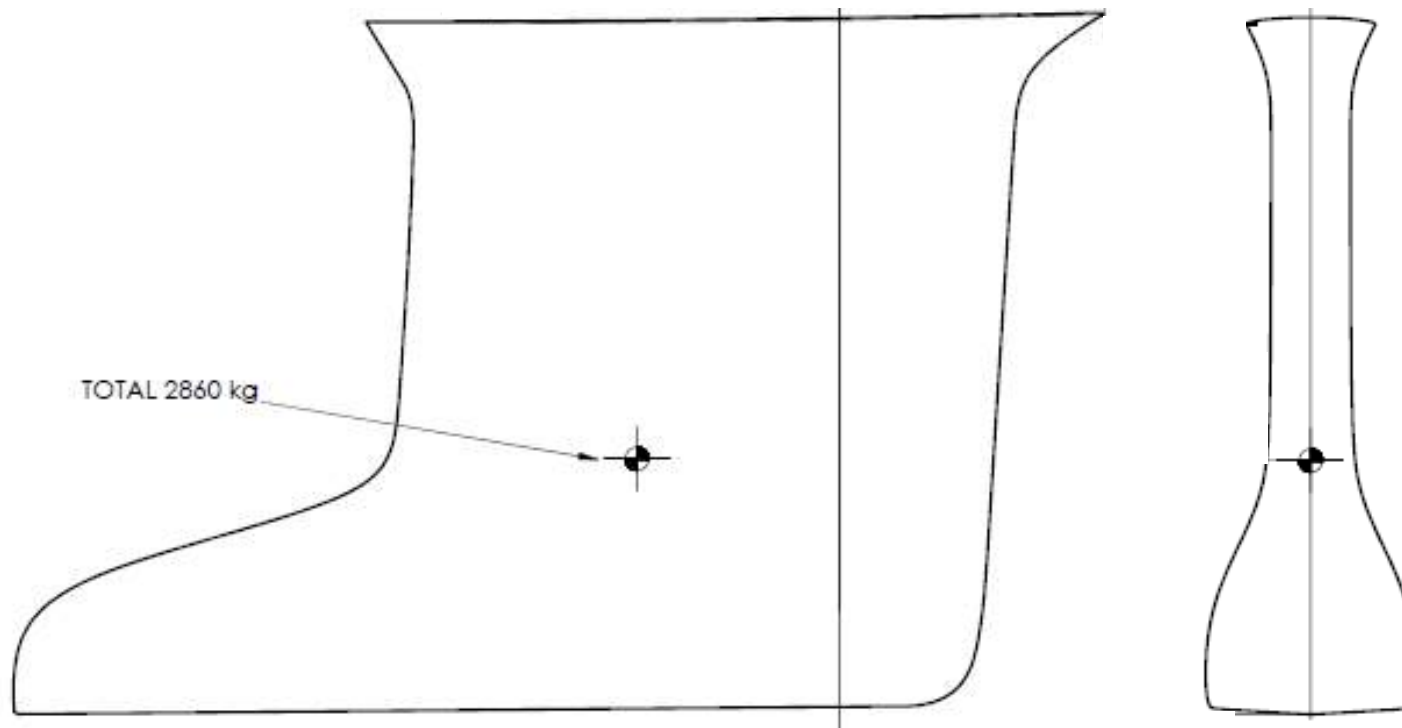
SHIPPING & TRANSPORT

- CE - Certificate cat. A - 10
- Owners manual
- EC - Type Examination Certificate

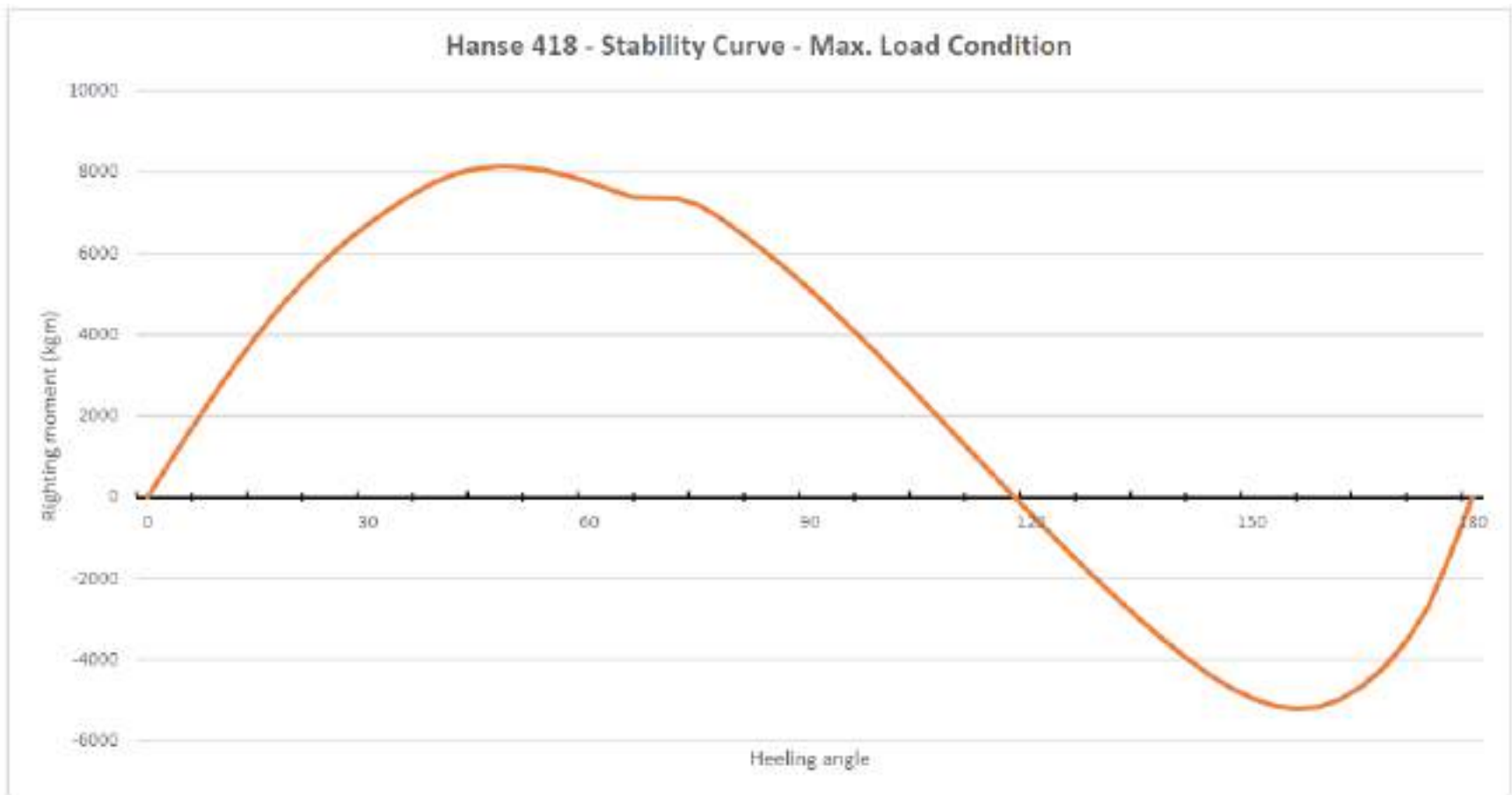
B – Keel: Medium Draft

XB1002 L-keel, cast iron, draft: 2.10 m

Draft	2.10 m	6' 11"
Ballast	2.86 t	6.305 lbs
Dspl.	9.80 t	21.605 lbs

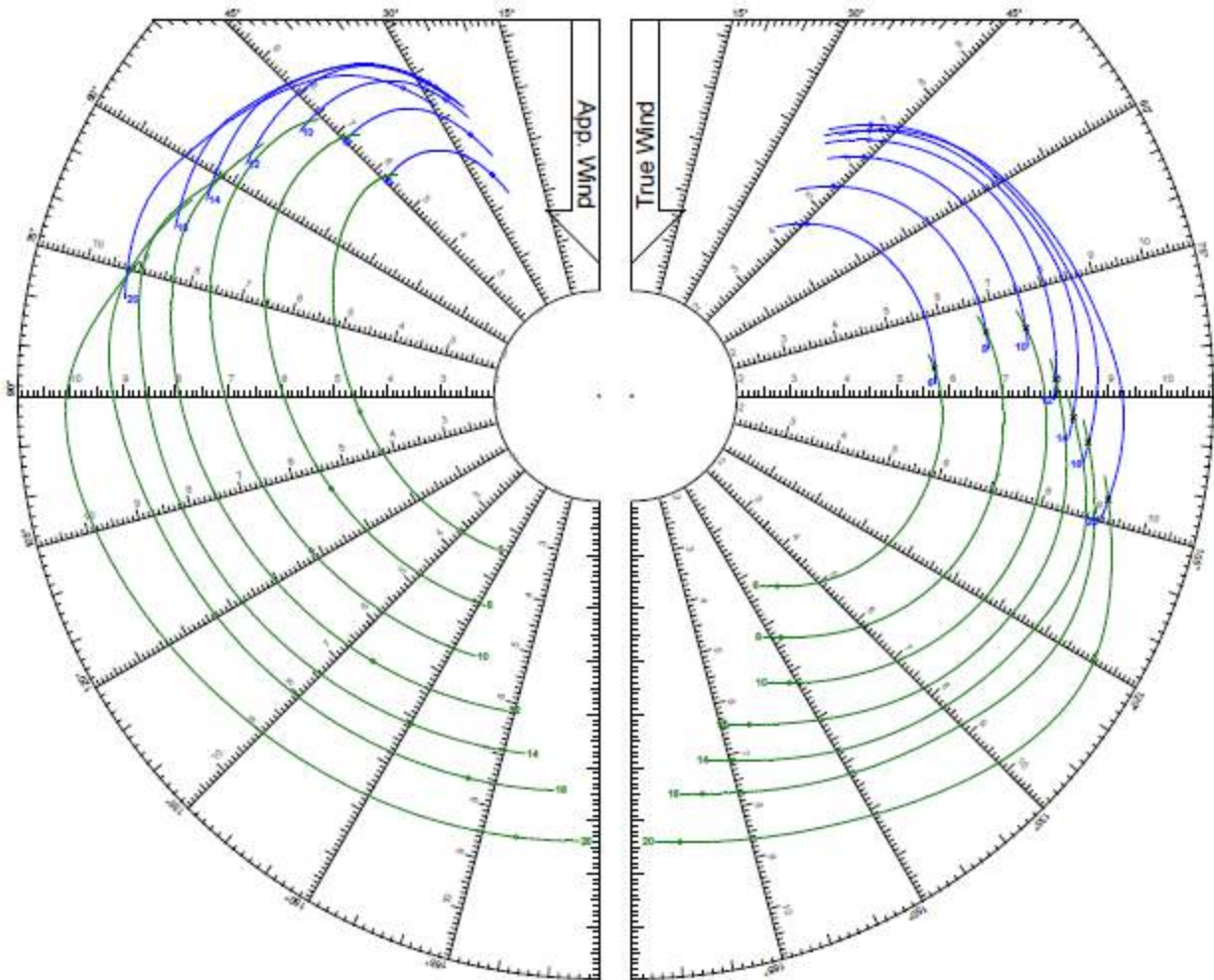


Medium Draft Keel - Stability



Medium Draft Keel – VPP

Self-tacking jib upwind and gennaker downwind

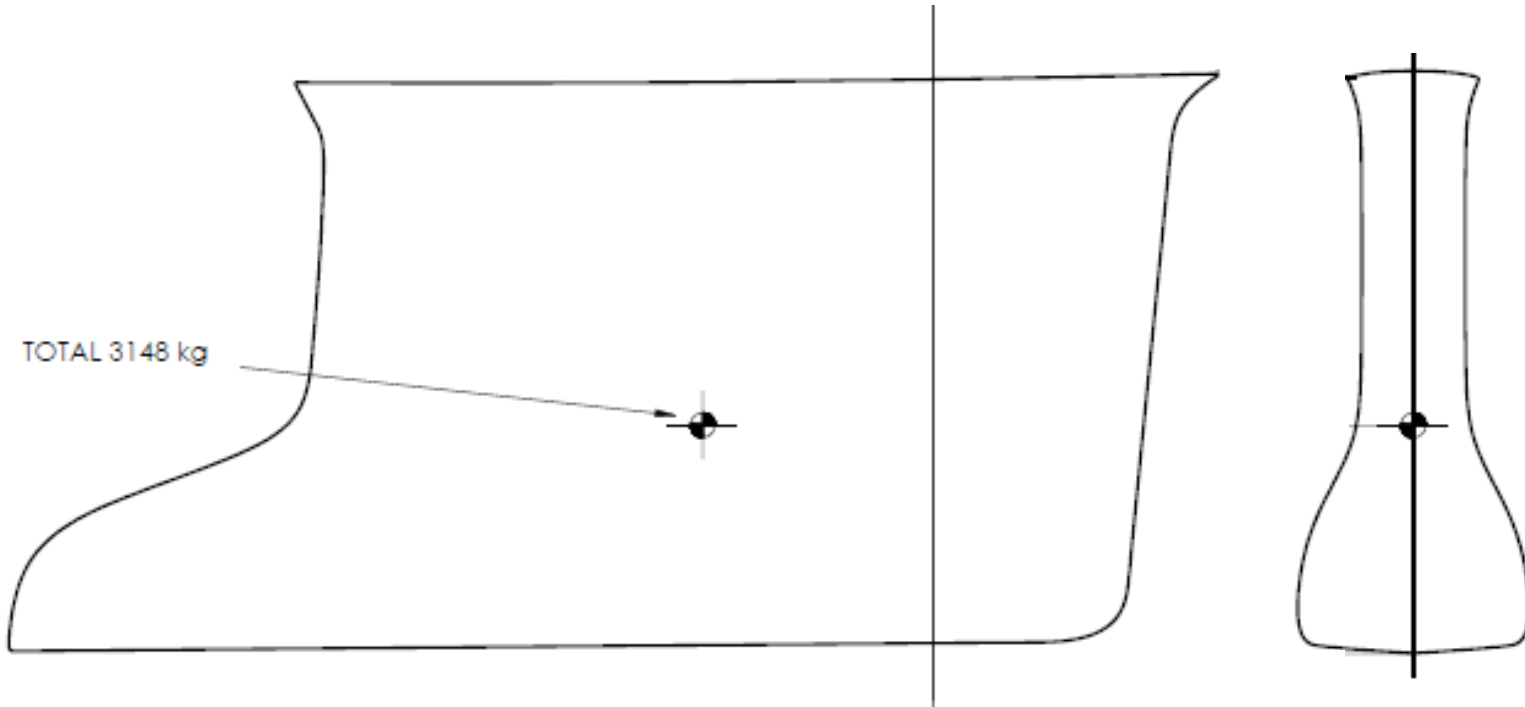


Options

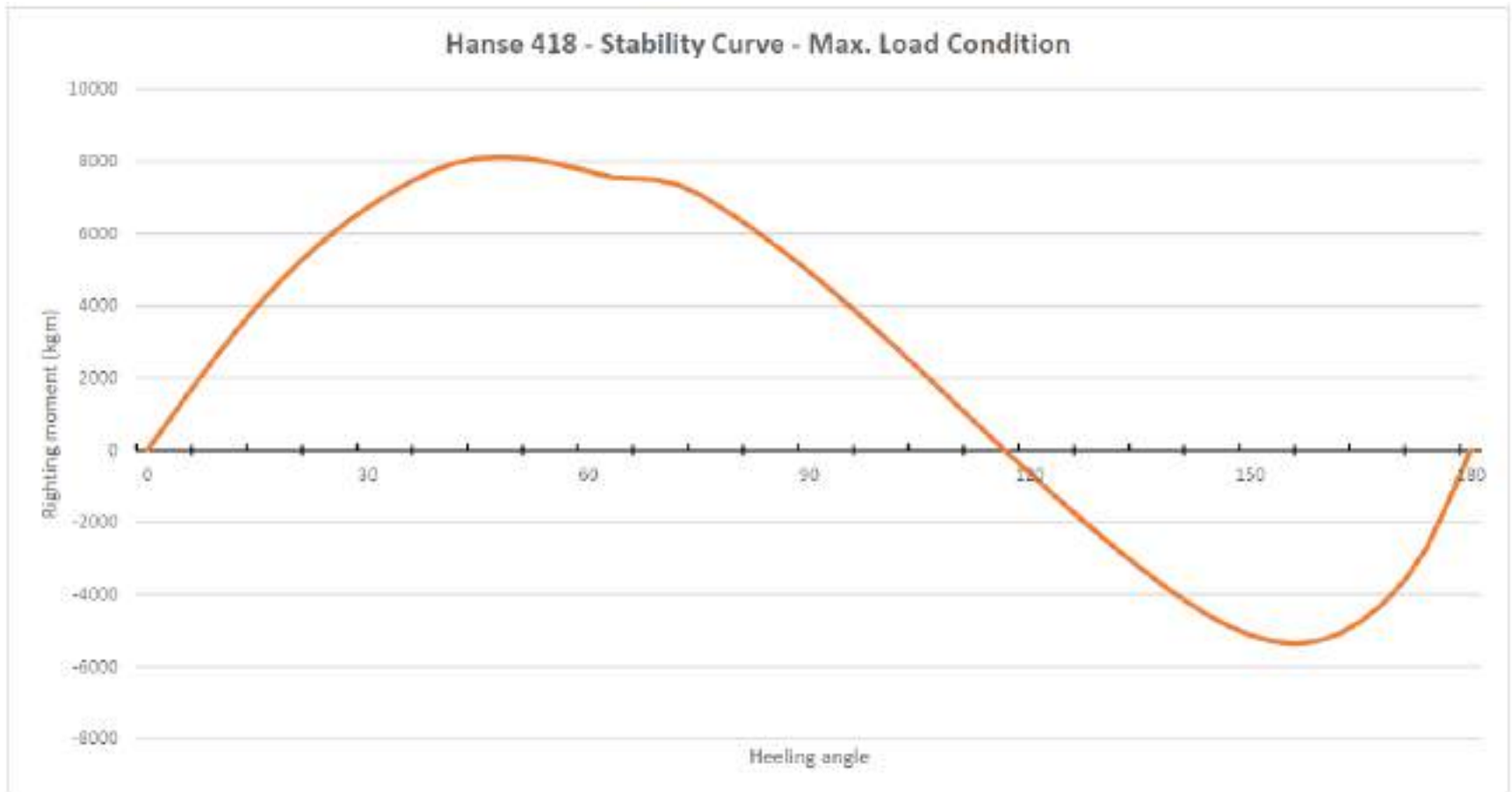
B – Keel: Shallow Draft Keel

XB1001 L-keel, cast iron, draft: 1.72 m

Draft	1.74 m	5' 9"
Ballast	3.15 t	6.945 lbs
Dspl.	10.10 t	22.266 lbs

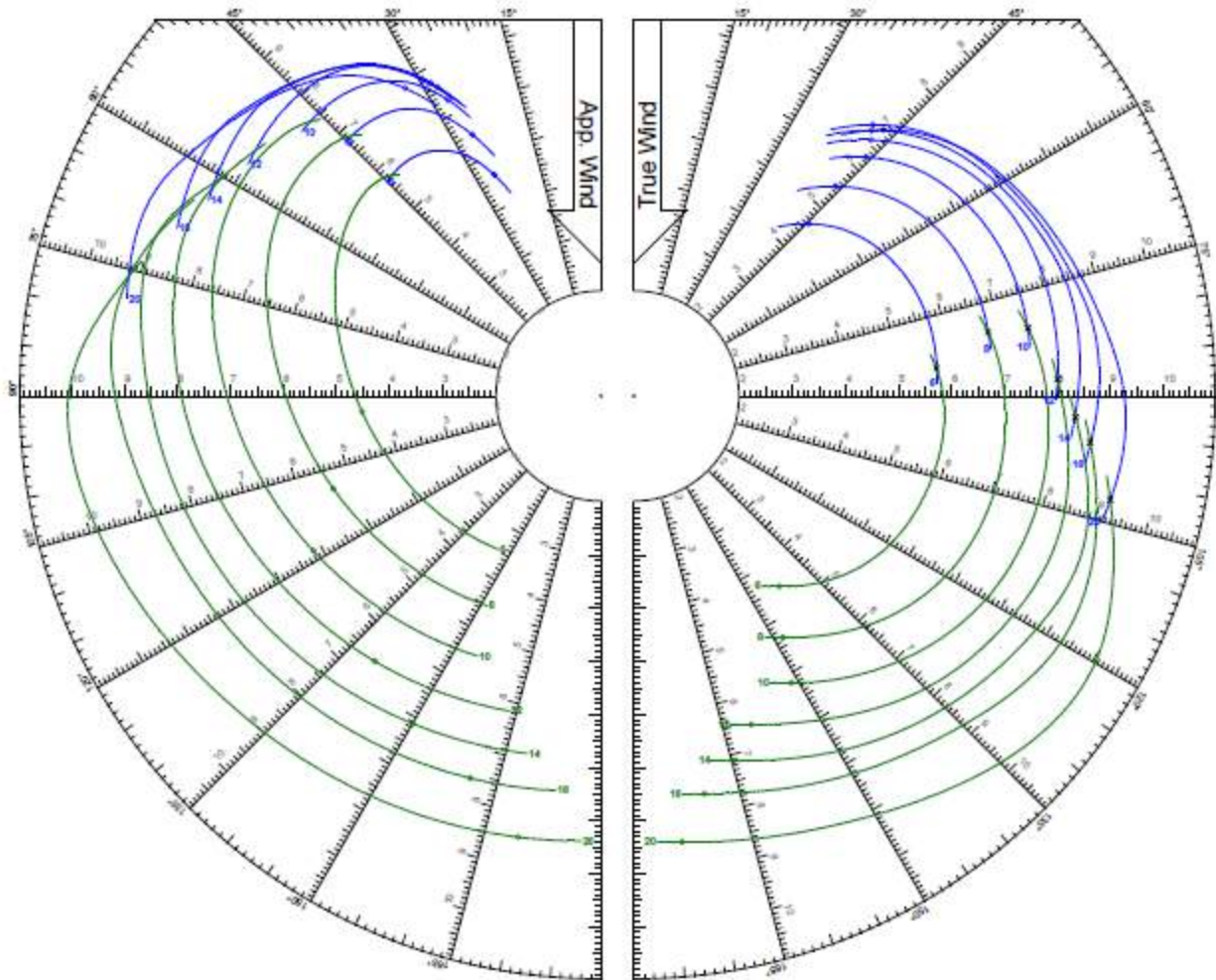


Shallow Draft Keel - Stability



Shallow Draft Keel – VPP

Self-tacking jib upwind and gennaker downwind



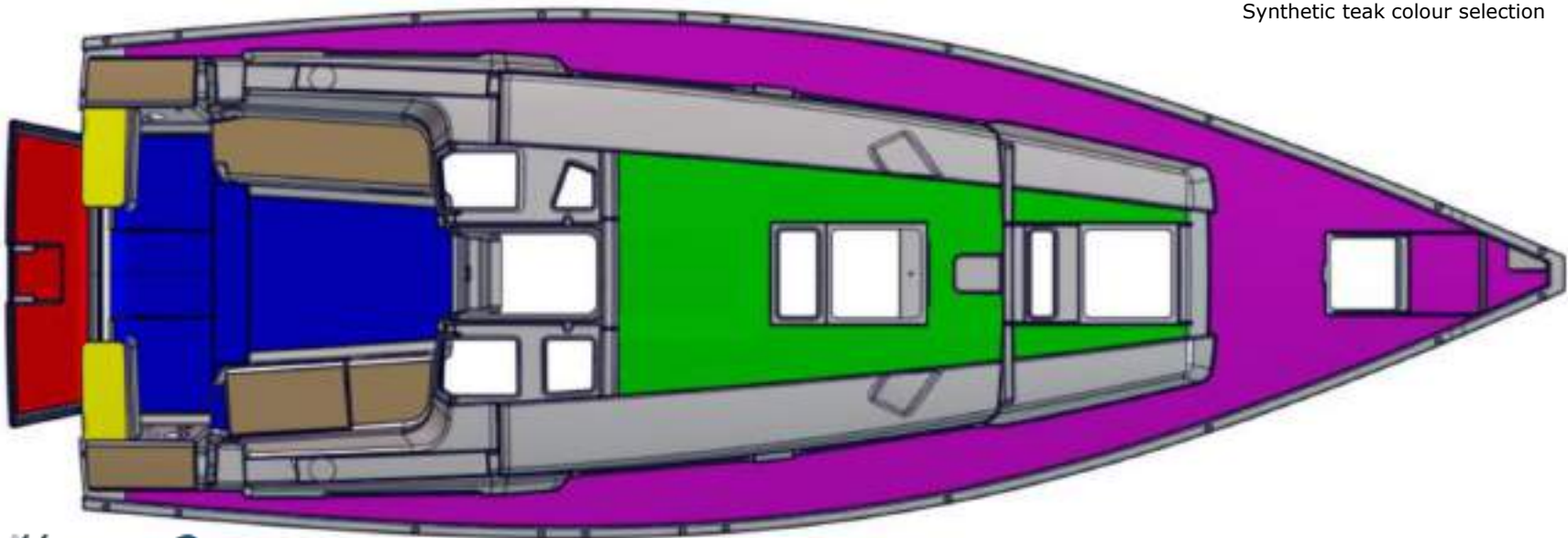
C – Deck & outside equipment

Teak / synthetic teak

- XC1300 / XC1301 Side deck
- XC1310 / XC1311 Coachroof
- XC1325 / XC1326 Cockpit bottom
- XC1333 / XC1334 Helmsman seat
- XC1340 / XC1341 Cockpit benches
- XC1350 / XC1351 Bathing platform



Synthetic teak colour selection



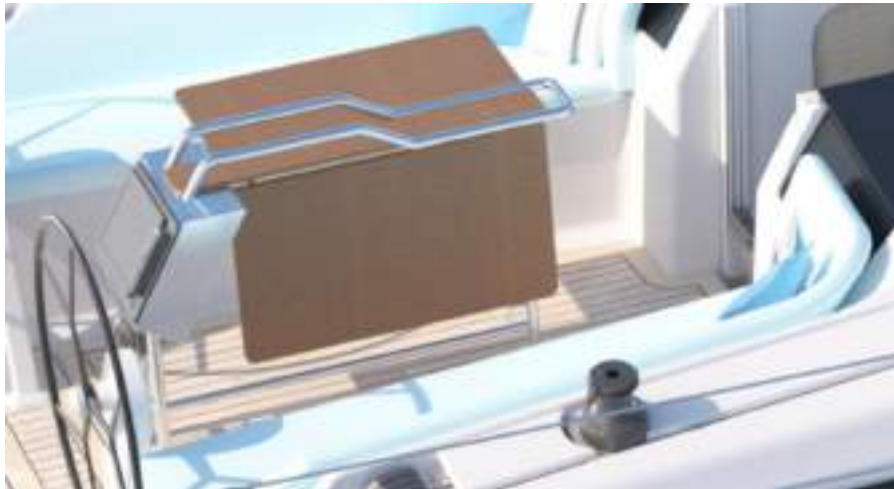
C – Deck & outside equipment

XC3001 Cockpit table, stainless steel with folding teak tops

XC3003 Cockpit table with stowage and optional fridge

XF4010 B&G Zeus³ 9" chart plotter at cockpit table

XF4011 B&G Zeus³ 12" chart plotter at cockpit table



C – Deck & outside equipment

XC6000 Bathing platform, manual fold-out with swimming ladder (only with XC1350 or XC1351)

XC6001 Bathing platform, manual fold-out with swimming stairs (only with XC1350 or XC1351)

XC1350 Teak on bathing platform

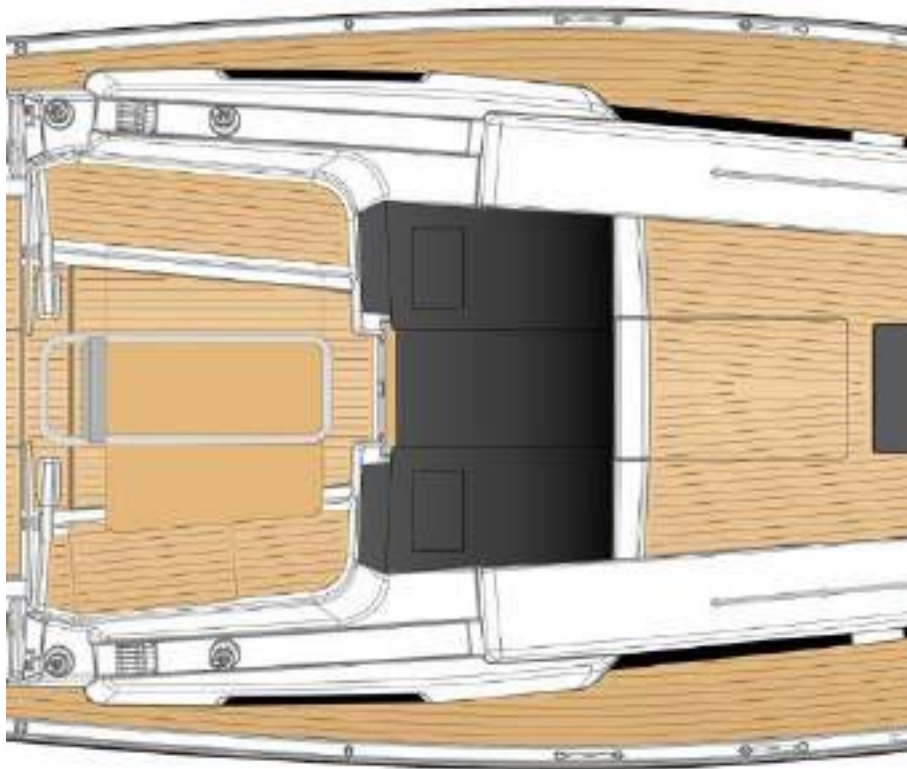
XC1351 Synthetic teak on bathing platform



Picture schematic from H548

C – Deck & outside equipment

XC9421 Portlight in coach roof window stb and 2 hatches in deckwindows next to companion-way

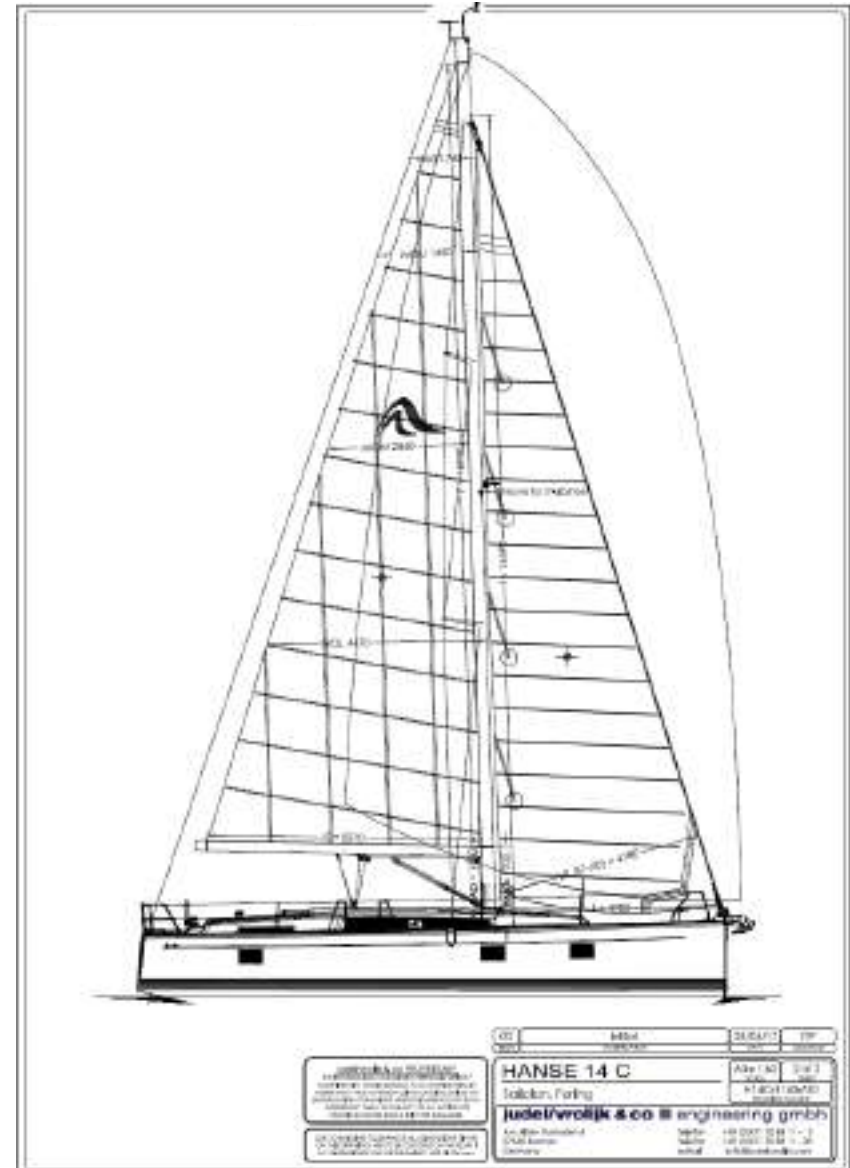


E – Rig & sails: Sail Plan

Furling Rig

XE1001 Rig, anodized aluminium with manual inmast furling system

Total sail area	79.50 m²	856 sq ft
Mainsail	45.00 m²	484 sq ft
Jib	34.50 m²	371 sq ft
Crossover	76.90 m²	828 sq ft
Gennaker	120.00 m²	1.292 sq ft
E	5.57 m	18' 3"
P	16.17 m	53' 1"
J	4.70 m	15' 5"
IG	16.59 m	54' 5"
Mast length above WL	19.60 m	64' 4"



F – Navigation & Instruments

B&G Instrument range



Triton² Multifunction display



Zeus³ chartplotter 12"



Zeus³ chartplotter 9"



Triton² Autopilot controller



4G Broadband radar



H50 wireless handset



V50 VHF

H – Propulsion

XG1000 Engine (Diesel, approx. 39 hp) - saildrive, 2-blade fix propeller

XG1001 Engine (Diesel, approx. 39 hp) - saildrive, 2-blade folding propeller

XG1103 Engine (Diesel, approx. 57 hp) - saildrive, 3-blade folding propeller



XG3101 Bowthruster, 12 V, retractable, incl. battery



K – Radio & entertainment

XK1000 FUSION MS-RA205 Multimedia radio with bluetooth - for saloon and cockpit



XK1001 FUSION MS-AV750 Multimedia radio with bluetooth and CD/DVD player - for saloon and cockpit



XK3000 FUSION MS-NRX remote control in cockpit



XK5030 FUSION wireless link - remote control via mobile devices

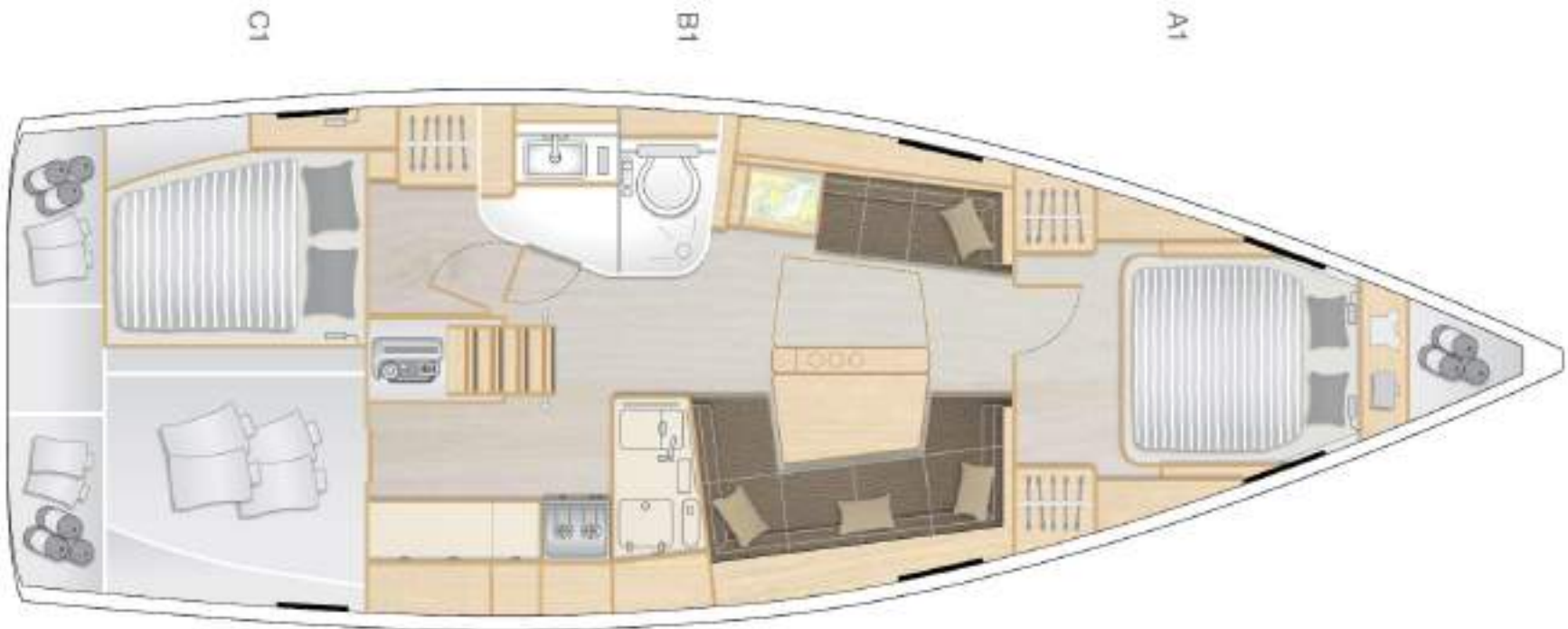


L – Layout & interior

XL1001 A1: Master cabin with double V-berth, hanging locker and shelves

XL2001 B1: Saloon with large L-galley, dining area on stb and sofa on port - separate head with shower stall on port (only with XL3001)

XL3001 C1: Aft cabin with double berth and storage on port, utility room on stb (only with XL2001)



L – Layout & interior

XL1002 A2: Master cabin with separate head, double V-berth, hanging locker and shelves



L – Layout & interior

XL2002 B2: Saloon with short L-galley, dining area on stb and sofa on port - separate head with shower stall on port (only with XL3002)

XL3002 C2: 2 aft cabins with double berth and storage (only with XL2002)

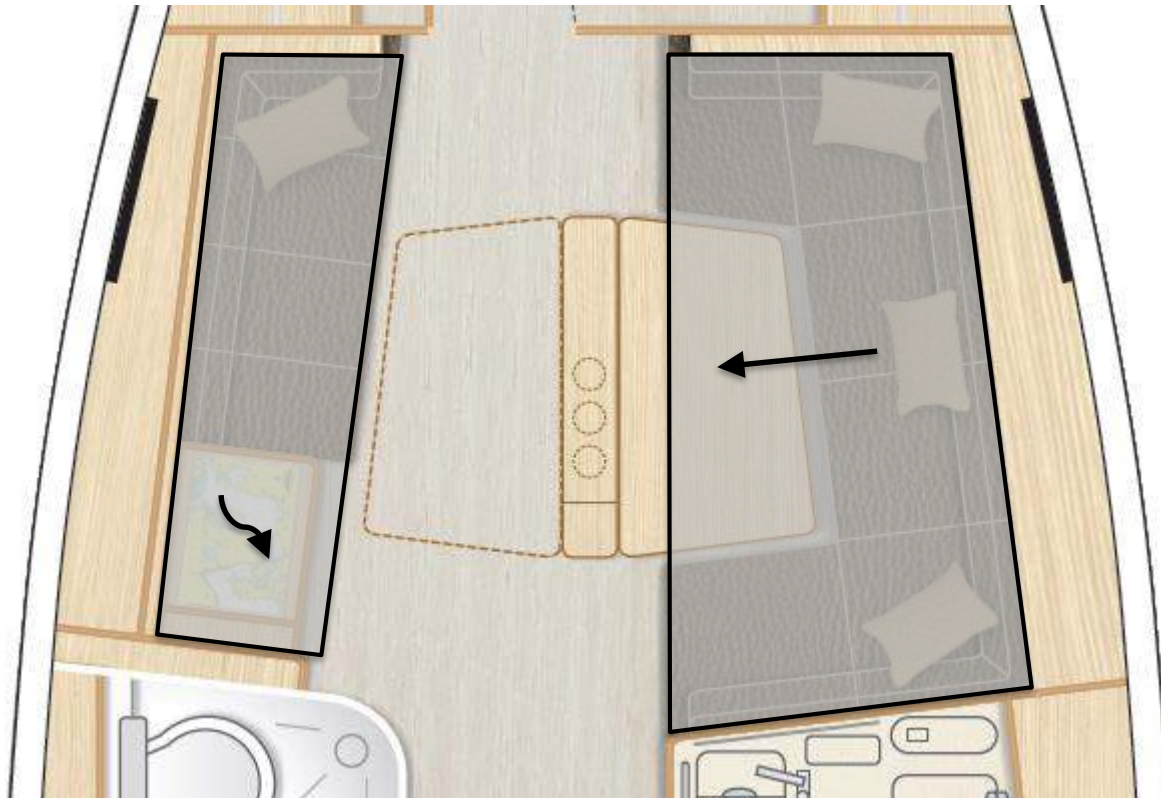


L – Layout & interior



L – Layout & interior

XL7200 Chart table lowerable and seating area in saloon convertible into double berth

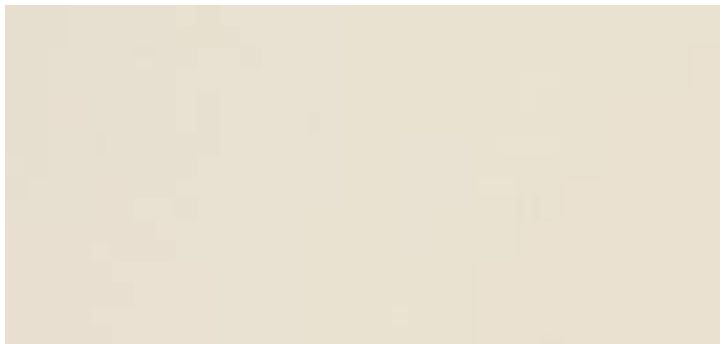


L – Layout & interior

XL7600 Worktop in galley - Black Quartz



XWorktop in galley - Seashell White



M – Wood

XM1100 Furniture - Mahogany Style, Satin Varnish



XM1101 Furniture – Canadian Chestnut, Satin Varnish



XM1104 Furniture – French Oak, Satin Varnish



XM1161 Cupboard fronts coloured (partial as per design - colour selection)



Pearl Grey



Dove Grey

M – Wood

XM1200 Floorboard – Acacia



XM1203 Floorboard – Delight Oak



XM1201 Floorboard - Classic Stripes



XM1202 Floorboard - Noce Nero



Packages

W – Packages

for package contents please refer to the actual pricelist

XW2000 B&G Navigation Package (only with XC3001 or XC3003)

XW2001 Upgrade - 12" chart plotter

XW3000 Cruising Package

XW3001 Upgrade - Synthetic Teak

XW3002 Upgrade - Stainless steel anchor with chain

XW4000 Performance Package

XW4100 Gennaker Package

XW5000 Comfort Package

XW7000 Entertainment Package

XW7001 Upgrade - Premium Radio

XW7005 TV Package - Saloon

Competition

Competition

	Hanse	Bavaria		Beneteau	Jeanneau	Dufour	Sirena	X-Yachts	Solaris
	Hanse 418	Cruiser 41	Vision 42	Oceanis 41.1	Sun Odyssey 419	Grand large 412	Azuree 41	Xc42	Solaris 42
Length over all	12,41 m	12,35 m	12,80 m	12,43 m	12,76 m	12,70 m	12,50 m	12,81 m	12,36 m
Length Hull	11,99 m	11,99 m	12,50 m	11,98 m	11,99 m	11,98 m	-	11,47 m	-
Beam	4,17 m	3,96 m	4,05 m	4,20 m	3,99 m	4,20 m	3,94 m	4,10 m	3,99 m
Displacement (empty)	9,8 t	8,68 t	9,80 t	7,84 t	7,86 t	8,94 t	8,36 t	11,4 t	8,8 t
Sail area total	87 m ²	82 m ²	88 m ²	84 m ²	76 m ²	71 m ²	100 m²	89,80 m ²	100 m²
Main	52,50 m ²	48,00 m ²	50,00 m ²	40,00 m ²		38,00 m ²	55,80 m ²	53,00 m ²	58,00 m²
Jib (selftacking)	34,50 m ²	34,00 m ²	38,00 m ²	42,00 m ²		33,00 m ²	44,20 m²	36,80 m ²	42,00 m ²
Standard engine	39 HP	29 HP	40 HP	45 HP	45 HP	40 HP	39 HP	54 HP	40 HP
Standard Price (ex. VAT - 12/16)	145.900,- €	139.500,- €	147.500,- €	145.700,- €	154.600,- €	154.460,- €	202.000,- €	n/a	n/a